



Marine Protected Area (MPA) Watch Regional Report

Los Angeles Mainland – Los Angeles Waterkeeper's Boat-Based Survey Report
January 2020 – June 2020



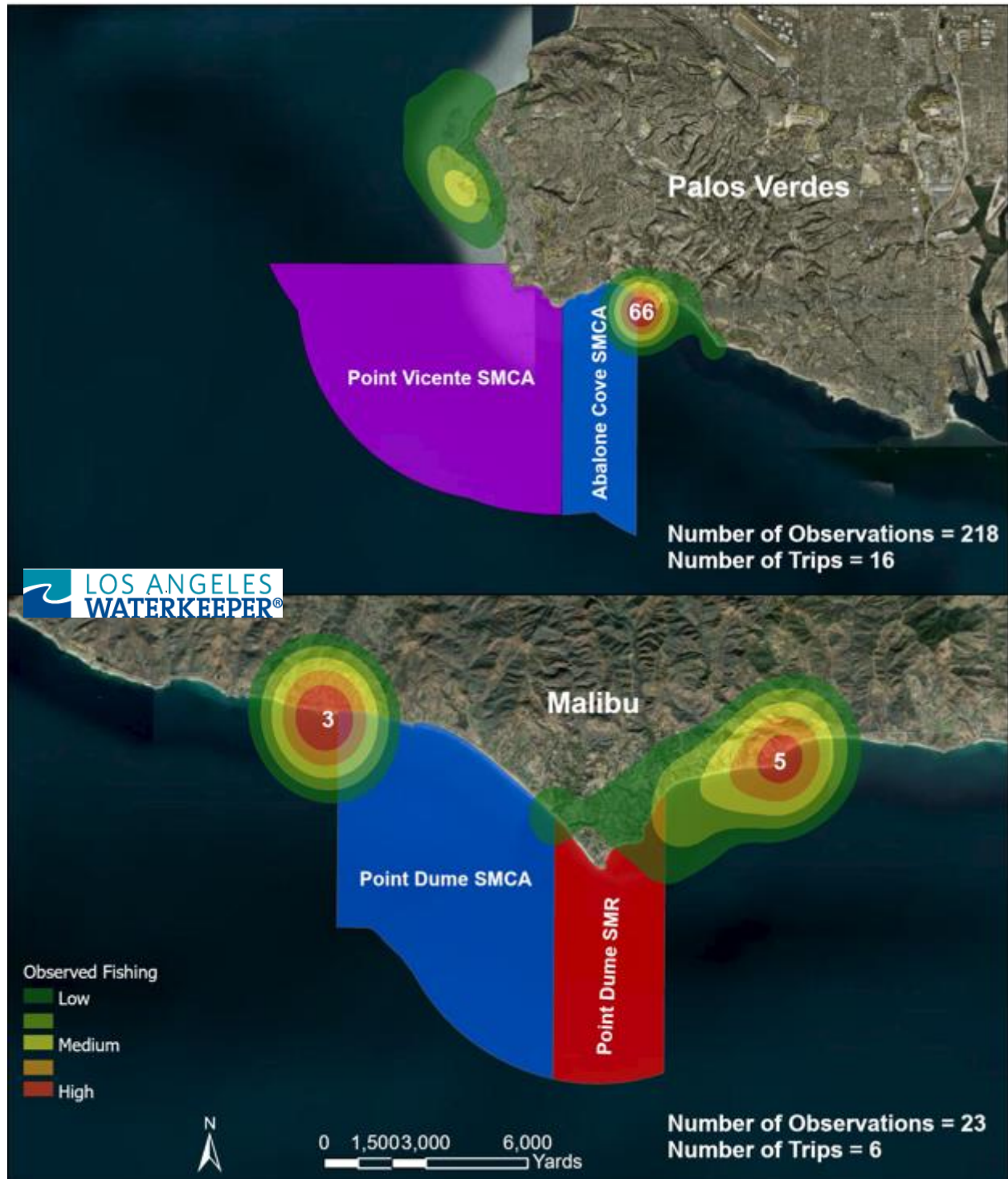
Los Angeles Waterkeeper (LAW) has conducted 60-65 boat-based surveys of mainland Los Angeles County MPA's on a weekly basis since 2012. LAW's boat-based data focuses on all boating activity, consumptive or non-consumptive as well as all onshore fishing/consumptive activity inside the MPA boundaries and in their surrounding control sites.

LAW's transects cover the entire MPAs as well as control sites 2 miles up and down shore of each of the MPA boundaries. LAW's efforts complement the LA County mainland land-based surveys conducted by Heal the Bay. LAW's Marine Programs Director Michael Quill operates the Waterkeeper vessel and oversees every LAW boat-based survey.

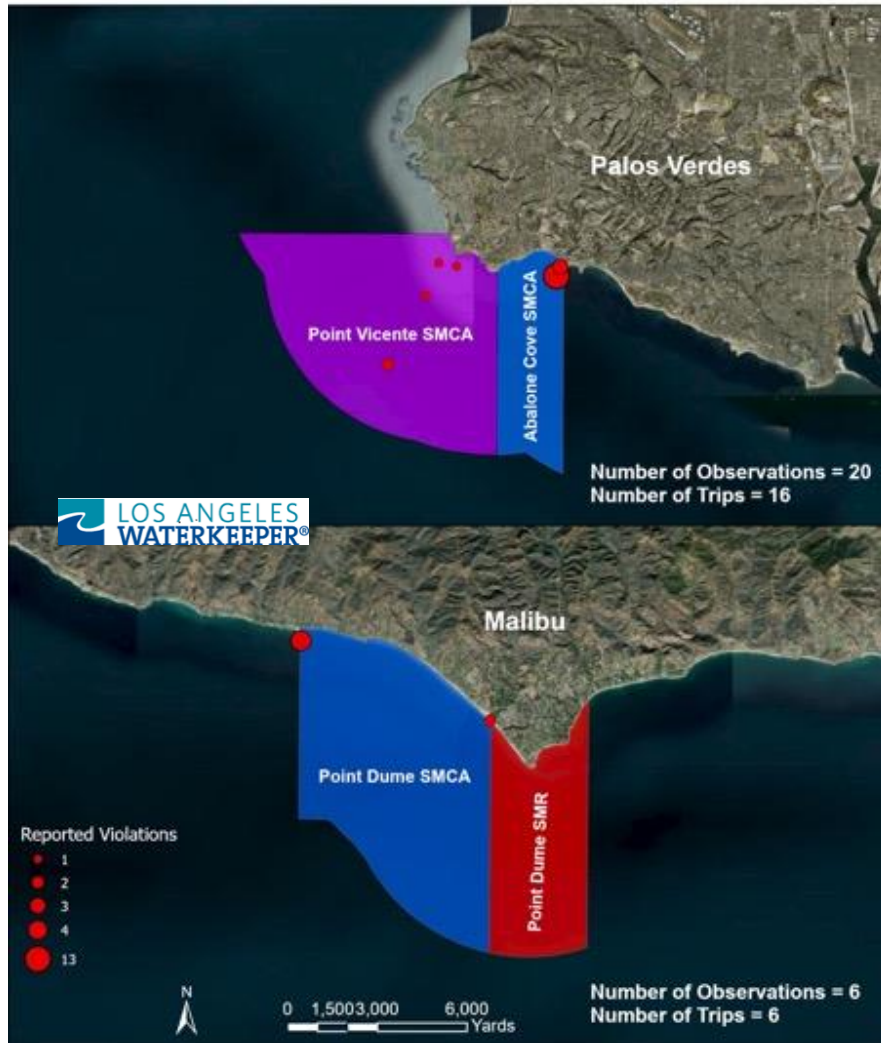
Executive Summary

- Actual transect run times are approximately 2.5 hours depending on density of activity observed
- LAW completed 22 mainland boat-based surveys over the first 6 months of 2020 despite the COVID-19 limitations
- LAW is on track to complete 60 boat-based surveys in 2020
- All observations of potential violations are reported to CalTip from the water at the time of observance via cell phone
- Quill follows up with friendly outreach to all boaters observed in the process of fishing illegally in MPAs after those fisher's give permission to approach and receive on the water MPA outreach
- 22 mainland LA boat-based surveys January – June 2020
- COVID-19 interrupted March 7 – May 7 2020.

Jan - June 2020 All Fishing Activity Palos Verdes and Malibu



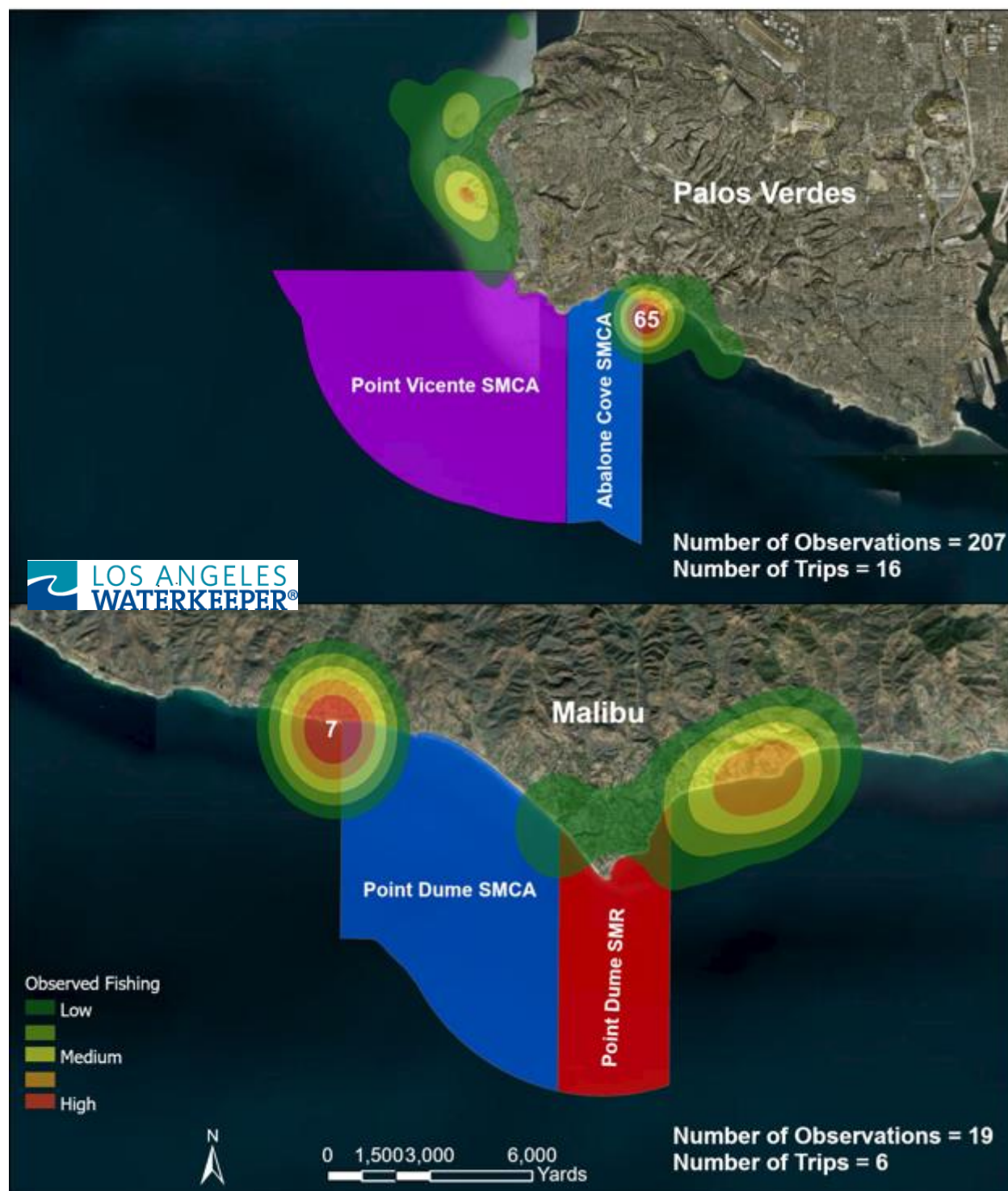
Jan - June 2020 Reported Violations Palos Verdes and Malibu



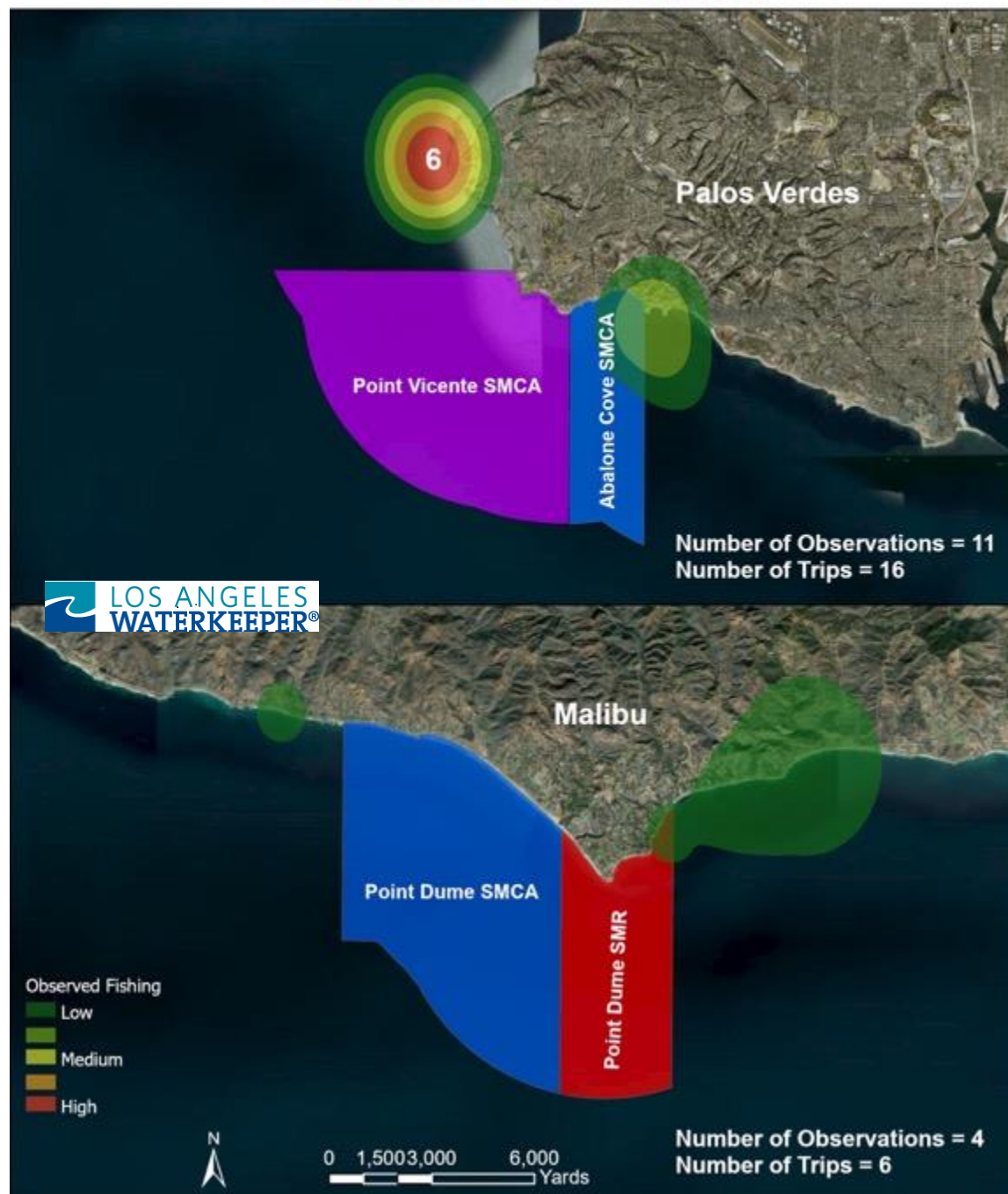
LAW's Jan – June 2020 Potential Violations Reported

Transect	Date	Start	End	Obs.Time	Latitude	Longitude	Vessel Type	Vessel	Activity	Quantity	Notes	Violation
Point Vicente SMCA Boating	2/8/2020	11:19	13:19	12:31	33.73870316	-118.4161257	Recreational	Sport Fishing Boat	Fishing	1	Rod and Reel & pulled up a Lobster Trap. CalTip Called, Made Contact- Provided MPA Guides & Info	V
Point Dume SMCA Boating	2/15/2020	11:22	13:30	13:26	34.03475443	-118.8830688	Recreational	On Shore - Rocky	Fishing	4	CalTip Called	V
Abalone Cove SMCA Boating	5/26/2020	10:51	11:52	11:47	33.73795145	-118.3758908	Recreational	On Shore - Sandy	Fishing	2	CalTip Called	V
Point Dume SMR Boating	5/26/2020	13:17	14:50	13:28	34.0189146	-118.8182945	Recreational	On Shore - Sandy	Fishing	2	CalTip Called	V
Point Vicente SMCA Boating	6/12/2020	11:22	13:22	12:37	33.72970268	-118.4204208	Recreational	Sport Fishing Boat	Fishing	1	CalTip Called, Made Contact - Provided MPA Guides & Info	V
Point Vicente SMCA Boating	6/12/2020	11:22	13:22	12:44	33.71066219	-118.4326704	Recreational	Jet Ski	Fishing	2	CalTip Called, Made Contact - Provided MPA Guides & Info	V
Point Vicente SMCA Boating	6/24/2020	10:52	12:00	12:05	33.73785751	-118.4102221	Recreational	Power Boat	Fishing	1	CalTip Called, Made Contact - Provided MPA Guides & Info	V
Abalone Cove SMCA Boating	6/26/2020	10:38	12:02	11:39	33.7377533	-118.3760338	Recreational	On Shore - Rocky	Fishing	3	Observed tide pool take by several groups - by hand and bucket. CalTip Called 0 dispatch reported they had received several calls prior to our call. Quill also called RPV Ranger	V
Abalone Cove SMCA Boating	6/26/2020	10:38	12:02	11:40	33.73519441	-118.3773263	Recreational	On Shore - Rocky	Fishing	13	Observed tide pool take by several groups - by hand and bucket. CalTip Called 0 dispatch reported they had received several calls prior to our call. Quill also called RPV Ranger	V

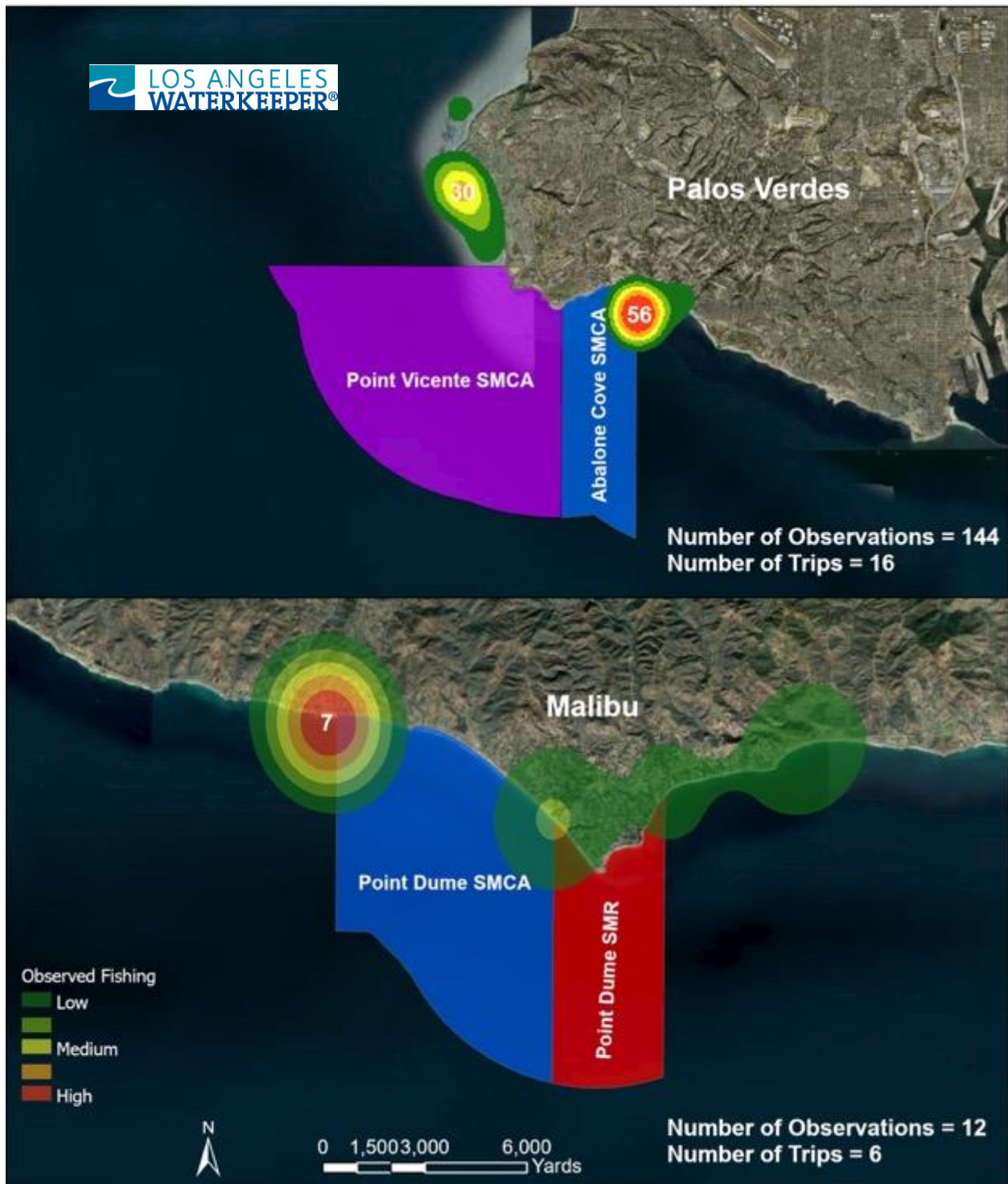
Jan - June 2020 Recreational Fishing Activity Palos Verdes and Malibu



Jan - June 2020 Commercial Fishing Activity Palos Verdes and Malibu



Jan - June 2020 Onshore Fishing Activity Palos Verdes and Malibu



LAW'S MPA WATCH BOAT BASED SURVEYS



MPA Watch Boat Based Surveys conducted from the LA Waterkeeper vessel focus on boating and fishing activity in and around the Point Dume and Point Vicente/Abalone Cove, Los Angeles County Mainland MPAs at this time. Google Earth and GIS Mappings are produced. Collected information helps inform CA DFW staff and future scientific studies on MPA activities. Waterkeeper conducts 60-65 surveys a year, split between the two mainland MPAs.

MPA Watch Boat Crew Positions - 5 Volunteer Spots Available Each Trip

1. Boat Operator – Quill - LAW Staff
2. Spotter – Binoculars – (not shown)
3. Distance Finder Operator
4. Photographer
5. Data Scribe
6. IPAD - GPS Unit Operator

Transect Start and End Points

Surveys begin and end two miles past either side of the MPA boundaries.

Boat speed during transect

Transects are run at a speed of approximately 10 knots and roughly a half-mile off shore with frequent stops to collect data points.

Data Collection

All boating activity and all onshore fishing observed, inside or outside the MPAs, while traveling a transect are documented.

Waterkeeper stays at a safe, unobtrusive distance from the observed vessels, moving to position the observed on a heading of directly North, South, East, or West from the Waterkeeper.

For Each Vessel or Onshore Fishers:

1. The time of sighting is documented.
2. Waterkeeper's GPS position is documented.
3. The compass heading of the observed from the Waterkeeper is documented.
4. The distance of the observed from the Waterkeeper is documented.
5. Vessel type or onshore fishing method is documented.
6. Quantity of observed vessels or fishers onshore is documented.
7. Two Photos are taken of the vessel or fishers.
8. Any additional notes and comments are documented.

If fishers are violating MPA Regulations from a vessel or onshore, CADFW's CalTip is called and a report is filed. That CalTip action is also documented.

On The Water Outreach and Education

LA Waterkeeper views fisher's fishing from vessels positioned on the MPA boundary, and within MPA boundaries, as potential on the water outreach opportunities. After collecting data from a safe distance, and on a case by case basis, Waterkeeper may approach those vessels slowly and safely. As part of our good neighbor outreach and education approach, Waterkeeper asks permission to approach closer and if granted that permission to approach, conducts on the water outreach and education providing boaters and fishers with printed CADFW approved materials providing maps, MPA regulations, and first-hand on-the-water and enforcement information and guidance to areas where fishing is permitted. Waterkeeper will always safely approach and inform boaters, fishermen, and other fellow watermen about MPA boundaries and MPA regulations if and when permission to approach is granted while on the water.

Los Angeles Waterkeeper's MPA Watch Boat – Based Surveys



Thank you to the funders who keep the Waterkeeper on the water!



RESOURCES LEGACY FUND®
CREATIVE SOLUTIONS. LASTING RESULTS.



Coastal
Conservancy



OCEAN
PROTECTION
COUNCIL



EDISON
INTERNATIONAL®
Energy for What's Ahead™

The Kenneth T. and Eileen L.
NORRIS
FOUNDATION



patagonia®



Thank you to LAW volunteer crew members who get it done!



LAW provides MPA outreach materials to fuel docks onshore
and fishers on the water!



As soon as the COVID-19 pandemic subsides and social distancing restrictions are lifted, we'll be crewing up the Waterkeeper again with volunteers!
mquill@lawaterkeeper.org

Join Us on the Waterkeeper Boat for a MPA Watch Trip!



What is a MPA?

A Marine Protected Area (MPA) is an area of the ocean where consumptive human activities such as fishing are limited or restricted in order to protect or conserve marine life or habitats.

On land, we have National Parks, National Forests, Reserves, etc. Marine Protected Areas provide similar protection to small areas in the ocean.

The main purpose of MPA Watch is to conduct outreach to local fisherman, boaters, and watersports enthusiasts about the new boundaries and restrictions and to gather data on the trends of boating and fishing in and around the Los Angeles County Marine Protected Areas.

Waterkeeper's MPA Watch Trips run about 4-5 hours. We travel from Marina Del Rey to the Point Vicente and Abalone Cove MPAs in Palos Verdes or to the Point Dume MPAs in Malibu.

MPA Watch Boat Trips are scheduled on our Calendar at www.LAWaterkeeper.org/mpa-watch.



Contact Michael Quill: mquill@lawaterkeeper.org (310) 394-6162, ext. 113 – If you'd like to join our MPA Watch Crew.





A special thank you to LAW Watershed Programs Manager Melissa von Mayrhauser who has been volunteering on her day off to join our MPA Watch crew since joining LAW in 2016 and up to her departure in August of 2020!

Thanks again, Melissa! Best of luck on your PhD pursuits!

Additional Information

For additional information on MPA Watch, including survey sites, participating organizations, protocols and datasheets, media kit, and how to get involved, please visit mpawatch.org. Connect with MPA Watch on social media @MPAWatchOrg.

For additional information regarding MPAs and regulations specific to the various classifications of MPAs please visit wildlife.ca.gov/MPAs. If you see an activity that violates MPA regulations, please call CalTip to report the violation at (888)-334-2258.