



## Marine Protected Area (MPA) Watch 2020 Regional Report

Los Angeles Waterkeeper's Boat-Based Survey Report  
Los Angeles County Mainland –  
January 2020 – December 2020



Los Angeles Waterkeeper (LAW) has conducted boat-based surveys of boating and fishing activities in and around the 2 mainland LA County MPA's on a weekly basis since 2012.

LAW's boat-based data focuses specifically on all consumptive and non-consumptive boating activity taking place as well as all on and in-the-water fishing, as well as all onshore fishing inside the MPA boundaries and in the surrounding control sites. Other onshore and recreational activities covered by land-based surveys are not documented

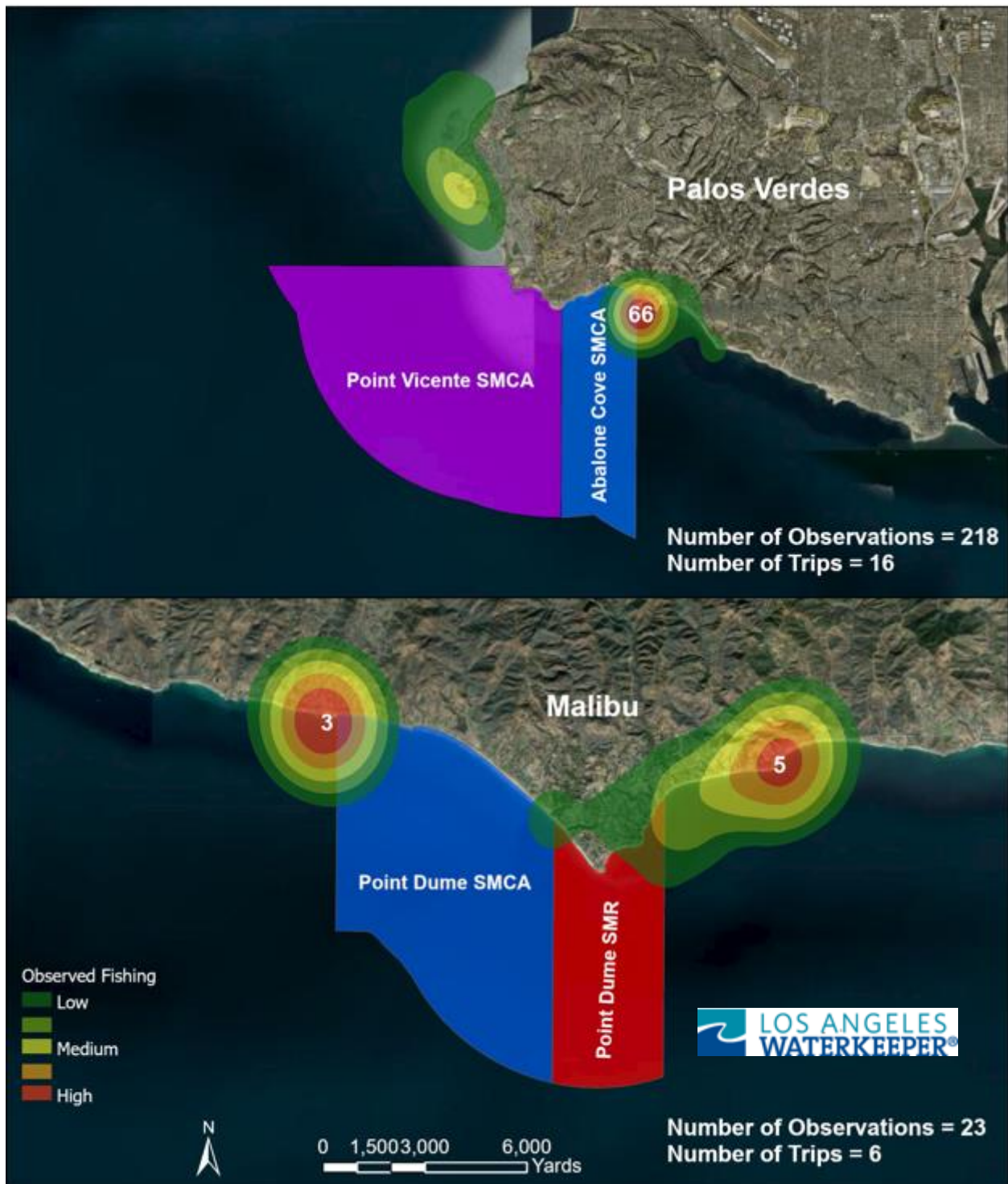
LAW's transects extend to cover entire MPAs as well as control sites that are 2 miles up and down shore of the MPA boundaries. LAW's efforts complement the LA County mainland land-based surveys conducted by Heal the Bay.

LAW shares MPA boat-based survey data with CDFW, various universities, high schools, and interested organizations, as well as in our volunteer corps including students from our indigenous, Latinx, at risk and often underserved communities. LAW provides MPA Watch data and MPA outreach and education information for academic MPA projects.

## Executive Summary

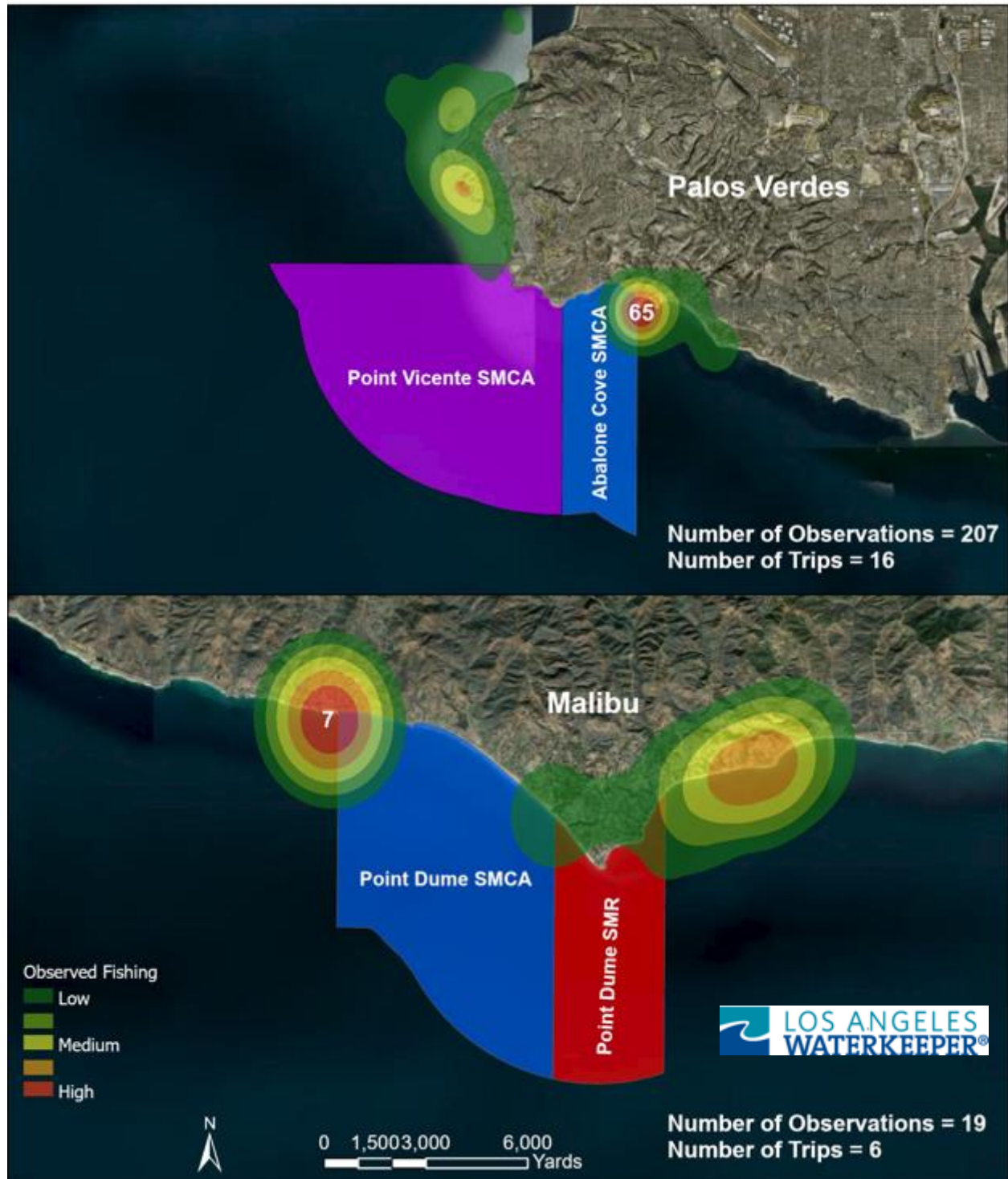
- COVID-19 certainly influenced our MPA Watch Boat-Based Survey program at LA Waterkeeper. Waterkeeper and volunteer participation in LAW's boat-based survey program was suspended indefinitely in March 2020 due to the pandemic
- Fishing effort and the number of probable violations observed per fishing effort was higher in 2020 than any other MPA survey year since our first year in 2012
- LAW responded to the onslaught of new boat owners and fishers who took to the water during the pandemic in 2020. After discussion with funders and colleagues, LAW's increased scheduled surveys up from 60-65 to include 75-80 mainland LA boat-based surveys.
- 79 were conducted with one survey aborted early on due to the unexpected appearance of extremely dense and hazardous fog. The 79 surveys LAW completed in 2020 is up from 60 surveys completed in 2019
- A dramatic increase of both on-the-water and onshore fishing and hand take from MPA tidepools was noted after LA County COVID-19 restrictions relaxed a bit in late May 2020
- Hand-take from tidepools inside our MPAs had not been observed during prior LAW boat-based surveys conducted January 2012- into early 2020
- LAW's Marine Programs Director, Michael Quill, oversees every LAW boat-based survey. Quill calls in all possible/potential violations observed occurring onshore and offshore to CalTip from the water, at the time of observance
- Probable violations observed inside the Pt. Vicente/ Abalone Cove MPAs are also reported to the Rancho Palos Verdes Rangers
- Only LAW staff manned the Waterkeeper boat from May 2020 thru December 2020 conducting surveys. LAW increased it's time spent in MPAs after the survey offering on-the-water, boat-to-boat outreach and education opportunities to fishers - especially those fishing illegally from vessels while inside the boundaries of our MPAs

## Jan - June 2020 All Fishing Activity Palos Verdes and Malibu

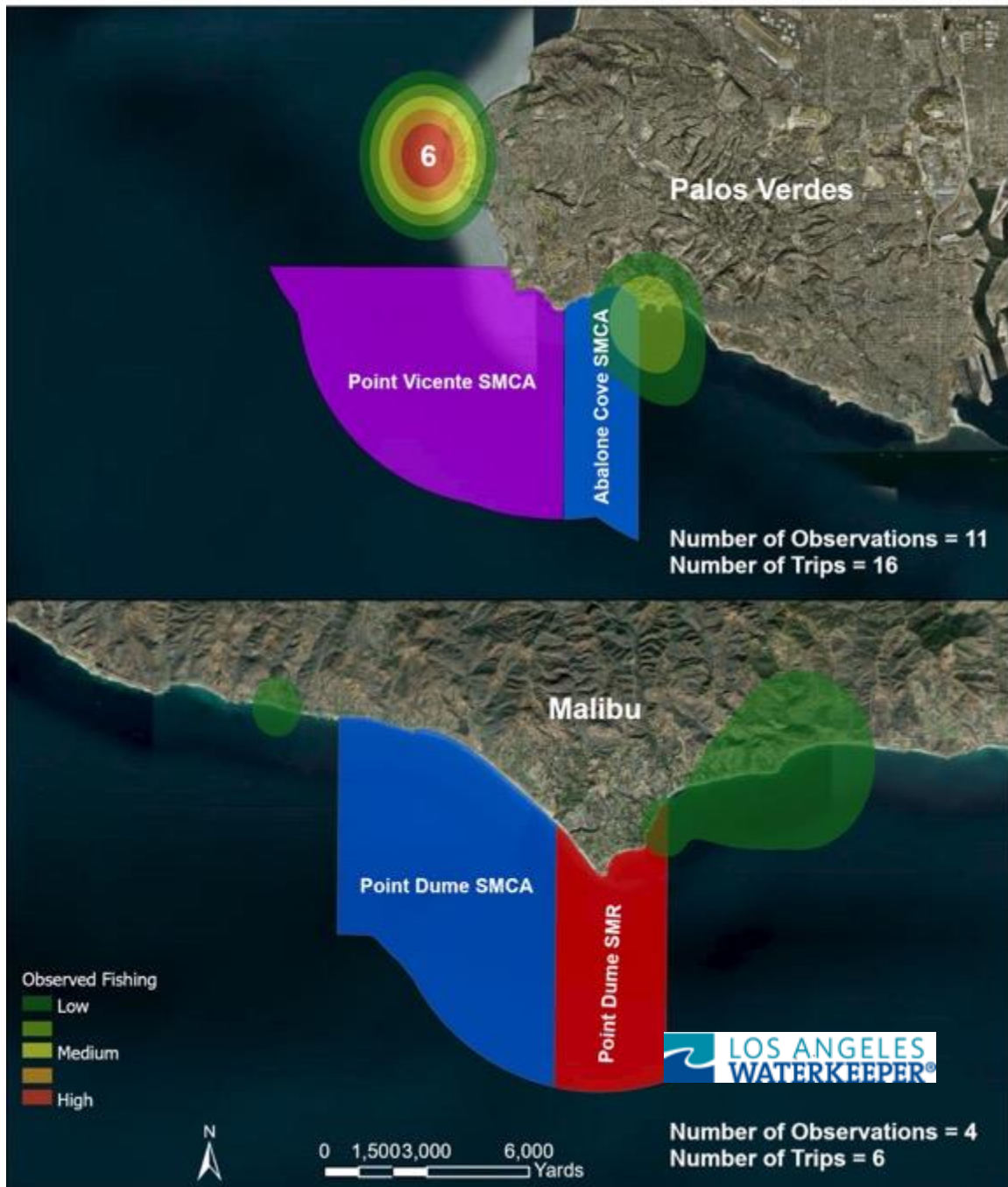




## Jan - June 2020 Recreational Fishing Activity Palos Verdes and Malibu

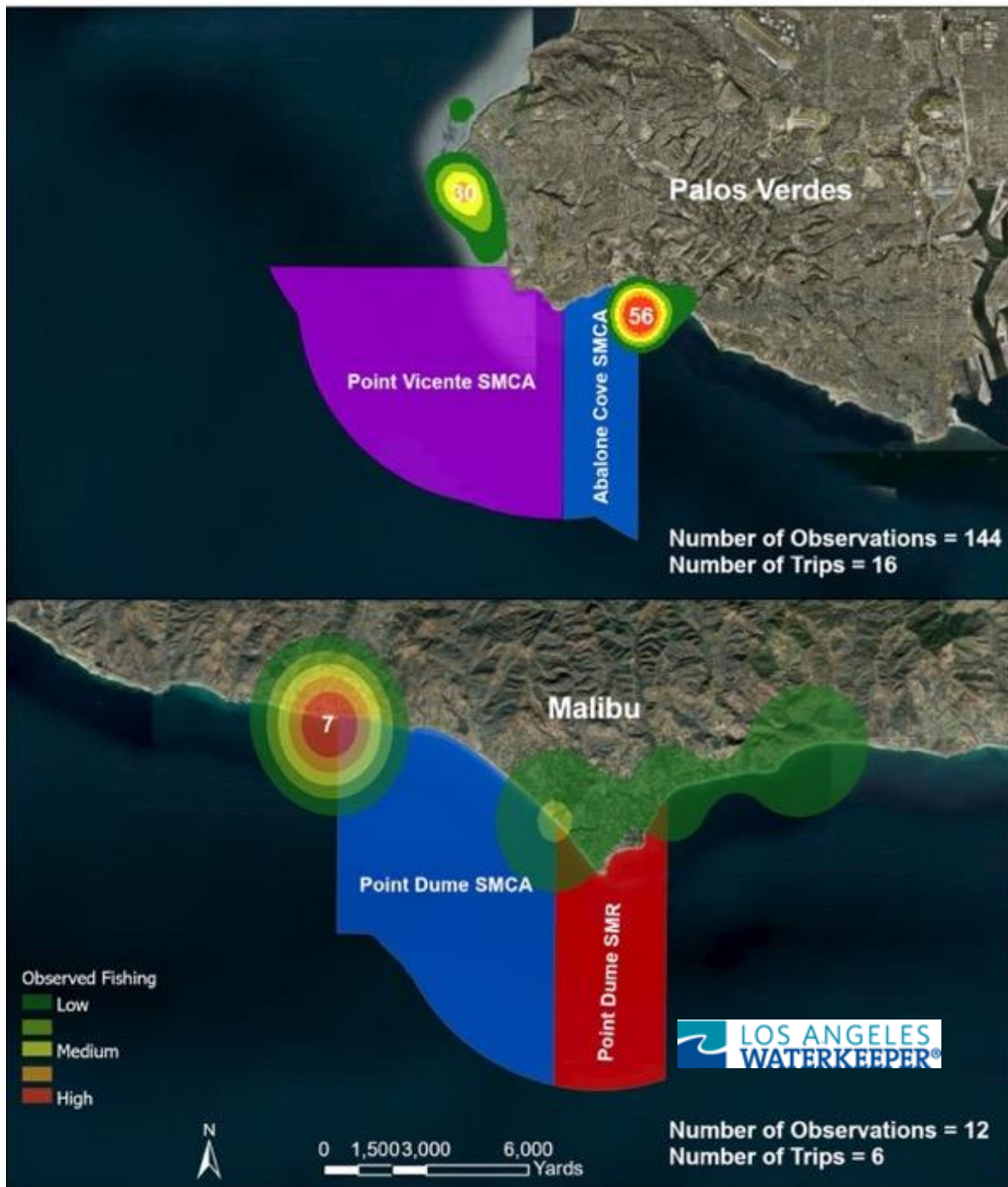


## Jan - June 2020 Commercial Fishing Activity Palos Verdes and Malibu

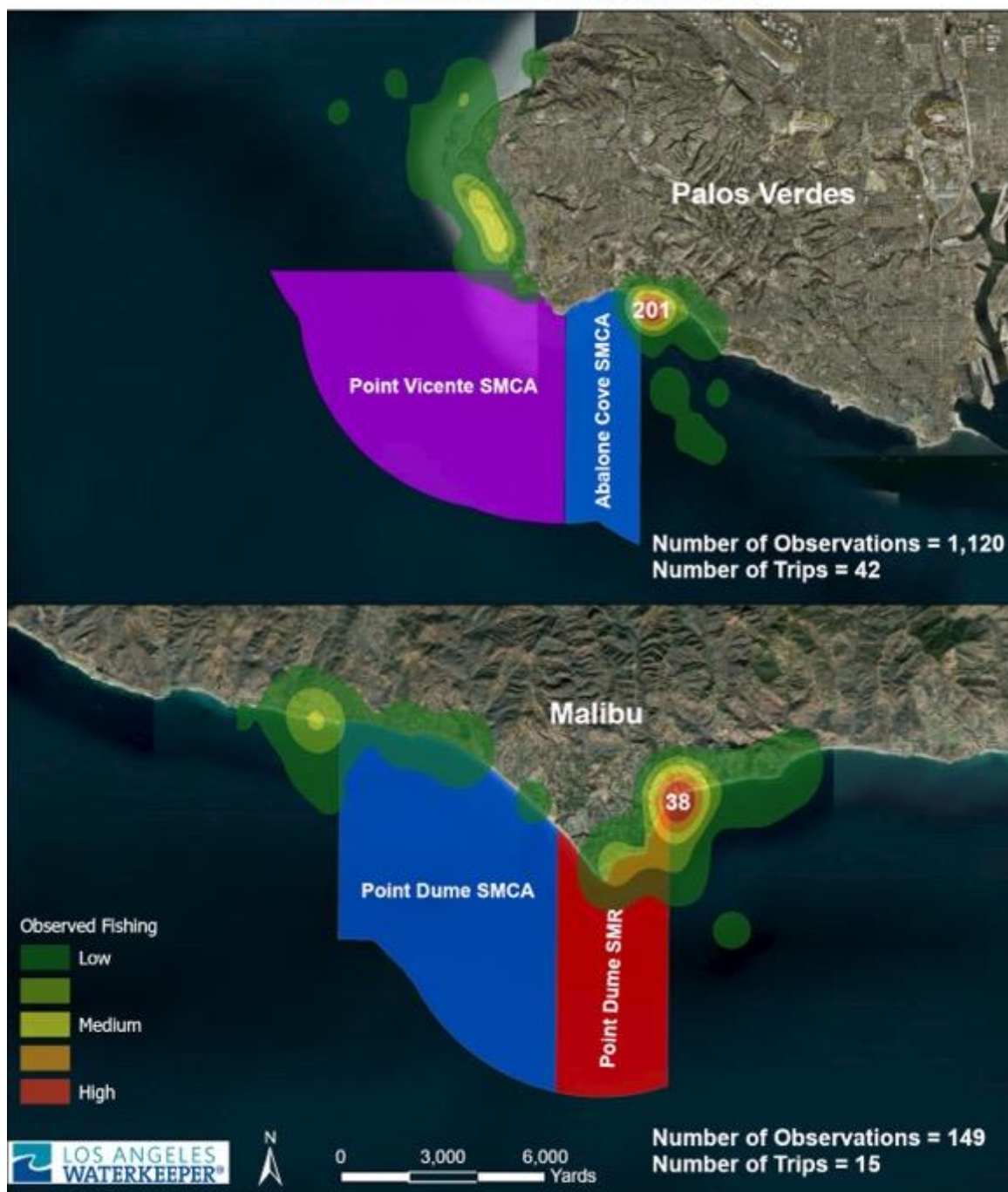




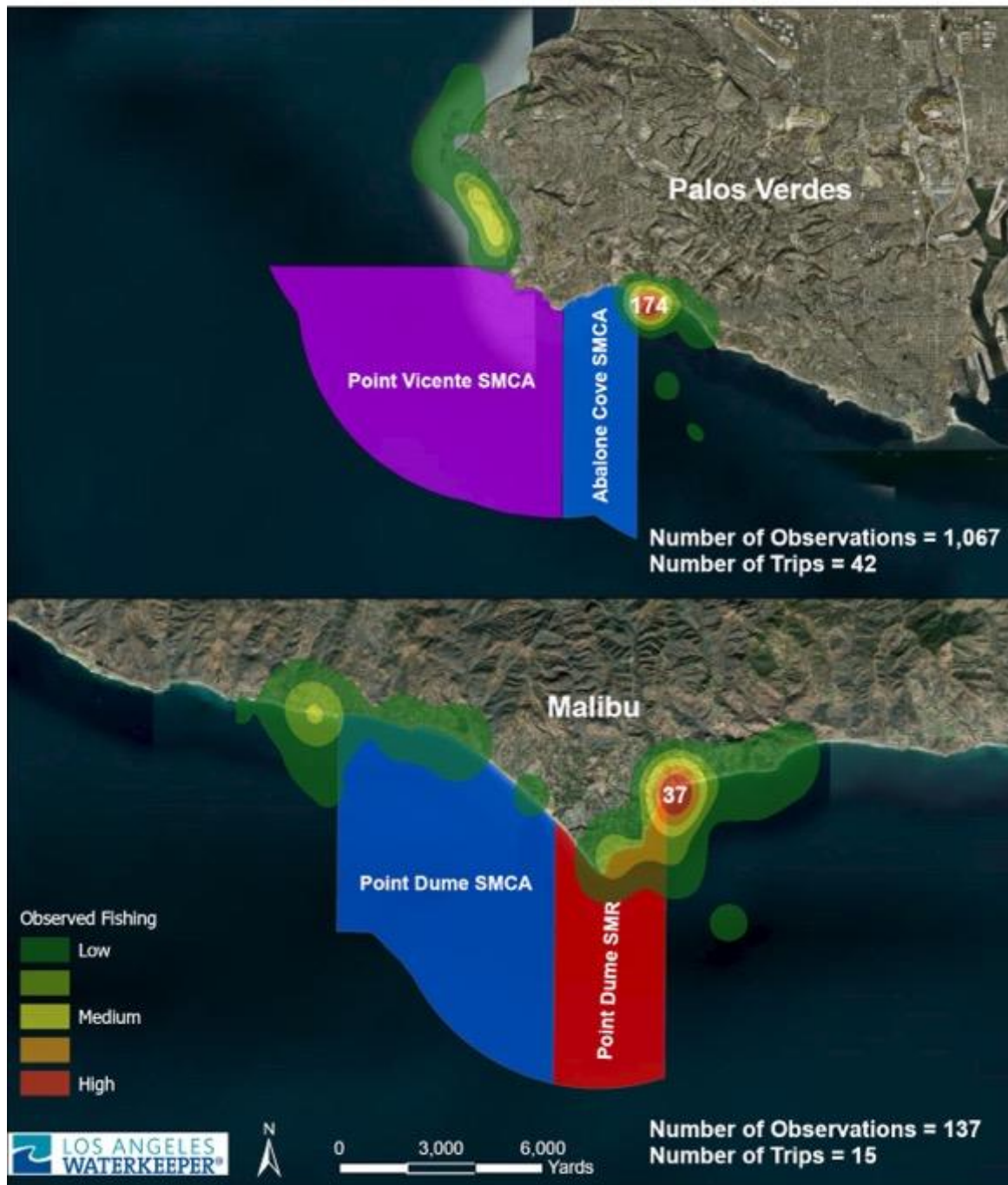
## Jan - June 2020 Onshore Fishing Activity Palos Verdes and Malibu



## July - Dec 2020 All Fishing Activity Palos Verdes and Malibu

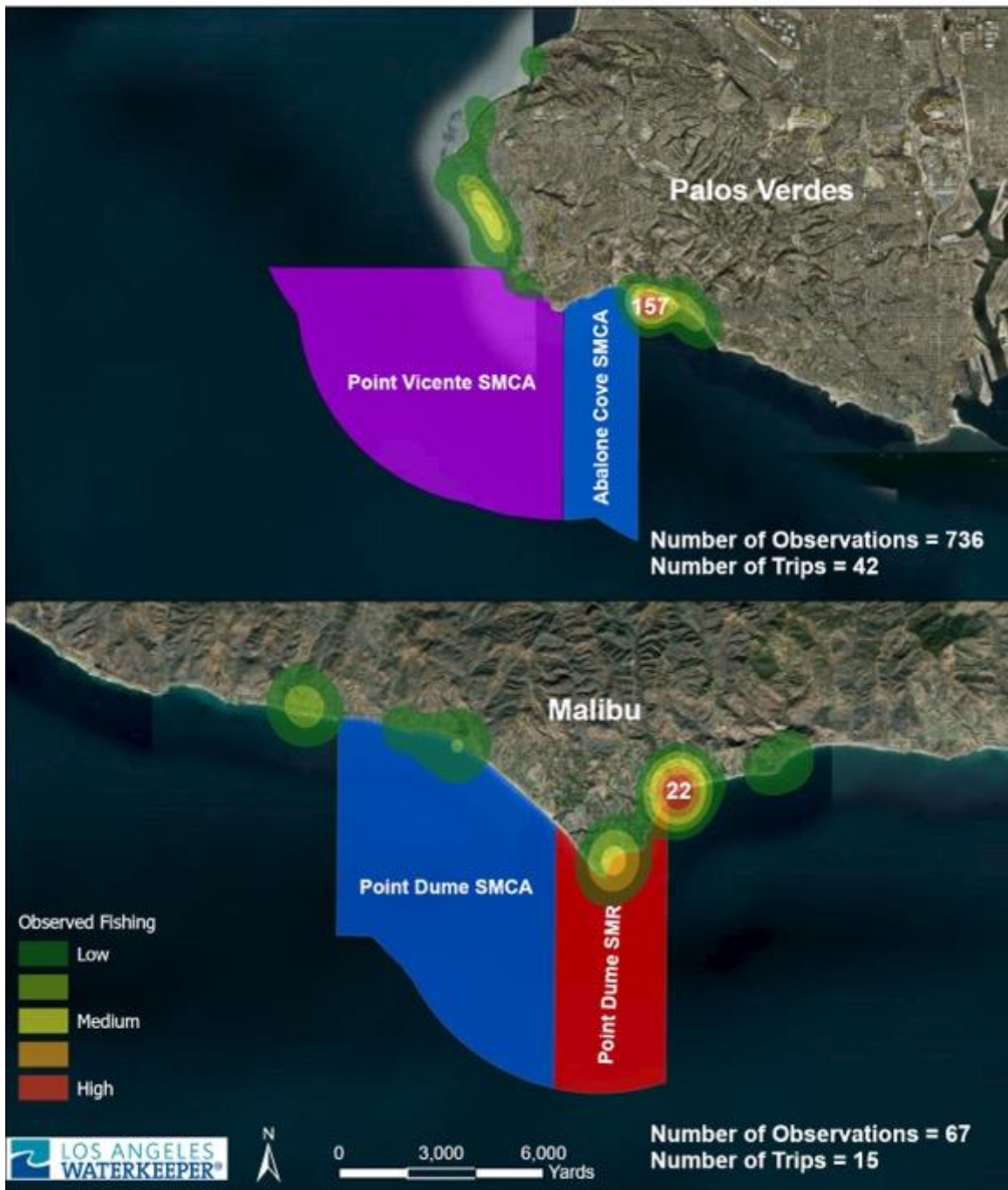


## July - Dec 2020 Recreational Fishing Activity Palos Verdes and Malibu

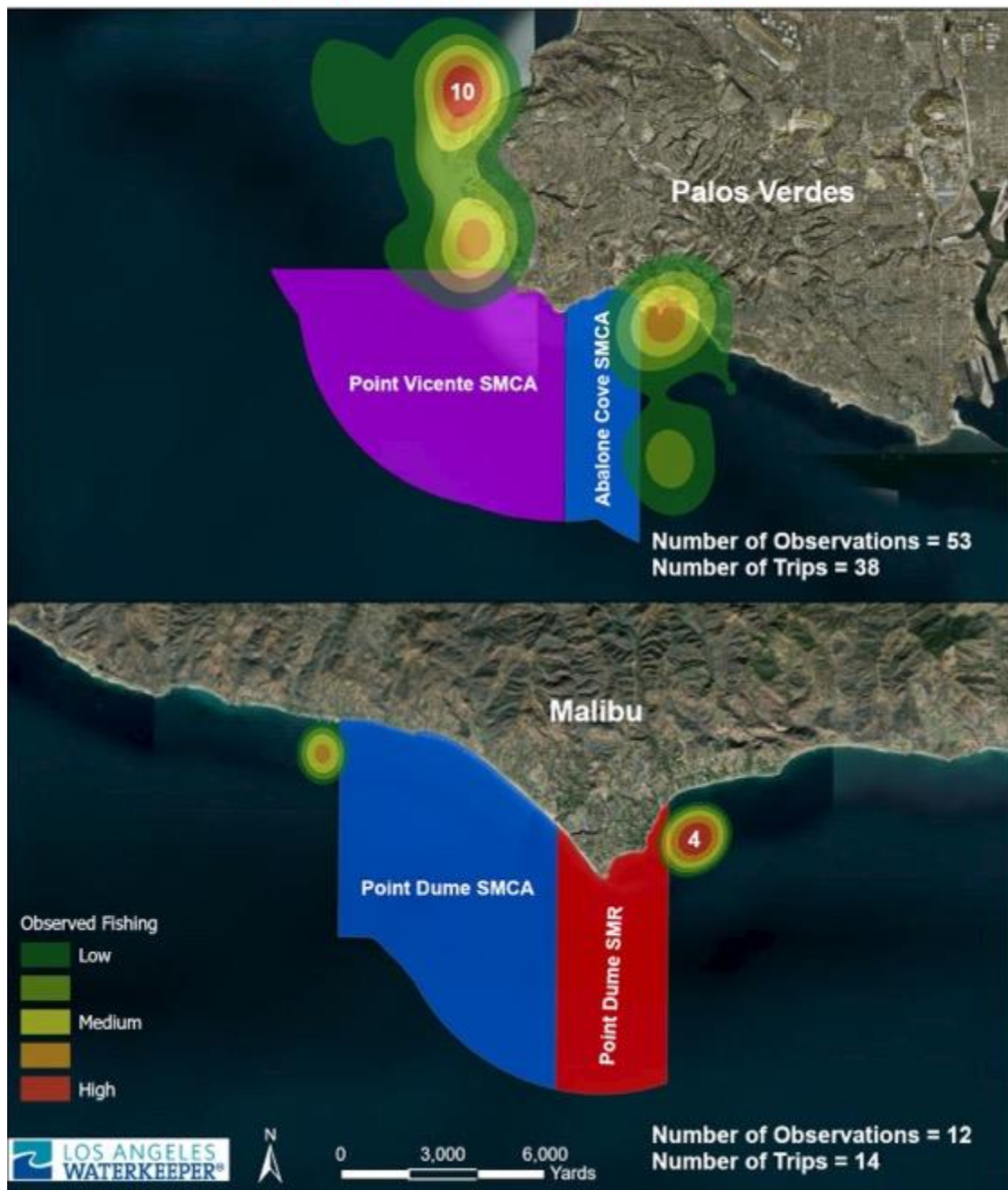




## July - Dec 2020 Onshore Fishing Activity Palos Verdes and Malibu



## July - Dec 2020 Commercial Fishing Activity Palos Verdes and Malibu





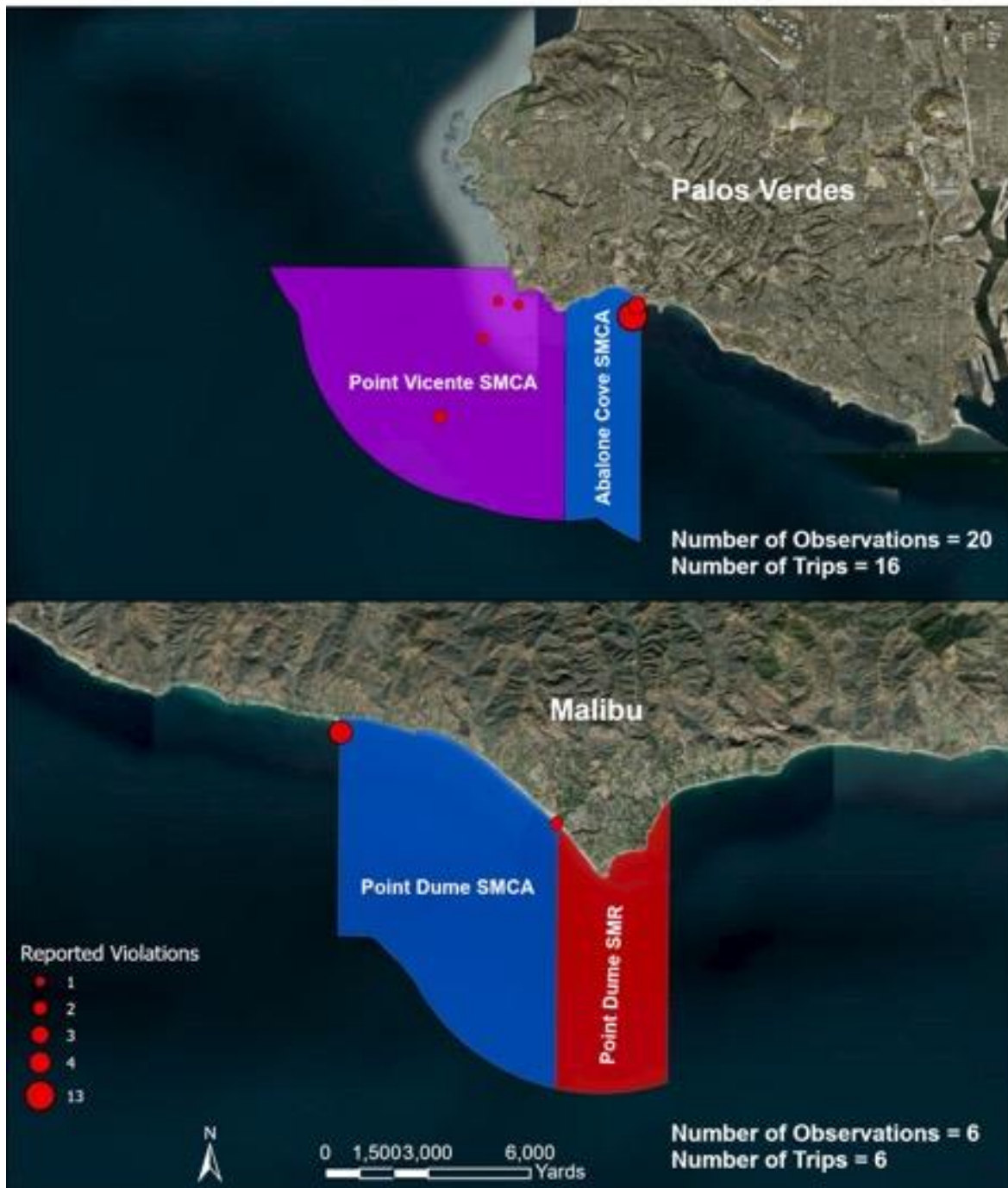
# 146 POTENTIAL MPA VIOLATIONS REPORTED BY LAW IN 2020

## 64 CalTip Calls – 16 Calls or Texts to PV Park Ranger

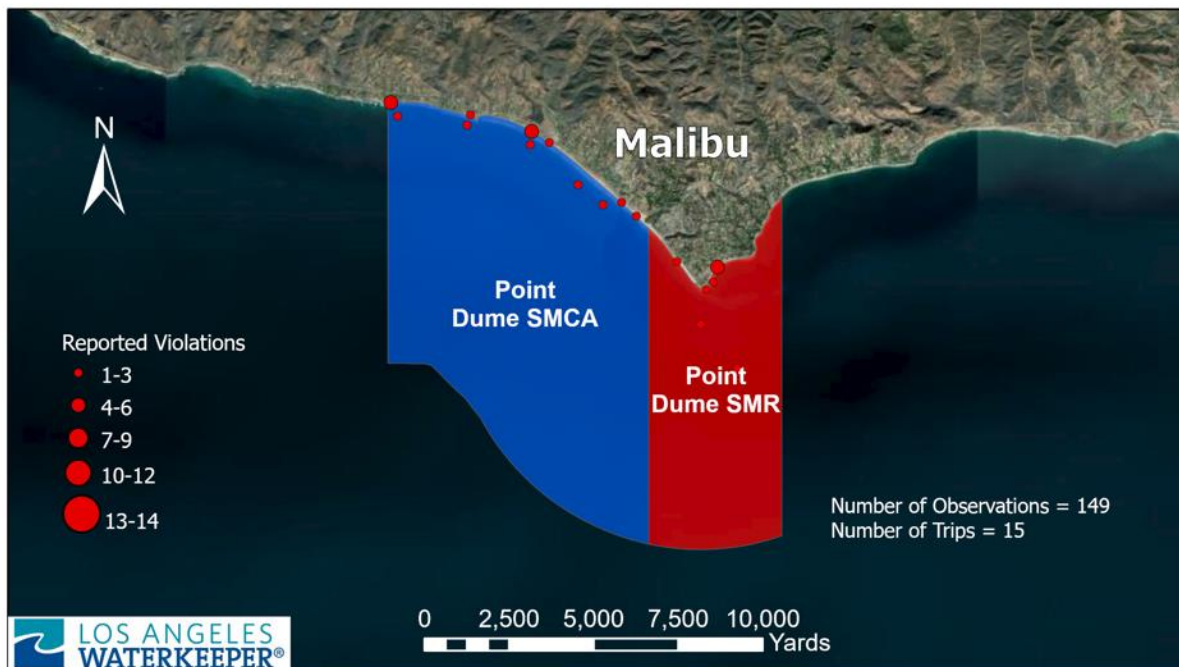
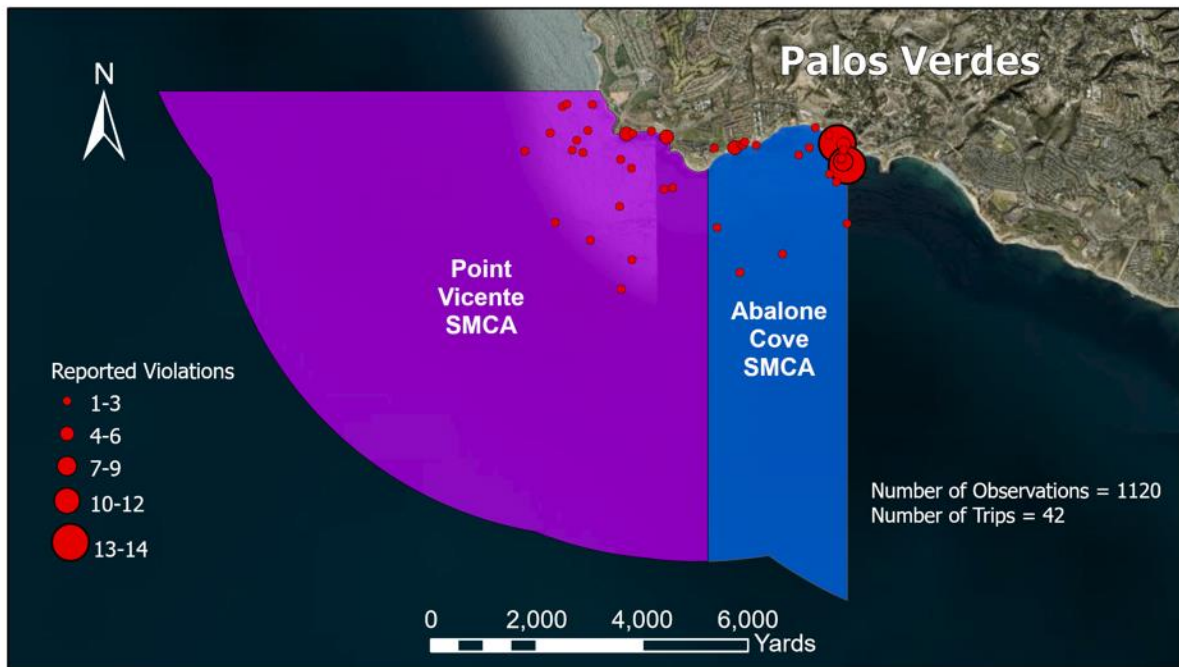
Transect	Date	Obs. Time	Latitude	Longitude	Vessel Type	Vessel	Activity	Quantity	Notes
Point Vicente SMCA Boating	2/8/20	12:31	33.71870316	-118.4161257	Recreational	Spot Fishing Boat	Fishing	1	CalTip Called, Made Contact - Provided MPA Guides & Info. Subject
Point Dume SMCA Boating	00000	13:26	34.03475447	-118.8035068	Recreational	On Shore - Rocky	Fishing	4	CalTip Called
Ahalone Cove SMCA Boating	00000	11:47	33.73795143	-118.3759908	Recreational	On Shore - Sandy	Fishing	2	CalTip Called - Ranger Texted
Point Dume SMR Boating	00000	13:28	34.0189146	-118.8182945	Recreational	On Shore - Sandy	Fishing	2	CalTip Called
Point Vicente SMCA Boating	00000	12:37	33.72970268	-118.4204208	Recreational	Spot Fishing Boat	Fishing	1	CalTip Called, Made Contact - Provided MPA Guides & Info.
Point Vicente SMCA Boating	00000	12:44	33.71666219	-118.4326704	Recreational	Jet Ski	Fishing	2	CalTip Called, Made Contact - Provided MPA Guides & Info.
Point Vicente SMCA Boating	00000	12:05	33.73785751	-118.4102221	Recreational	Power Boat	Fishing	1	CalTip Called, Made Contact - Provided MPA Guides & Info.
Ahalone Cove SMCA Boating	00000	11:39	33.7377533	-118.3760318	Recreational	On Shore - Rocky	Fishing	3	CalTip & Ranger called - subject took some groups by hand - broke * CalTip stopped reported they had more at next site prior to next call.
Ahalone Cove SMCA Boating	00000	11:40	33.7319441	-118.3773263	Recreational	On Shore - Rocky	Fishing	13	CalTip Called - Ranger called - subject
Point Vicente SMCA Boating	7/2/20	12:47	33.74158035	-118.4153118	Recreational	Power Boat	Fishing	1	CalTip Called, Made Contact - Provided MPA Guides & Info.
Ahalone Cove SMCA Boating	00000	09:40	33.73760887	-118.3779315	Recreational	On Shore - Rocky	Fishing	3	CalTip & Ranger called - subject took
Point Vicente SMCA Control N	00000	11:41	33.7498108	-118.4135795	Recreational	Power Boat	Fishing	1	CalTip - Ranger dispatch made contact - made & info.
Point Dume SMCA Boating	8/1/20	11:02	34.02880679	-118.8304813	Recreational	On Shore - Rocky	Fishing	5	CalTip Called
Point Dume SMCA Boating	8/1/20	11:35	34.0335926	-118.8640646	Recreational	Kayak	Fishing	2	CalTip Called, Made Contact - Provided MPA Guides & Info.
Point Dume SMCA Boating	8/1/20	11:49	34.03543024	-118.809423	Recreational	Power Boat	Fishing	1	CalTip Called, Made Contact - Provided MPA Guides & Info.
Point Dume SMR Boating	8/8/20	11:09	33.90156279	-118.8073793	Recreational	Power Boat	Fishing	1	CalTip Called, Made Contact - Provided MPA Guides & Info.
Point Dume SMCA Boating	8/8/20	11:49	34.05037981	-118.8241143	Recreational	Kayak	Fishing	1	CalTip Called, Made Contact - Provided MPA Guides & Info.
Point Dume SMCA Boating	00000	15:15	34.01754407	-118.8310626	Recreational	Kayak	Fishing	1	CalTip Called, Made Contact - Provided MPA Guides & Info.
Point Dume SMCA Boating	00000	13:48	34.03577195	-118.8633136	Recreational	On Shore - Sandy	Fishing	3	CalTip Called
Point Vicente SMCA Boating	00000	12:00	33.71505113	-118.4152542	Recreational	Power Boat	Fishing	1	CalTip Called, Made Contact - Provided MPA Guides & Info.
Point Vicente SMCA Boating	00000	12:06	33.73901894	-118.4177405	Recreational	Spot Fishing Boat	Fishing	1	CalTip Called, Made Contact - Provided MPA Guides & Info.
Point Vicente SMCA Boating	00000	12:08	33.74031902	-118.4170853	Recreational	Power Boat	Fishing	1	CalTip Called, Made Contact - Provided MPA Guides & Info.
Ahalone Cove SMCA Boating	00000	12:10	33.72961700	-118.3952812	Recreational	Spot Fishing Boat	Fishing	1	CalTip Called, Made Contact - Provided MPA Guides & Info.
Point Vicente SMCA Boating	00000	12:23	33.70543448	-118.4091309	Recreational	On Shore - Rocky	Fishing	3	CalTip Called - Ranger Texted
Point Vicente SMCA Boating	00000	12:31	33.73419371	-118.4022169	Recreational	Power Boat	Fishing	1	CalTip Called, Made Contact - Provided MPA Guides & Info.
Ahalone Cove SMCA Boating	00000	12:54	33.73991578	-118.3778074	Recreational	Power Boat	Fishing	1	CalTip Called, Made Contact - Provided MPA Guides & Info.
Ahalone Cove SMCA Boating	00000	11:23	33.73912435	-118.375339	Recreational	On Shore - Rocky	Fishing	2	CalTip & Ranger Called
Ahalone Cove SMCA Boating	00000	11:26	33.73753134	-118.3929526	Recreational	On Shore - Rocky	Fishing	4	CalTip Called & RPV Ranger Texted and responded
Ahalone Cove SMCA Boating	00000	11:28	33.70293144	-118.3909285	Recreational	Power Boat	Fishing	1	CalTip Called, Made Contact - Provided MPA Guides & Info.
Ahalone Cove SMCA Boating	9/5/20	11:33	33.71839013	-118.382591	Recreational	Kayak	Fishing	1	CalTip - Respond by DFW Doug
Ahalone Cove SMCA Boating	9/5/20	11:36	33.74008977	-118.3909339	Recreational	Power Boat	Fishing	1	CalTip - Respond by DFW Doug
Point Dume SMR Boating	9/5/20	12:11	33.96307442	-118.7991972	Recreational	Power Boat	Fishing	1	CalTip Called
Point Vicente SMCA Boating	00000	12:43	33.74122527	-118.4212001	Recreational	Spot Fishing Boat	Fishing	1	CalTip Called
Point Vicente SMCA Boating	00000	12:55	33.73670064	-118.4083335	Recreational	Spot Fishing Boat	Fishing	1	CalTip Called
Ahalone Cove SMCA Boating	00000	13:47	33.73981051	-118.3915823	Recreational	On Shore - Rocky	Fishing	3	CalTip Called & Ranger Texted - Responded
Point Vicente SMCA Boating	00000	11:22	33.7339845	-118.4034923	Recreational	Spot Fishing Boat	Fishing	1	CalTip Called
Point Vicente SMCA Boating	00000	11:28	33.74467458	-118.4192904	Recreational	Spot Fishing Boat	Diving	1	CalTip Called - Diver was pulling subject
Point Vicente SMCA Boating	00000	11:32	33.70480672	-118.4136199	Recreational	Power Boat	Fishing	1	CalTip Called
Point Vicente SMCA Boating	00000	11:44	33.73915773	-118.4115101	Recreational	On Shore - Rocky	Fishing	3	CalTip Called
Ahalone Cove SMCA Boating	00000	12:11	33.73968179	-118.38915	Recreational	Power Boat	Fishing	1	CalTip Called
Point Vicente SMCA Boating	00000	12:06	33.73915773	-118.4115101	Recreational	On Shore - Rocky	Fishing	6	CalTip Called & Ranger Texted - Responded
Ahalone Cove SMCA Boating	00000	12:14	33.73493054	-118.3766975	Recreational	Power Boat	Fishing	1	CalTip Called - Made Contact
Ahalone Cove SMCA Boating	00000	11:19	33.7326231	-118.3957298	Recreational	Power Boat	Fishing	1	CalTip Called - Made Contact
Point Vicente SMCA Boating	00000	12:30	33.71298499	-118.402183	Recreational	On Shore - Rocky	Fishing	6	CalTip Called - Ranger Called
Point Dume SMR Boating	00000	11:56	34.02026	-118.80414	Recreational	On Shore - Rocky	Fishing	2	CalTip
Point Dume SMCA Boating	00000	13:00	34.02968749	-118.8487093	Recreational	Power Boat	Fishing	1	CalTip Called - Made contact - saw subject
Point Vicente SMCA Boating	00000	10:12	33.70212156	-118.4248794	Recreational	Power Boat	Fishing	1	CalTip Called at 10:10 - Made Contact
Point Vicente SMCA Boating	00000	10:24	33.67166402	-118.4248277	Recreational	On Shore - Rocky	Fishing	2	CalTip Called & Ranger Called
Ahalone Cove SMCA Boating	00000	10:47	33.73985963	-118.3785283	Recreational	On Shore - Rocky	Fishing	14	CalTip Called & RPV Ranger Called
Point Vicente SMCA Boating	00000	11:07	33.6698649	-118.4683061	Recreational	Power Boat	Fishing	1	CalTip Called - Made Contact
Point Dume SMR Boating	00000	09:44	34.02820429	-118.8088113	Recreational	On Shore - Sandy	Fishing	1	Ranger Called - Rony & CalTip Called
Ahalone Cove SMCA Boating	00000	12:59	33.73963635	-118.3912443	Recreational	On Shore - Rocky	Fishing	2	CalTip Called - Ranger Texted - Responded - Fire Dept. called
Ahalone Cove SMCA Boating	00000	14:46	33.73503627	-118.3829397	Recreational	On Shore - Rocky	Fishing	4	CalTip & Ranger Called
Ahalone Cove SMCA Boating	00000	12:29	33.73915	-118.3809	Recreational	Sailboat	Fishing	1	CalTip Called - Diver - DFW - Fishing - observed at 10:10 - MPA guides - subject - Ahalone Cove - DFW
Point Dume SMR Boating	00000	12:45	33.9977122	-118.8062453	Recreational	On Shore - Sandy	Fishing	3	CalTip - Warden Bagdikian Called back
Point Dume SMCA Boating	00000	12:54	34.01462392	-118.8301356	Recreational	On Shore - Sandy	Fishing	1	CalTip Called
Point Dume SMR Boating	00000	09:53	33.9743424	-118.8036958	Recreational	On Shore - Rocky	Fishing	4	CalTip Called - Warden Bagdikian Called back
Point Dume SMCA Boating	00000	09:48	34.03066779	-118.8442087	Recreational	On Shore - Rocky	Fishing	2	CalTip - Warden Bagdikian called back
Ahalone Cove Control East Bo	00000	13:12	33.72219052	-118.355043	Recreational	Spot Fishing Boat	Fishing	1	CalTip Called Made contact declined - subject - DFW
Point Vicente SMCA Boating	00000	14:46	33.70601257	-118.4039916	Recreational	On Shore - Rocky	Fishing	3	CalTip Called & Ranger Called - Made Contact
Point Vicente SMCA Boating	00000	11:31	33.72236578	-118.4301433	Recreational	Power Boat	Fishing	1	CalTip Called - Made Contact - Maps
Ahalone Cove SMCA Boating	00000	11:47	33.73755189	-118.3756071	Recreational	On Shore - Rocky	Fishing	8	CalTip Called & Ranger Called - Ranger Called - Responded
Point Vicente SMCA Boating	00000	11:35	33.7449754	-118.4186183	Recreational	Power Boat	Fishing	1	CalTip Called - Made Contact
TOTAL								146	POTENTIAL VIOLATIONS REPORTED



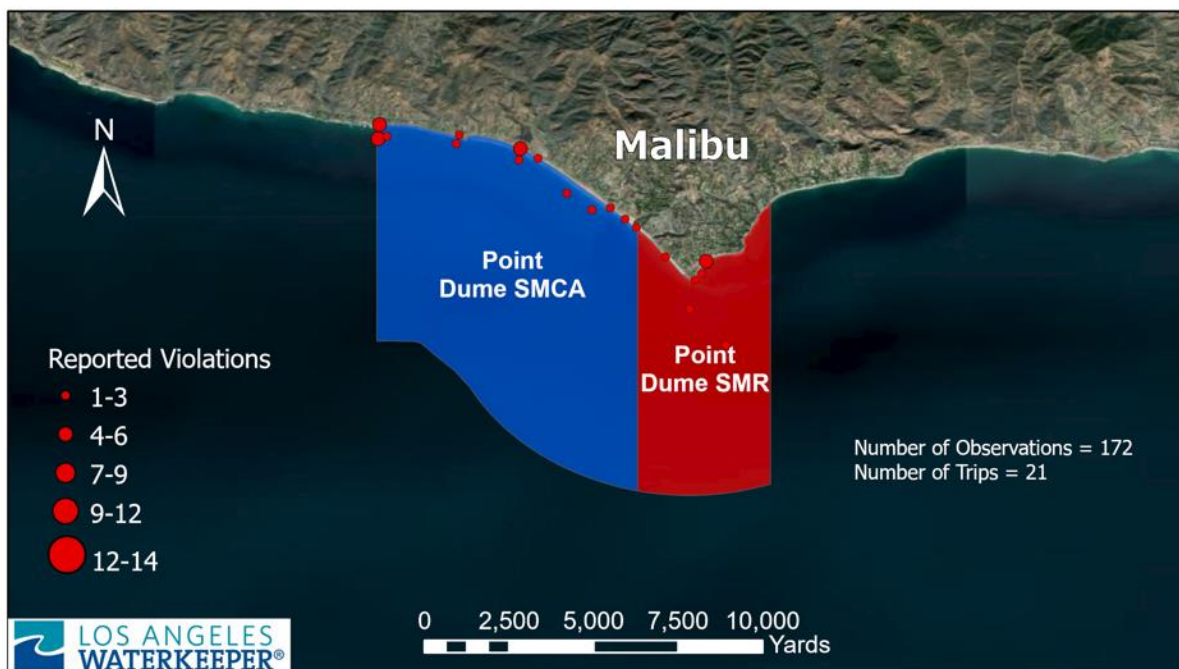
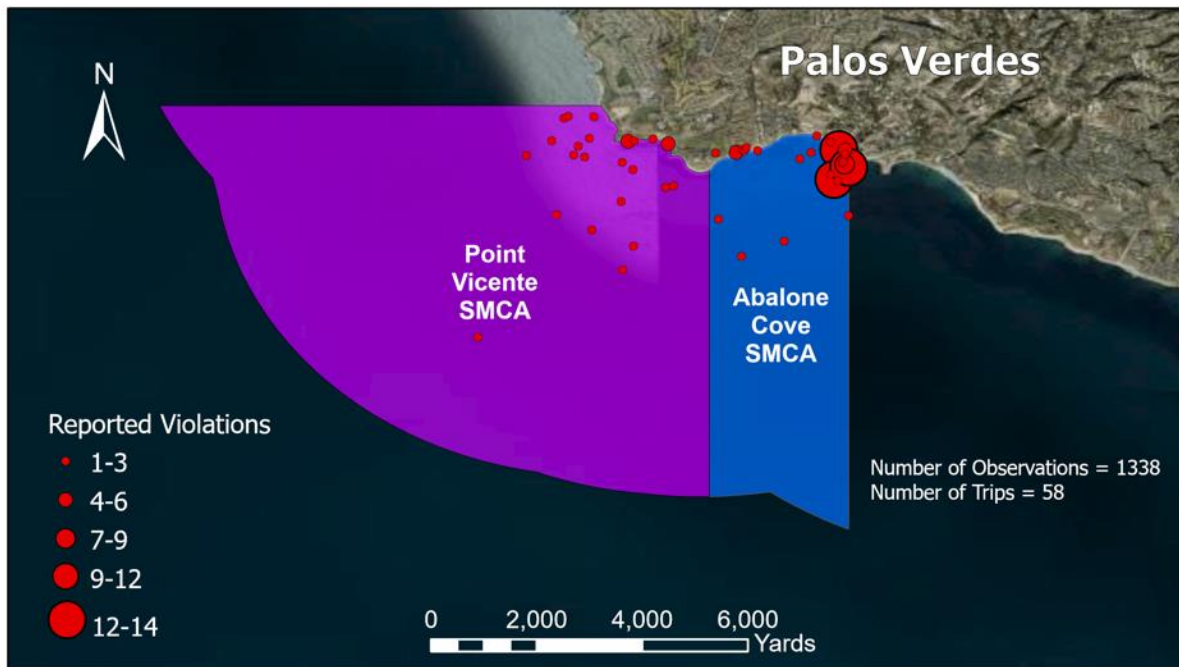
## Jan - June 2020 Reported Violations Palos Verdes and Malibu



# July-Dec 2020 Reported MPA Violations



# Jan-Dec 2020 Reported MPA Violations





## LAW'S MPA WATCH BOAT BASED SURVEYS



MPA Watch Boat Based Surveys conducted from the LA Waterkeeper vessel focus on boating and fishing activity in and around the Point Dume and Point Vicente/Abalone Cove, Los Angeles County Mainland MPAs at this time. Google Earth and GIS Mappings are produced. Collected information helps inform CA DFW staff and future scientific studies on MPA activities. Waterkeeper conducts 60-70 surveys a year, split between the two mainland MPAs.

### **MPA Watch Boat Crew Positions - 5 Volunteer Spots Available Each Trip**

1. Boat Operator – Quill - LAW Staff
2. Spotter – Binoculars – (not shown)
3. Distance Finder Operator
4. Photographer
5. Data Scribe
6. IPAD - GPS Unit Operator

### **Transect Start and End Points**

Surveys begin and end two miles past either side of the MPA boundaries.

### **Boat speed during transect**

Transects are run at a speed of approximately 10 knots and roughly a half-mile from shore.

### **Data Collection**

All boating activity and all onshore fishing observed, inside or outside the MPAs, while traveling a transect are documented.

Waterkeeper stays at a safe, unobtrusive distance from the observed vessels, moving to position the observed on a heading of directly North, South, East, or West from the Waterkeeper.

For Each Vessel or Onshore Fishers:

1. The time of sighting is documented.
2. Waterkeeper's GPS position is documented.
3. The compass heading from the Waterkeeper is documented.
4. The distance from the Waterkeeper is documented
5. Vessel type or onshore fishing method is documented.
6. Quantity of observed vessels or fishers onshore is documented.
7. Two Photos are taken of the vessel or fishers.
8. Any additional notes and comments are documented.

If fishers are violating MPA Regulations from a vessel or onshore, DFW is called and a report is filed. That action is also documented.

### **On The Water Outreach and Education**

LA Waterkeeper views fisher's fishing from vessels positioned on the MPA boundary, and within MPA boundaries, as potential on the water outreach opportunities. After collecting data from a safe distance, and on a case-by-case basis, Waterkeeper may approach violating fishers in vessels slowly and safely. As part of our good neighbor outreach and education approach, Waterkeeper informs violators of the MPA regulations, and provides information on where fishing is permitted. After making contact and getting permission from the boaters/fishers, Waterkeeper will safely approach, inform boaters, fishermen, and other fellow watermen about MPA boundaries and MPA regulations. DFW Guides and MPA maps are also distributed if desired, and if it can be done so safely.

If boaters are open to conversation and possess a VHF radio that may be used to communicate, if boater to boater conversing is hampered.

## Join Us on the Waterkeeper Boat for a MPA Watch Trip!



© Tom Boyd Images 2013



### What is a MPA?

A Marine Protected Area (MPA) is an area of the ocean where consumptive human activities such as fishing are limited or restricted in order to protect or conserve marine life or habitats.

On land, we have National Parks, National Forests, Reserves, etc. Marine Protected Areas provide similar protection to small areas in the ocean.

The main purpose of MPA Watch is to conduct outreach to local fisherman, boaters, and watersports enthusiasts about the new boundaries and restrictions and to gather data on the trends of boating and fishing in and around the Los Angeles County Marine Protected Areas.

Waterkeeper's MPA Watch Trips run about 4-5 hours. We travel from Marina Del Rey to the Point Vicente and Abalone Cove MPAs in Palos Verdes or to the Point Dume MPAs in Malibu.

MPA Watch Boat Trips are scheduled on our Calendar at [www.LAWaterkeeper.org/mpa-watch](http://www.LAWaterkeeper.org/mpa-watch).



Contact Michael Quill: [mquill@lawaterkeeper.org](mailto:mquill@lawaterkeeper.org) (310) 394-6162, ext. 113 – If you'd like to join our MPA Watch Crew.





## Los Angeles Waterkeeper's MPA Watch Boat - Based Surveys 2020!



**Thank you to LAW volunteer crew members who get it done!**



**LAW provides MPA outreach materials to fuel docks onshore**



**and to fishers on the water**





**As soon as the COVID-19 pandemic subsides and social distancing restrictions are lifted, we'll be crewing up the Waterkeeper again with volunteers!**

**Michael Quill Marine Programs Director**  
**mquill@lawaterkeeper.org**

#### **Additional Information**

For additional information on MPA Watch, including survey sites, participating organizations, protocols and datasheets, media kit, and how to get involved, please visit [mpawatch.org](http://mpawatch.org). Connect with MPA Watch on social media @MPAWatchOrg