



Marine Protected Area (MPA) Watch Regional Report

Santa Barbara County

January 1, 2020 – December 31, 2020



MPA Watch is a statewide collaborative effort to collect critical human use data to enhance the management and conservation of marine protected areas (MPAs). MPA Watch data informs the management, enforcement, and science of California's MPAs and allows us insight on how human uses are changing as a result of MPA implementation. By involving local communities in this important work, MPA Watch programs inspire and empower stewardship, and educate California communities about ocean ecosystems. MPA Watch trains volunteers to observe and collect unbiased data on coastal and marine resource use. The Santa Barbara Marine Protected Area (MPA) Watch Program, organized by Santa Barbara Channelkeeper, engages community scientists in conducting surveys in three MPAs in southern Santa Barbara County—Campus Point State Marine Conservation Area, Naples State Marine Conservation Area, and Kashtayit State Marine Conservation Area.

Executive Summary

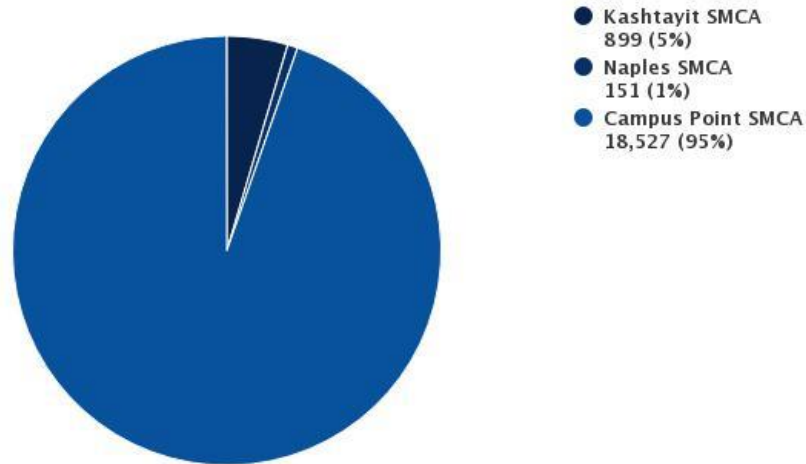
- Non-consumptive activities (onshore and offshore) account for 99.27% of observations in the Campus Point, Naples, and Kashtayit MPAs.
- According to MPA Watch volunteers, potential violations of shore-based hook and line fishing in the western section of the Campus Point SMCA continue to be observed throughout the year.
- Similar to past years, onshore recreation is the number one activity observed for Campus Point and Kashtayit SMCAs, although Campus Point saw increased activity in both onshore and offshore activities. Naples SMCA also saw a significant increase in non-consumptive onshore and offshore (surfing) activities during 2020.

Human Use of MPAs January – December 2020

Overview

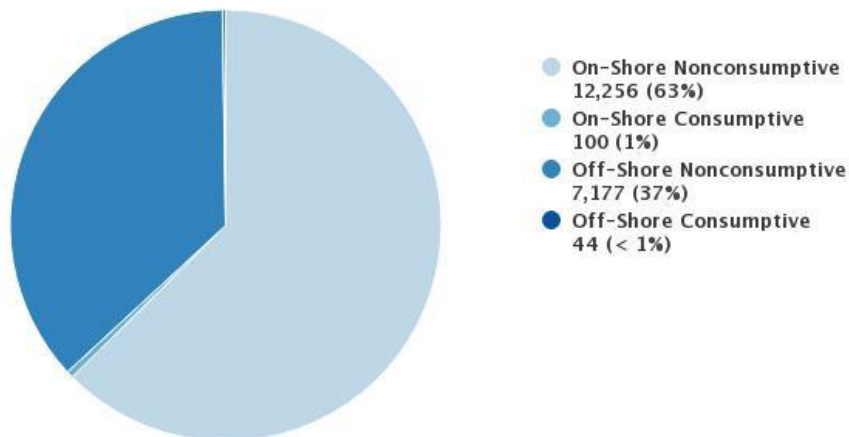
Top 3 MPAs by All Activity

January 1, 2020 – December 31, 2020
19,577 total activity events



All MPAs Combined

January 1, 2020 – December 31, 2020
19,577 activity events



Activity Classifications

On-Shore - Activities that take place on a sandy or rocky beach. Excludes bluffs, trails, sea walls, parking lots, or other man-made structures. Includes recreation, tidepooling, shore-based fishing, etc.

Off-Shore - Activities that take place offshore, typically in knee-deep water or deeper. Includes surfing, SCUBA diving, kayaking, boat fishing, etc.

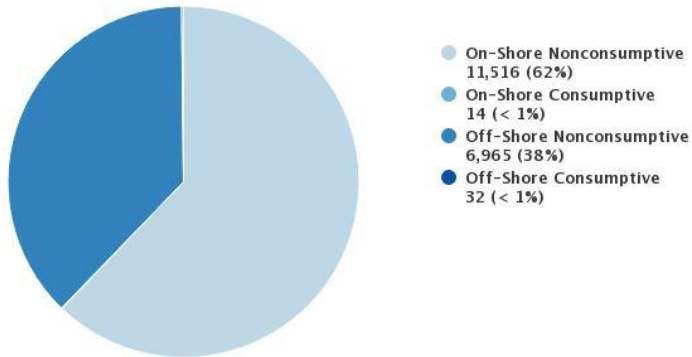
Consumptive - An activity in which a natural resource (i.e. fish, kelp, shells) is being collected.

Non-Consumptive - An activity in which a natural resource is not collected.

Activity by MPA

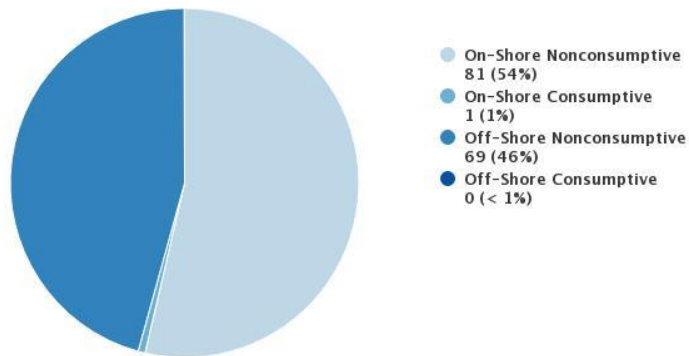
Campus Point SMCA

January 1, 2020 – December 31, 2020
18,527 activity events



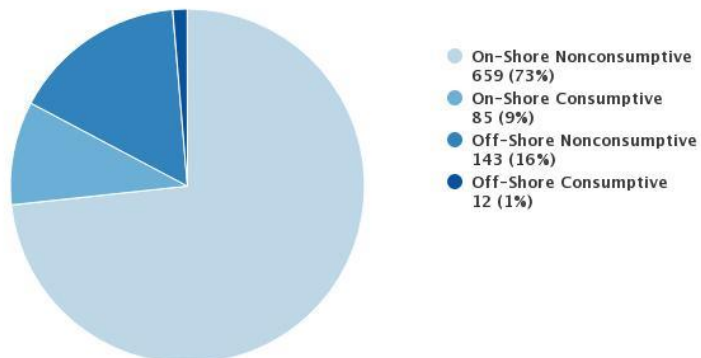
Naples SMCA

January 1, 2020 – December 31, 2020
151 activity events



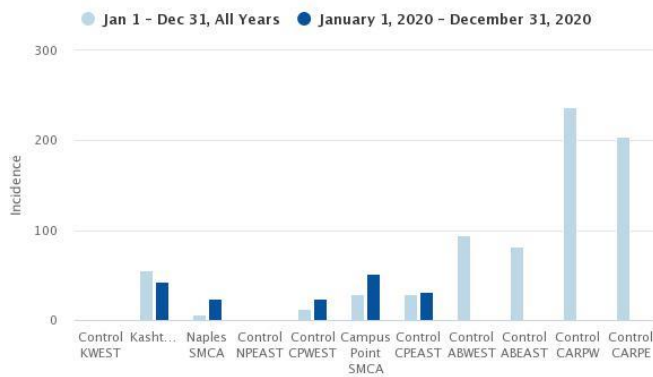
Kashtayit SMCA

January 1, 2020 – December 31, 2020
899 activity events

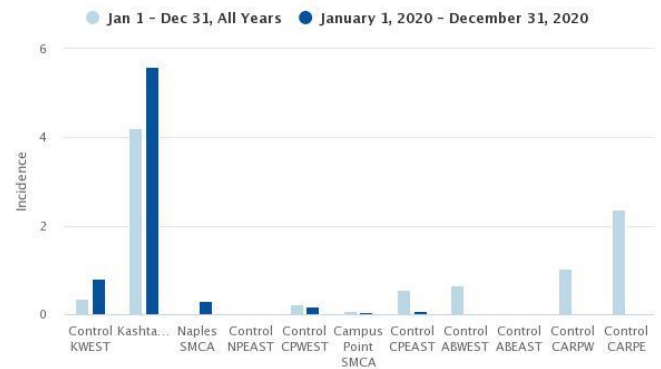


Activity Incidence by MPA

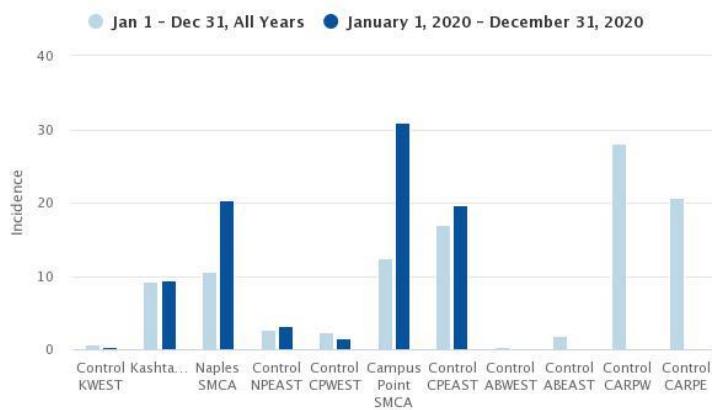
On-Shore, Non-Consumptive



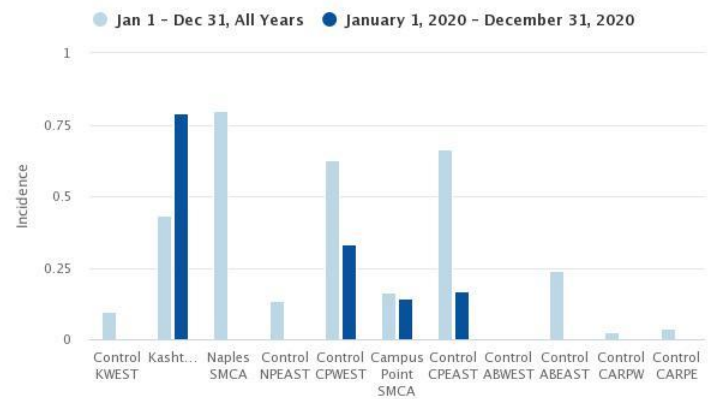
On-Shore, Consumptive



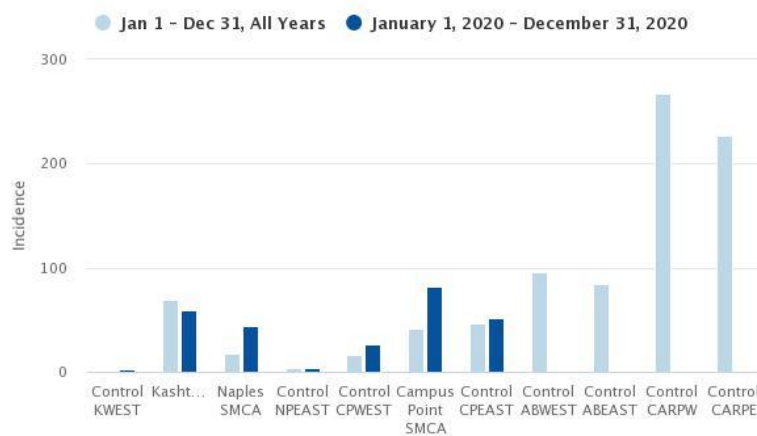
Off-Shore, Non-Consumptive



Off-Shore, Consumptive



All Activity



The above charts show incidence values for each MPA monitored by MPA Watch in Santa Barbara County. **Incidence is calculated as number of activities recorded divided by total survey-miles.**

Activity Incidence by MPA

The tables below show incidence values for each MPA monitored by MPA Watch in Santa Barbara County. **Incidence is calculated as number of activities recorded divided by total survey-miles.**

MPA	On-Shore				
	Non-Consumptive			Consumptive	
	▲	Jan 1 Dec 31	Jan 1, 2020 through Dec 31, 2020	Jan 1 Dec 31	Jan 1, 2020 through Dec 31, 2020
		All Years	♦	All Years	♦
Control KWEST		0.7		0.4	0.8
Kashtayit SMCA		54.9		4.2	5.6
Naples SMCA		5.9		0.0	0.3
Control NPEAST		0.3		0.0	0.0
Control CPWEST		12.8		0.2	0.2
Campus Point SMCA		28.8		0.1	0.1
Control CPEAST		28.8		0.5	0.1
Control ABWEST		94.7		0.7	nan
Control ABEAST		82.4		0.0	nan
Control CARPW		237.4		1.0	nan
Control CARPE		204.0		2.4	nan
All MPAs Combined		33.3		0.4	0.4

MPA	Off-Shore				
	Non-Consumptive			Consumptive	
	▲	Jan 1 Dec 31	Jan 1, 2020 through Dec 31, 2020	Jan 1 Dec 31	Jan 1, 2020 through Dec 31, 2020
		All Years	♦	All Years	♦
Control KWEST		0.7		0.1	0.0
Kashtayit SMCA		9.2		0.4	0.8
Naples SMCA		10.5		0.8	0.0
Control NPEAST		2.7		0.1	0.0
Control CPWEST		2.3		0.6	0.3
Campus Point SMCA		12.4		0.2	0.1
Control CPEAST		17.0		0.7	0.2
Control ABWEST		0.3		0.0	nan
Control ABEAST		1.9		0.2	nan
Control CARPW		28.1		0.0	nan
Control CARPE		20.6		0.0	nan
All MPAs Combined		11.7		0.3	0.2

MPA	Total		
	Combined		
	▲	Jan 1 Dec 31 All Years	Jan 1, 2020 through Dec 31, 2020
Control KWEST		1.8	2.2
Kashtayit SMCA		68.8	59.1
Naples SMCA		17.2	44.4
Control NPEAST		3.2	3.9
Control CPWEST		15.9	26.2
Campus Point SMCA		41.4	82.3
Control CPEAST		47.0	51.8
Control ABWEST		95.7	nan
Control ABEAST		84.5	nan
Control CARPW		266.6	nan
Control CARPE		227.0	nan
All MPAs Combined		45.7	67.7

Notes on Calculating Incidence

The baseline rate for the reporting period was calculated by summing the total use count for each category during the same period from each previous year and dividing this value by the transect miles surveyed at each site. The miles surveyed were calculated by first identifying the length of each transect for all the MPA's in question and multiplying the length of the transect by the number of surveys that had been taken along that transect during the same time period. For MPA's with multiple transects, the total distance traveled for each transect within the MPA were summed together to get the total miles surveyed within that MPA.

MPA Watch & COVID-19

Following local, state, and federal health guidelines regarding COVID-19 and stay at home orders, Santa Barbara County's MPA Watch program suspended volunteer data collection from March 16, 2020 – May 31, 2020. Current volunteers resumed data collection on May 31, 2020. In-person trainings for new volunteers were suspended between March 16, 2020 and June 30, 2020 to adhere to physical distancing guidelines. Beaches in Santa Barbara County remained open during the initial shutdowns, although some parking areas near beach access points were closed. All Santa Barbara County beaches were closed over the Fourth of July and Labor Day holiday weekends to limit the spread of COVID-19. For these closures surfing, kayaking and other water sports were allowed, as was walking or running on the beach, but sitting, lying, standing, sunbathing, sight-seeing, picnicking, and all other non-exercise, passive or sedentary activities were prohibited.

Breakdown by MPA

Campus Point SMCA

In January-December 2020, Santa Barbara Channelkeeper Marine Protected Area (SB MPA) Watch volunteers conducted 369 land-based surveys within the Campus Point State Marine Conservation Area (SMCA) and 82 surveys outside of the MPA on the eastern and western borders.

Between January and December 2020, Santa Barbara MPA Watch data shows a rate of 82.3 total use count per total miles surveyed in the Campus Point SMCA. This rate is almost double the baseline rate of use from previous years. Survey effort was similar to past years as well, so this increase reflects a significantly higher number of activities observed. Non-consumptive activities, both on and offshore, accounted for 99.75% of all observations during 2020. The most observed shore-based activity in the Campus Point SMCA was beach recreation at 91.54% of onshore non-consumptive observations. Surfing accounted for 87.12% of all offshore non-consumptive observations. Only 0.25% of the observations were consumptive activities. Of the potential shore-based violations, seven were hook and line fishing - five in the western end of the MPA closer to the Ellwood Bluffs access point and two potential violations were closer to Coal Oil Point. There were also 7 observations of hand collection of biota.

Naples SMCA

In January-December 2020, Santa Barbara Channelkeeper Marine Protected Area (SB MPA) Watch volunteers conducted 34 surveys within the Naples State Marine Conservation Area (SMCA) and 25 surveys outside of the MPA on the eastern border.

Increased activity of both onshore and offshore was observed during 2020 at Naples compared to previous years; the total use count per mile (44.4) was more than 2.5 times higher than baseline data (17.2). Offshore non-consumptive activity accounted for 53.54% of all observations and offshore non-consumptive activities accounted for 45.70% with surfing accounting for 89.86% of the observed offshore activity. Throughout the year increased beach recreation was observed on the walk out to the bluff transect, but was not always captured in the surveys as the people were not on the beach at the time the survey was conducted. One potential violation of shore-based hook and line fishing was observed.

Kashtayit SMCA

In January-December 2020, Santa Barbara Channelkeeper Marine Protected Area (SB MPA) Watch volunteers conducted 76 surveys within the Kashtayit State Marine Conservation Area (SMCA) at Gaviota State Beach and along the western end of the MPA and 37 surveys outside of the MPA on the western side.

SB MPA Watch volunteers observed mostly onshore beach recreation; 73.30% of all activity observed at Kashtayit were onshore non-consumptive activities. The onshore consumptive activities include 55 observations of hook and line fishing and 12 observation of recreational hook and line fishing offshore (7.45% of all observed activities at this site). Kashtayit SMCA allows for the recreational take of most species except for mussels and scallops. No potential violations were observed. In addition to the Santa Barbara County holiday beach closures, the beach at Gaviota State Beach was closed briefly in May due to a fire just to the west of the beach.

Santa Barbara County MPAs January – December 2020 Boat-based Surveys

In addition to the land-based MPA Watch surveys, Santa Barbara Channelkeeper staff also conducts offshore surveys from the Research Vessel *Channelkeeper* of Campus Point and Naples MPAs as well as control sites for two miles on the eastern and western areas adjacent to the Campus Point and Naples MPAs.

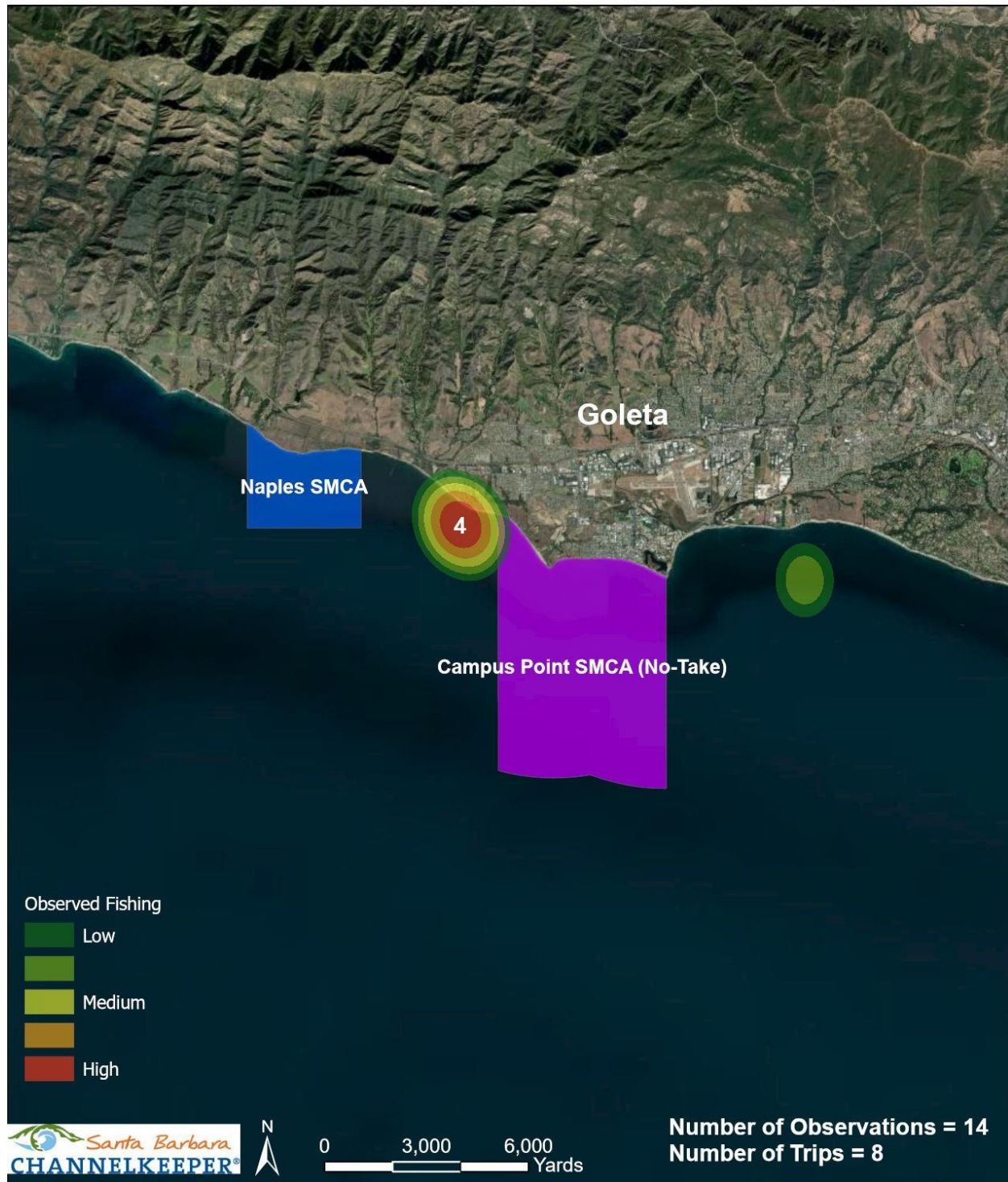
Channelkeeper aims to conduct two boat surveys of coastal MPAs per month onboard our research vessel, weather and conditions permitting. Due to stay-at-home orders during the January –December 2020 time period, fewer boat surveys were conducted than planned as Channelkeeper staff followed the orders.

On the following pages are heat maps looking at all fishing activity observed during the January – December 2020 time period and additional maps looking at only commercial fishing activity and only recreational fishing activity observed on the 14 coastal survey trips. Two potential violations were observed during these survey trips, both were recreational boat hook and line fishing at the Naples SMCA. The majority of the recreational fishing observations east of the Campus Point MPA in the control survey are hook and line fishing from the Goleta Pier.

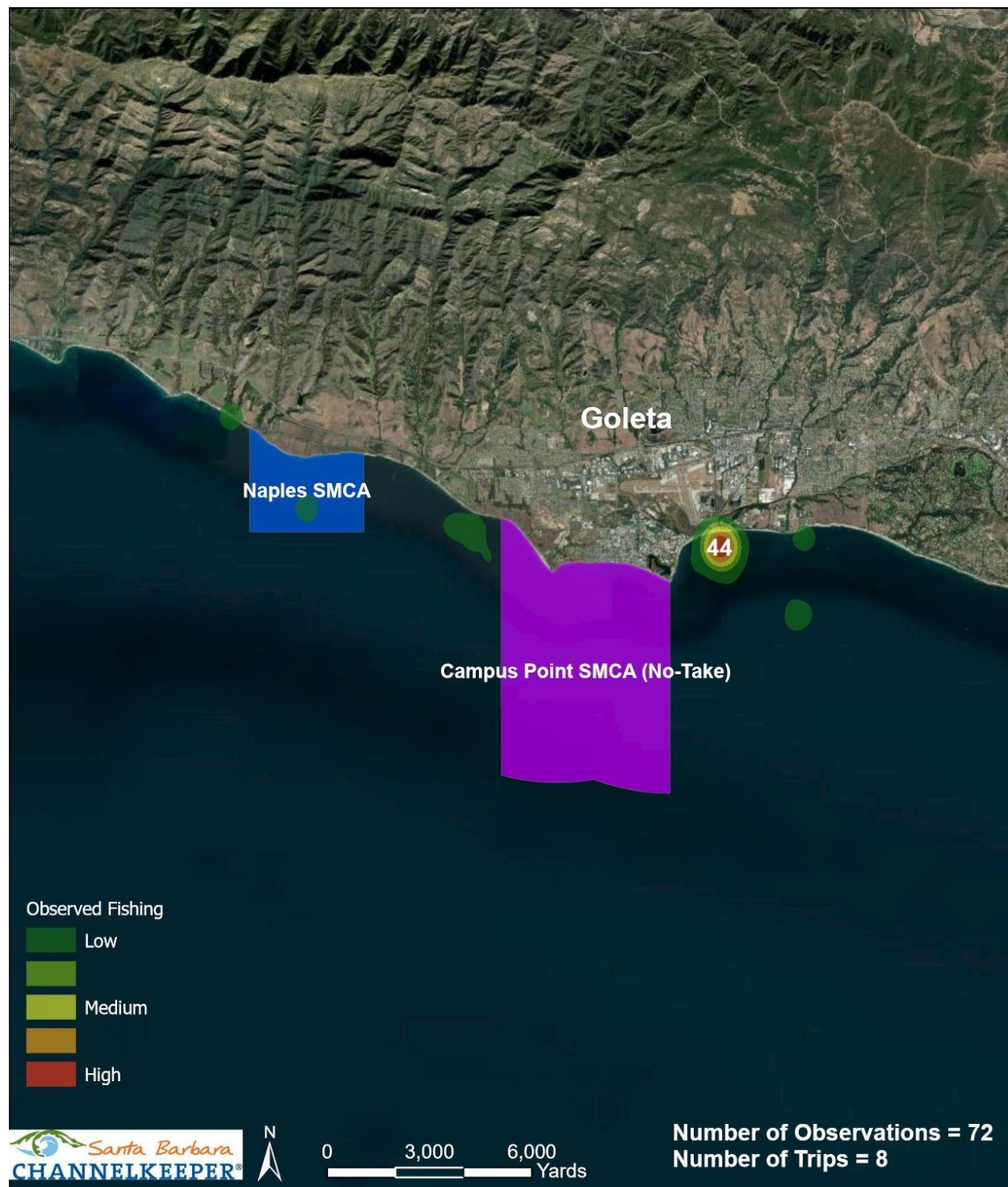
During this time period Channelkeeper also launched MPA Watch surveys at the northern Channel Islands including Santa Cruz and Santa Rosa Islands. Surveys were conducted in the following MPAs as well as control surveys adjacent to the MPAs: Painted Cave SMCA, Carrington Point SMR, Skunk Point SMR, Gull Island SMR, Footprint SMR, and Scorpion SMR. Due to challenges with the stay-at-home orders and weather conditions, we were only able to conduct 9 boat surveys at Santa Cruz Island and eastern Santa Rosa Island. No potential violations were observed during these survey trips. Surveys conducted over the summer saw increased recreational fishing activity compared to winter months. Following the coastal MPA

heat maps is a heat map of all fishing activity observed during surveys at the northern Channel Islands.

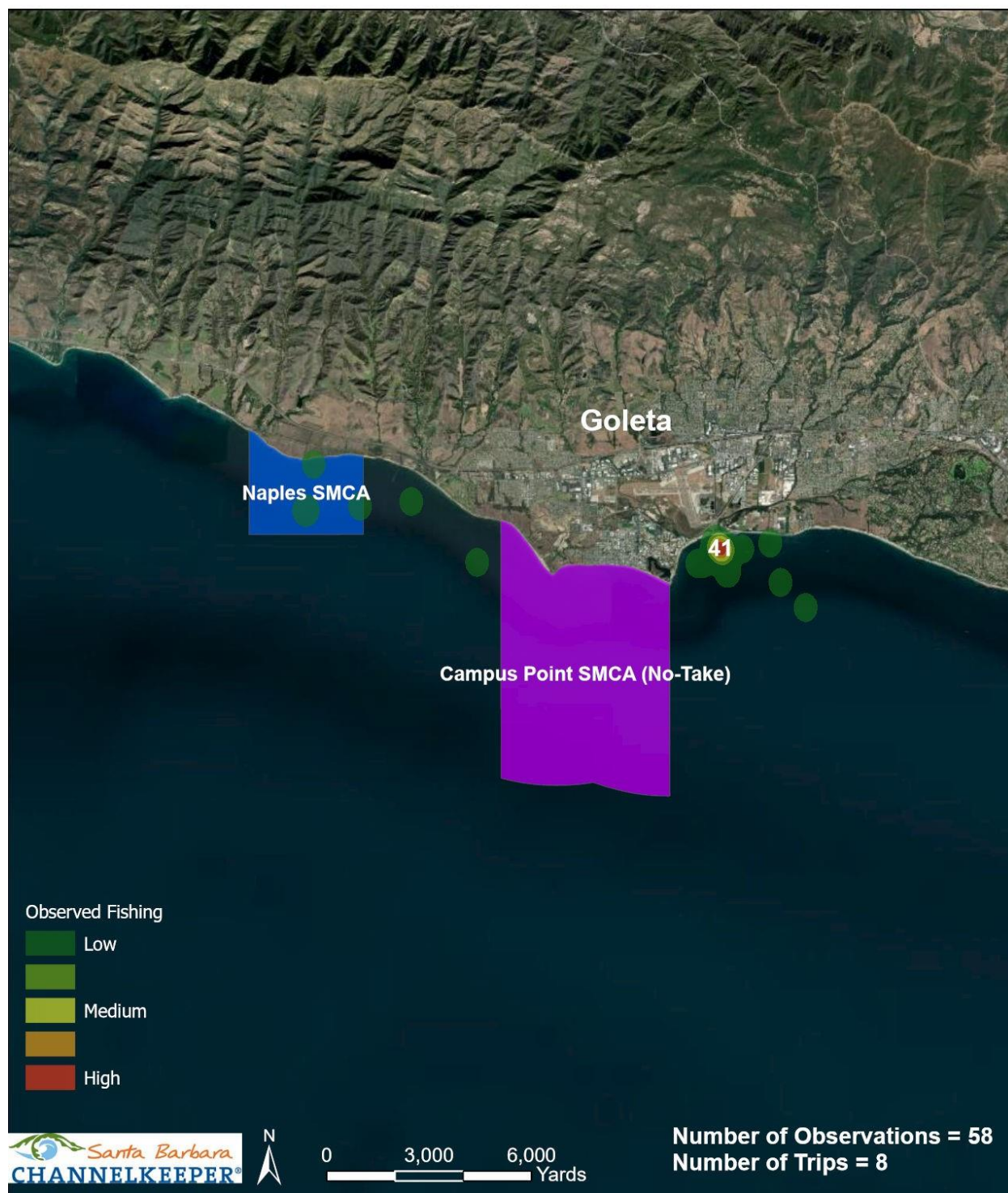
July - Dec 2020 Commercial Fishing Activity Santa Barbara



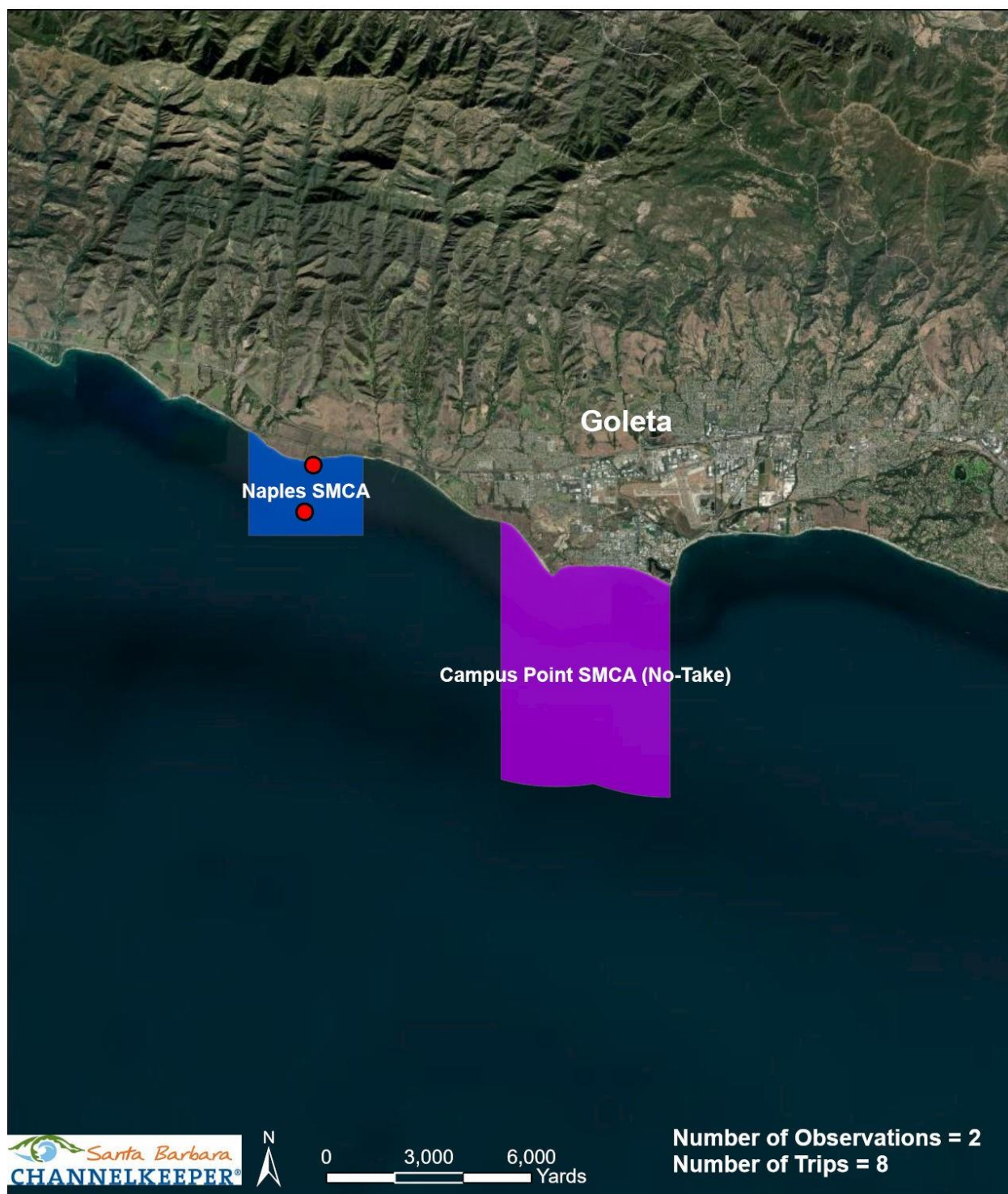
July - Dec 2020 All Fishing Activity Santa Barbara



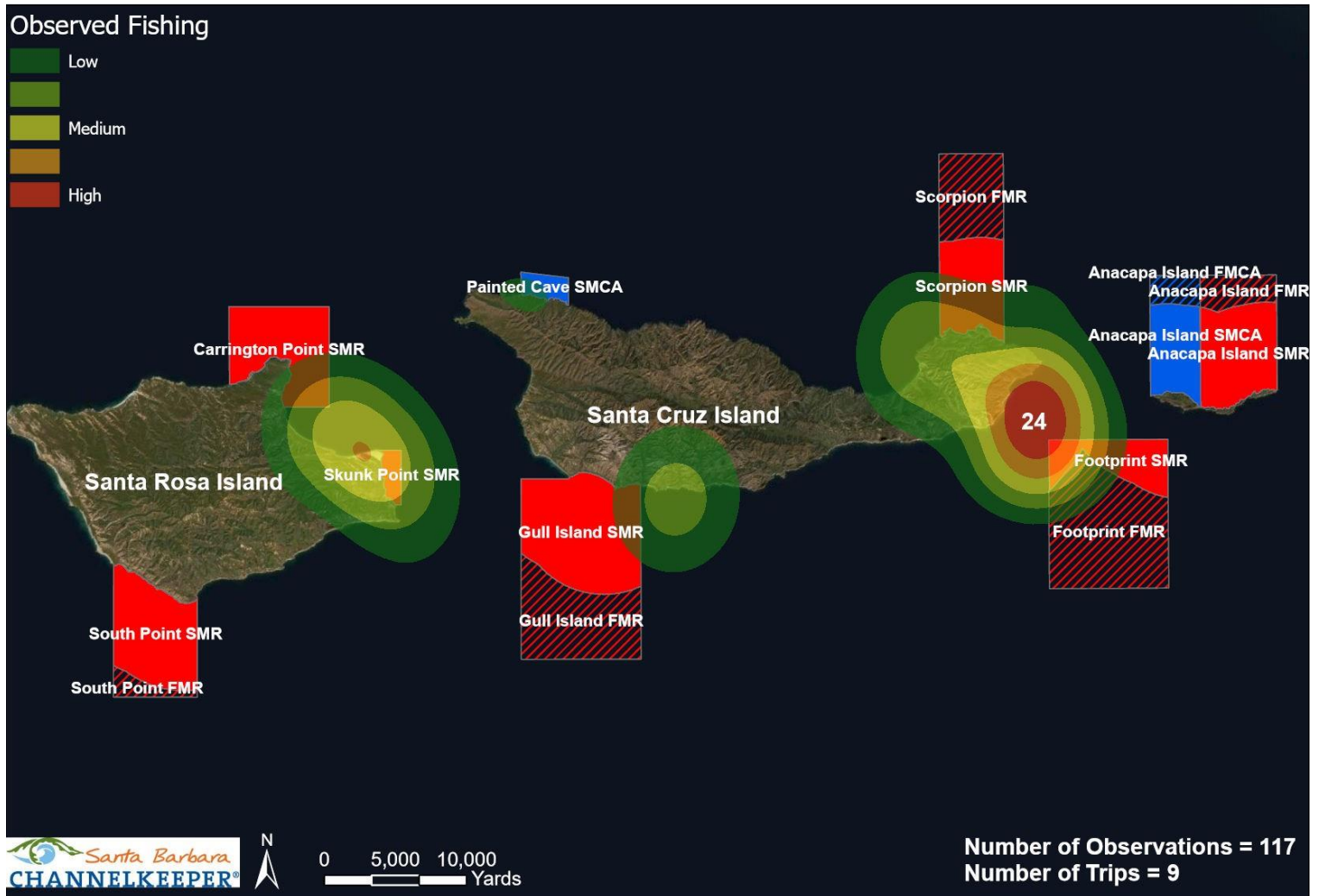
July - Dec 2020 Recreational Fishing Activity Santa Barbara



July - Dec 2020 Reported Violations Santa Barbara



Jan - Dec 2020 All Fishing Activity Channel Islands



Potential Violations

Rate of consumptive activities observed in Kashtayit, Naples, and Campus Point MPAs remains relatively low accounting for 0.73% of all observations recorded by shore-based surveys. In the Campus Point (No-Take) SMCA, shore-based MPA Watch volunteers observed seven potential violations of hand collection of biota and seven potential shore-based hook and line fishing violations. Five of the potential violations of shore-based hook and line fishing were observed in the western end of the Campus Point MPA, where we have seen potential violations in past years. The other two potential hook and line violations were observed in the middle of the MPA near Coal Oil Point, an area with easy public access. We also received reports from community members not conducting MPA Watch surveys of recreational boats fishing hook and line in the No-Take Campus Point SMCA over the summer months. During two separate boat-based surveys over the summer we also observed recreational boats hook and line fishing in the Naples SMCA. Even if the noncompliance rate is low, it is important to note that any illegal take from MPAs jeopardizes the success of the MPA and health of the ecosystems which they protect.

Next Steps

Channelkeeper will continue to educate and train new MPA Watch volunteers to conduct shore-based surveys at the three coastal MPAs in southern Santa Barbara County and have adapted training materials to be completed virtually. As stay-at home orders and weather permits, we will also conduct boat-based surveys of the coastal MPAs at Campus Point and Naples SMCAs and at eight of the MPAs in the Northern Channel Islands (Carrington Point SMR, Skunk Point SMR, Gull Island SMR, Footprint SMR, Anacapa Island SMR and SMCA, Scorpion SMR, and Painted Cave SMCA).

Additional Information

For additional information on MPA Watch, including survey sites, participating organizations, protocols and datasheets, media kit, and how to get involved, please visit mpawatch.org. Connect with MPA Watch on social media @MPAWatchOrg.

For additional information regarding MPAs and regulations specific to the various classifications of MPAs please visit wildlife.ca.gov/MPAs. If you see an activity that violates MPA regulations, please call CalTip to report the violation at (888)-334-2258.

For more information about the work Santa Barbara Channelkeeper does to protect and restore the Santa Barbara Channel and its watersheds, including to monitor and build support for local MPAs, please visit sbck.org.