



**Marine Protected Area (MPA) Watch
2020 Regional Report
Los Angeles Waterkeeper's Boat-Based Survey Report
Los Angeles County Mainland –
January 2020 – December 2020**



Los Angeles Waterkeeper (LAW) has conducted boat-based surveys of all boating activity as well as all on the water and onshore fishing activities in and around the 2 mainland LA County MPA's at Point Dume MPA In Malibu and the Point Vicente/Abalone Cove MPAs in Palos Verdes regularly since 2012.

LAW's transects extend beyond the boundaries of our MPAs to monitor control sites 2 miles up and down shore of the MPA boundaries. Other onshore and recreational activities covered by land-based surveys are not documented. LAW's efforts complement the LA County mainland land-based surveys conducted by Heal the Bay.

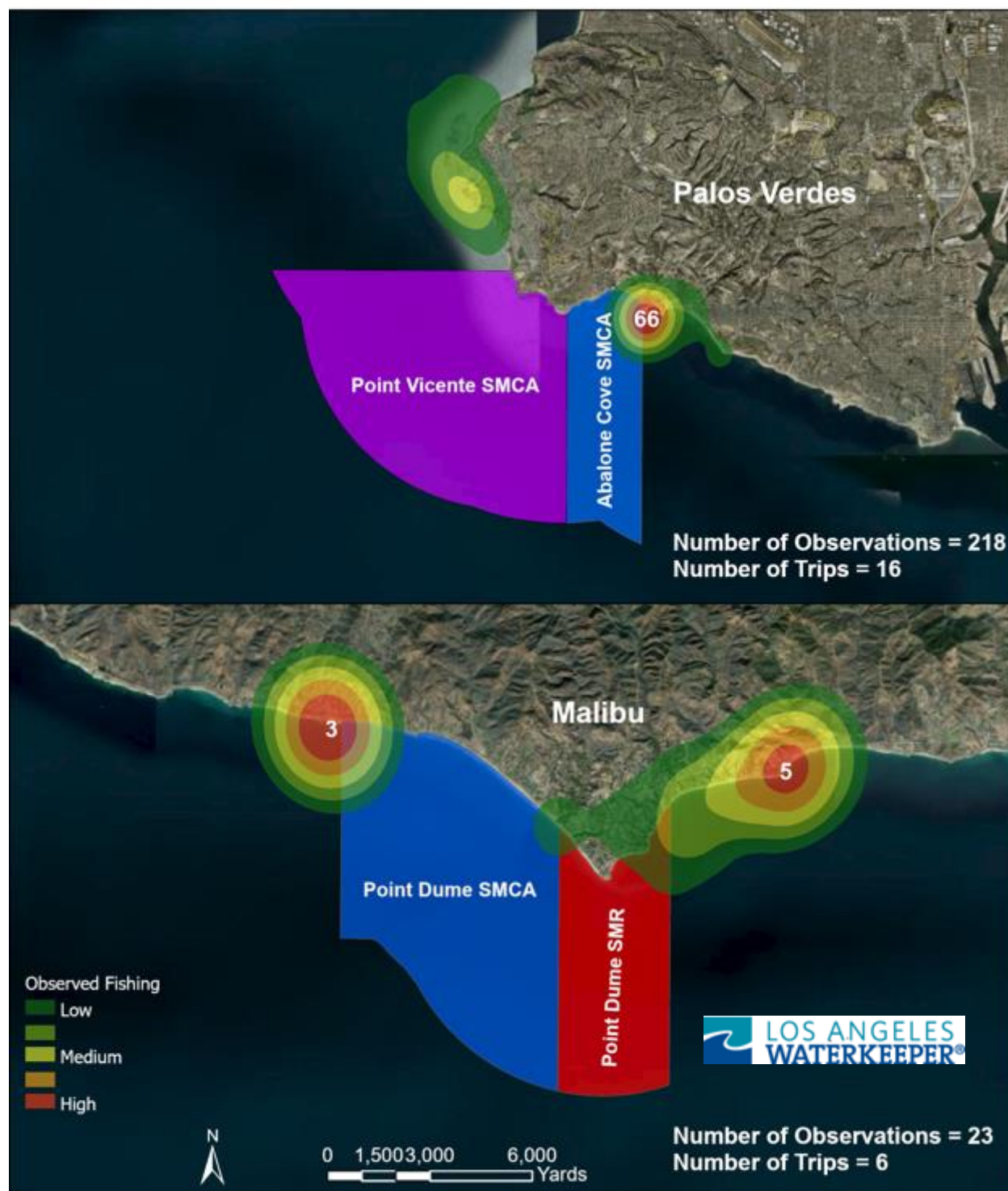
LAW shares MPA boat-based survey data with CDFW, various universities, high schools, and interested organizations, as well as in our volunteer corps including students from our indigenous, Latinx, at risk and often underserved communities.

LAW provides MPA Watch data and MPA outreach and education information for academic MPA projects.

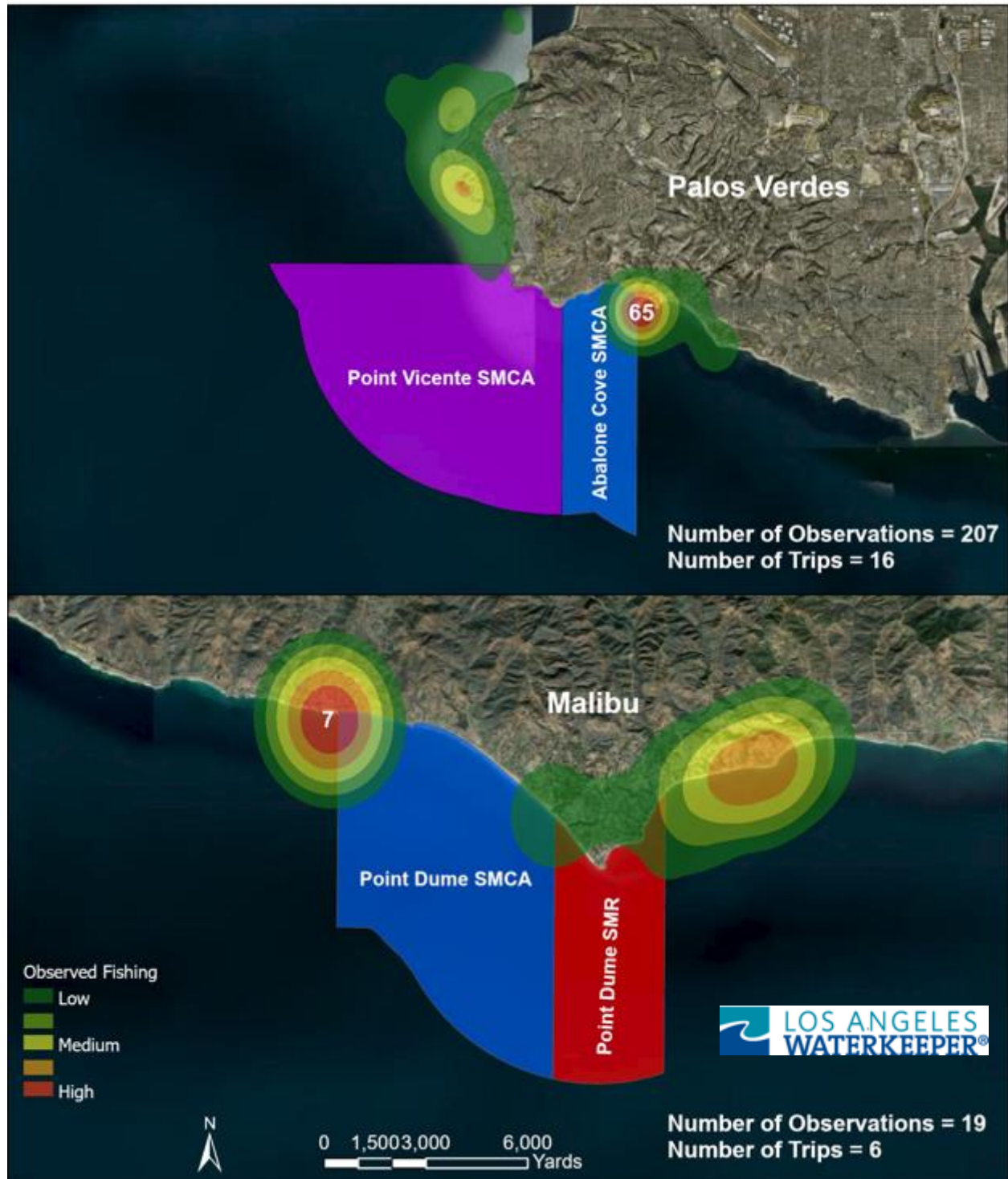
Executive Summary

- COVID-19 certainly influenced our MPA Watch Boat-Based Survey program at LA Waterkeeper. Waterkeeper and volunteer participation in LAW's boat-based survey program was suspended indefinitely in March 2020 due to the pandemic.
- Fishing effort and the number of probable violations observed per fishing effort was higher in 2020 than any other MPA survey year since our first year in 2012.
- LAW responded to the onslaught of new boat owners and fishers who took to the water during the pandemic in 2020. After discussion with funders and colleagues, LAW's increased scheduled surveys up from 60-65 to include 75-80 mainland LA boat-based surveys.
- 80 surveys were conducted with one survey aborted early on due to the tenacity of extremely dense and hazardous fog, up from 60 surveys completed in 2019.
- A dramatic increase of both on-the-water and onshore fishing and hand take from MPA tidepools was noted after LA County COVID-19 restrictions relaxed a bit in late May 2020.
- Only LAW staff manned the Waterkeeper boat from May 2020 thru December 2020 conducting surveys. LAW increased it's time spent in MPAs after the survey offering on-the-water, boat-to-boat outreach and education opportunities to fishers - especially those fishing illegally from vessels while inside the boundaries of our MPAs.
- LAW increased our number of days on the water as our presence is considered essential work dedicated to raising awareness of MPAs and to understand the human response to the COVID-19 virus. LAW spent additional hours out on the water actively conducting boat to boat outreach and education post surveys.
- Hand-take from tidepools inside our MPAs had not been observed during prior LAW boat-based surveys conducted January 2012- into early 2020.
- LAW's Marine Programs Director, Michael Quill, oversees every LAW boat-based survey and report all possible/potential violations observed occurring onshore and offshore to CalTip from the water, at the time of observance.
- Probable onshore violations observed inside the Pt. Vicente/ Abalone Cove MPAs were also reported to the Rancho Palos Verdes Rangers via text or phone.

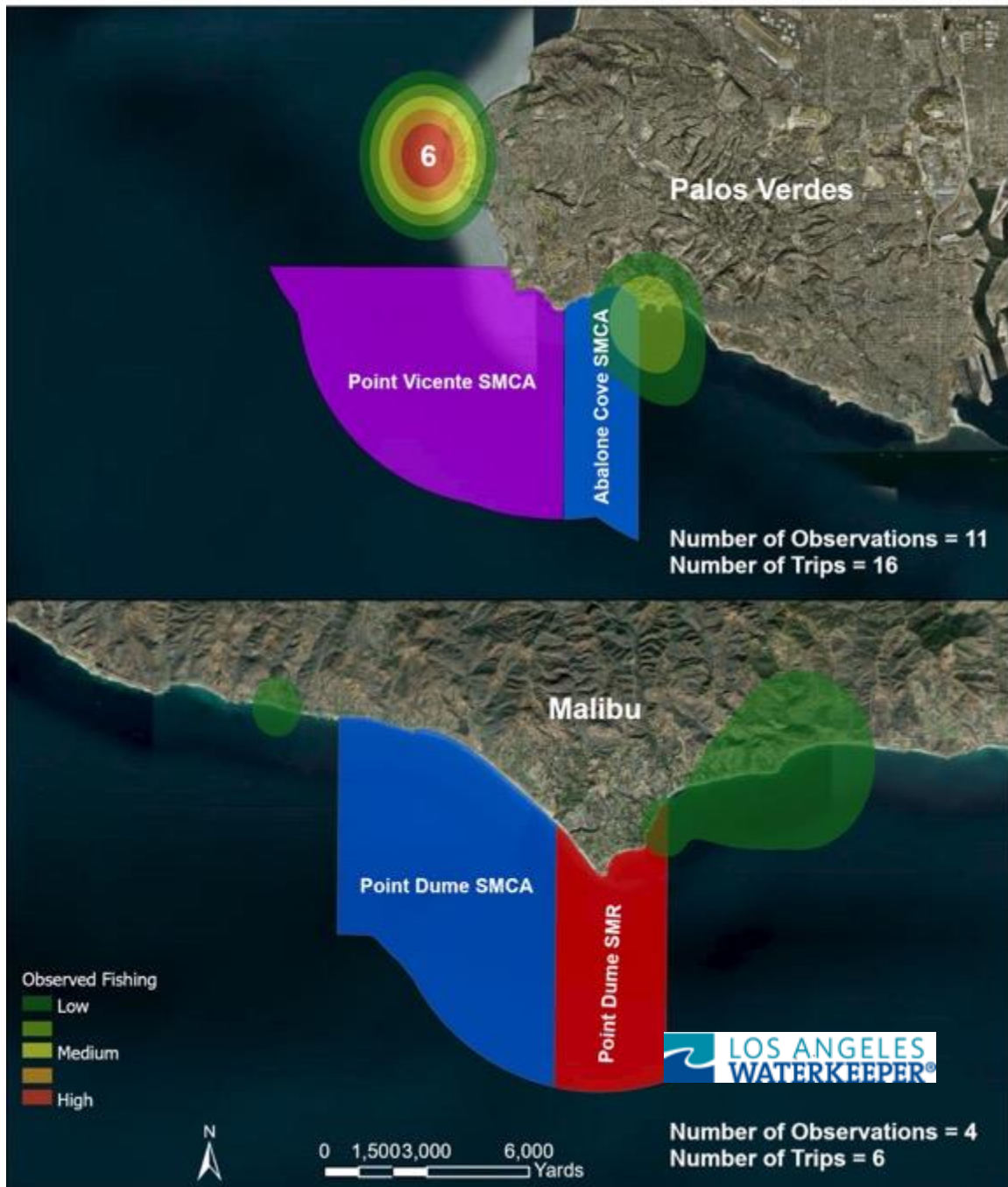
Jan - June 2020 All Fishing Activity Palos Verdes and Malibu



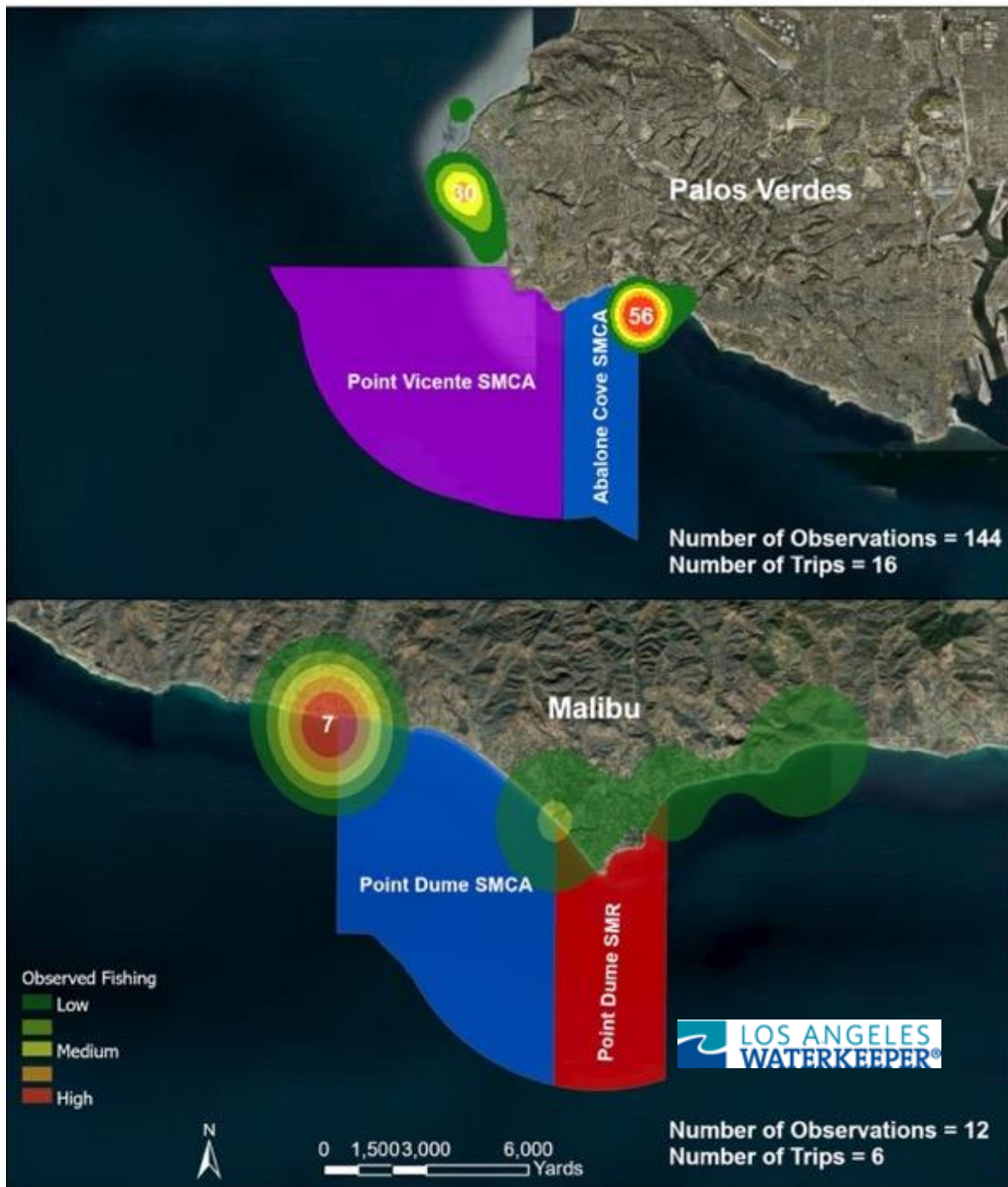
Jan - June 2020 Recreational Fishing Activity Palos Verdes and Malibu



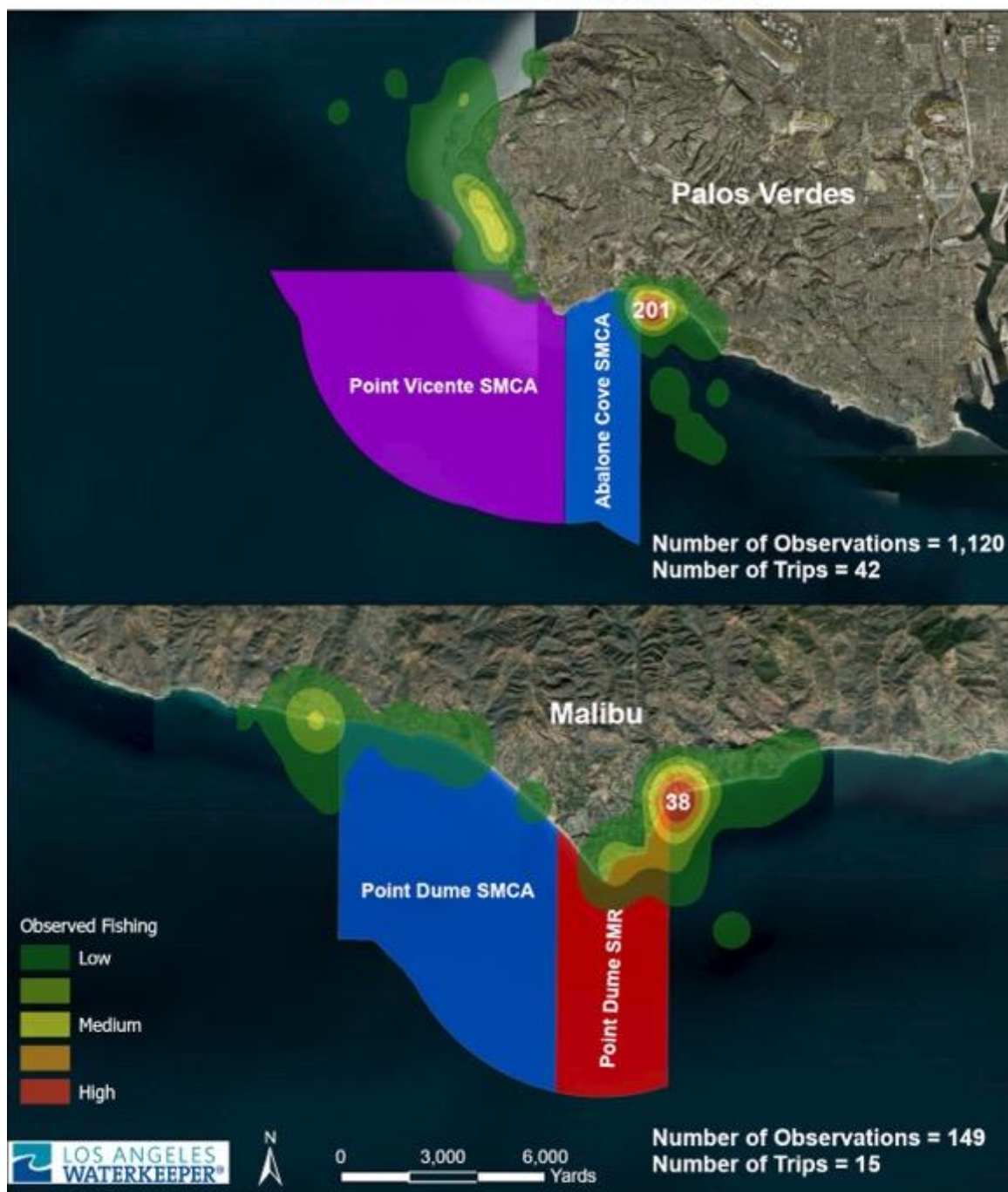
Jan - June 2020 Commercial Fishing Activity Palos Verdes and Malibu



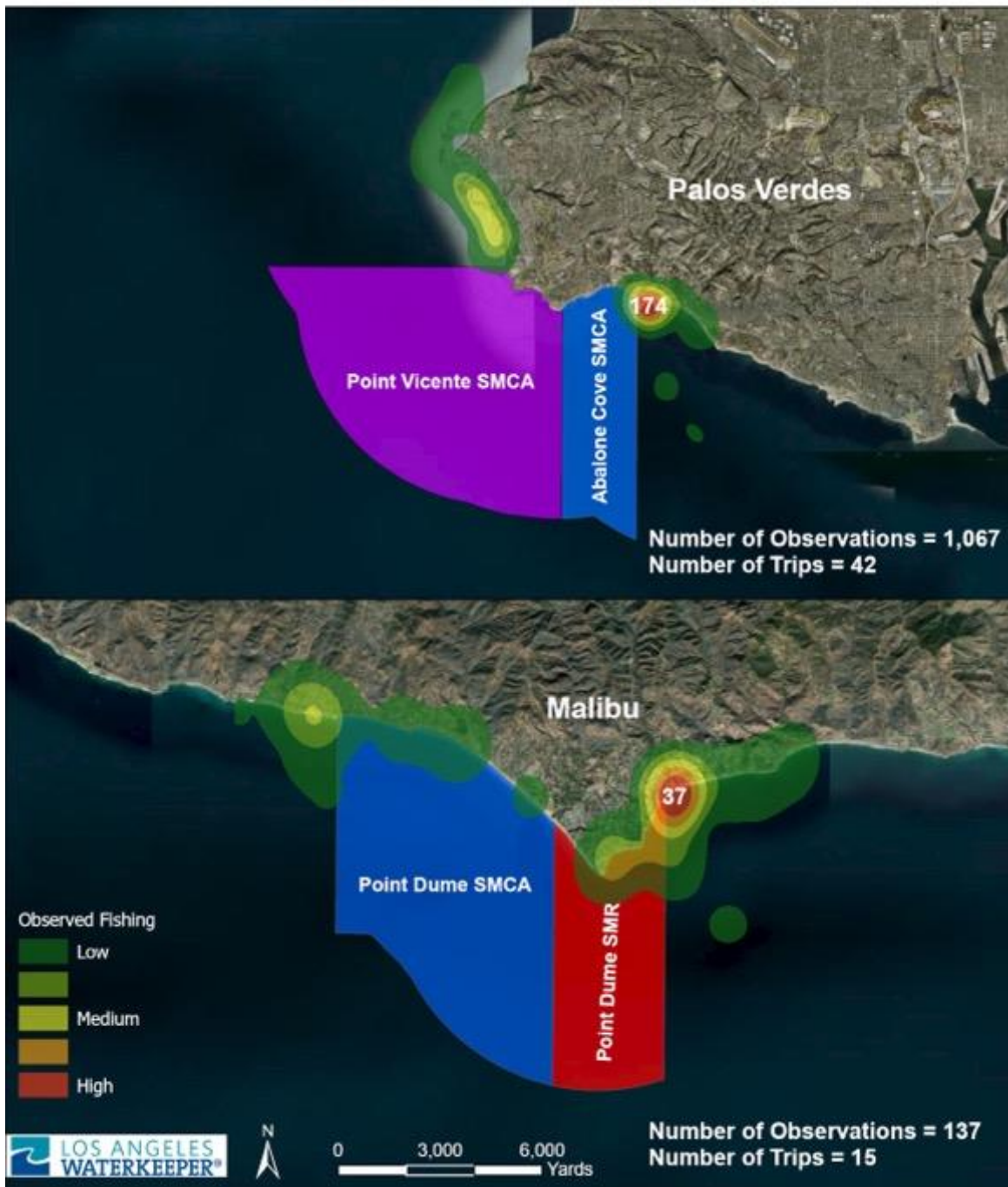
Jan - June 2020 Onshore Fishing Activity Palos Verdes and Malibu



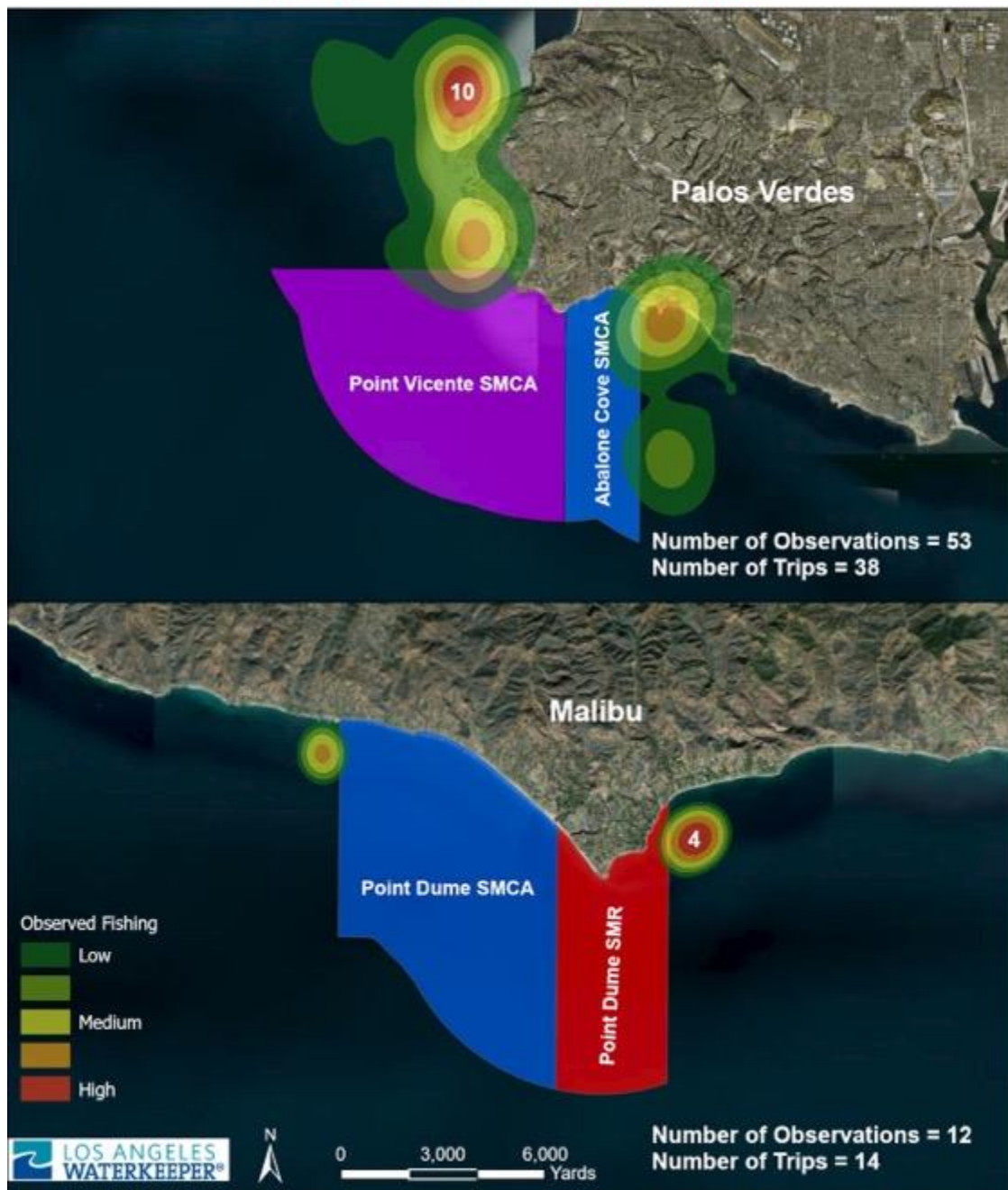
July - Dec 2020 All Fishing Activity Palos Verdes and Malibu



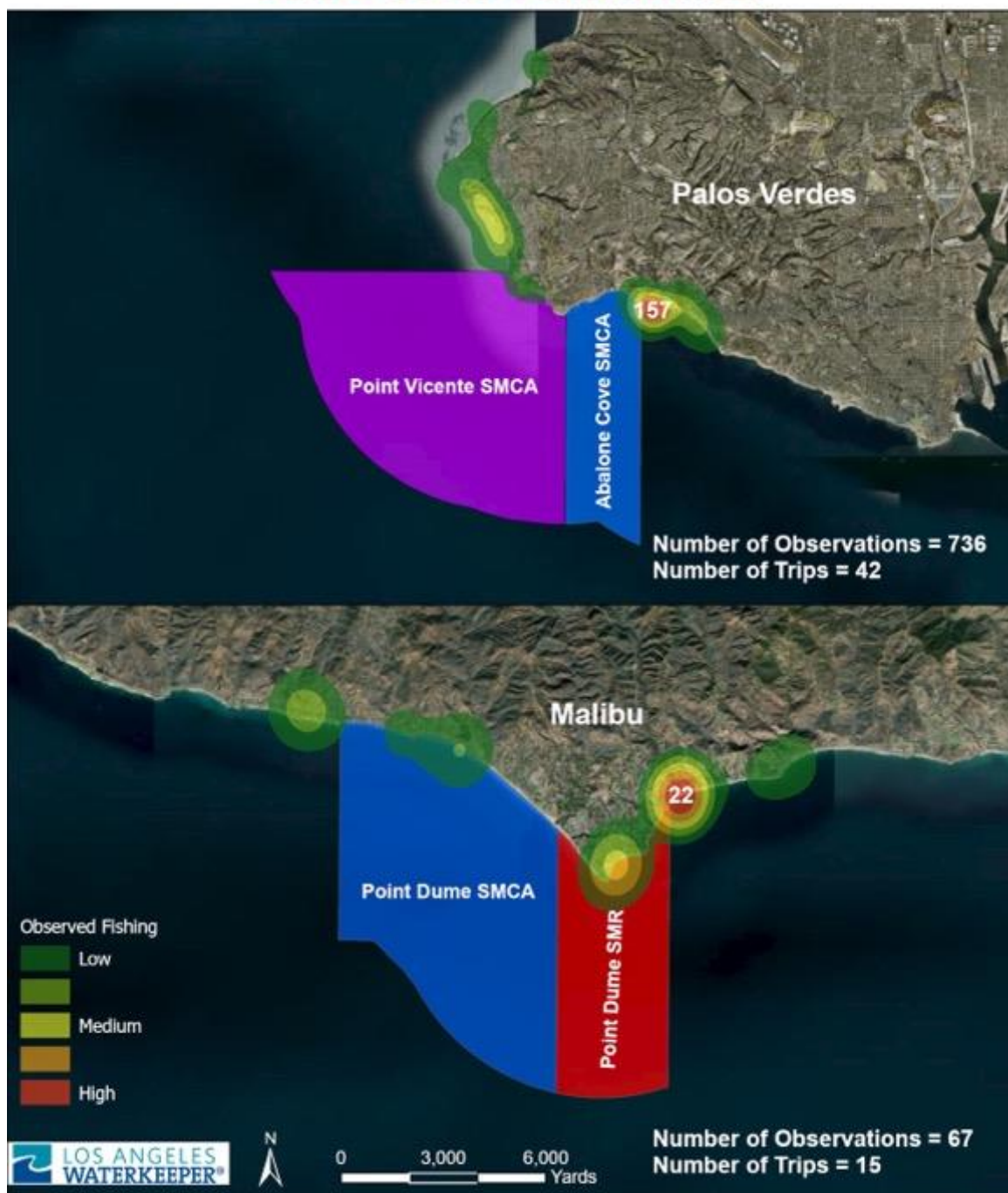
July - Dec 2020 Recreational Fishing Activity Palos Verdes and Malibu



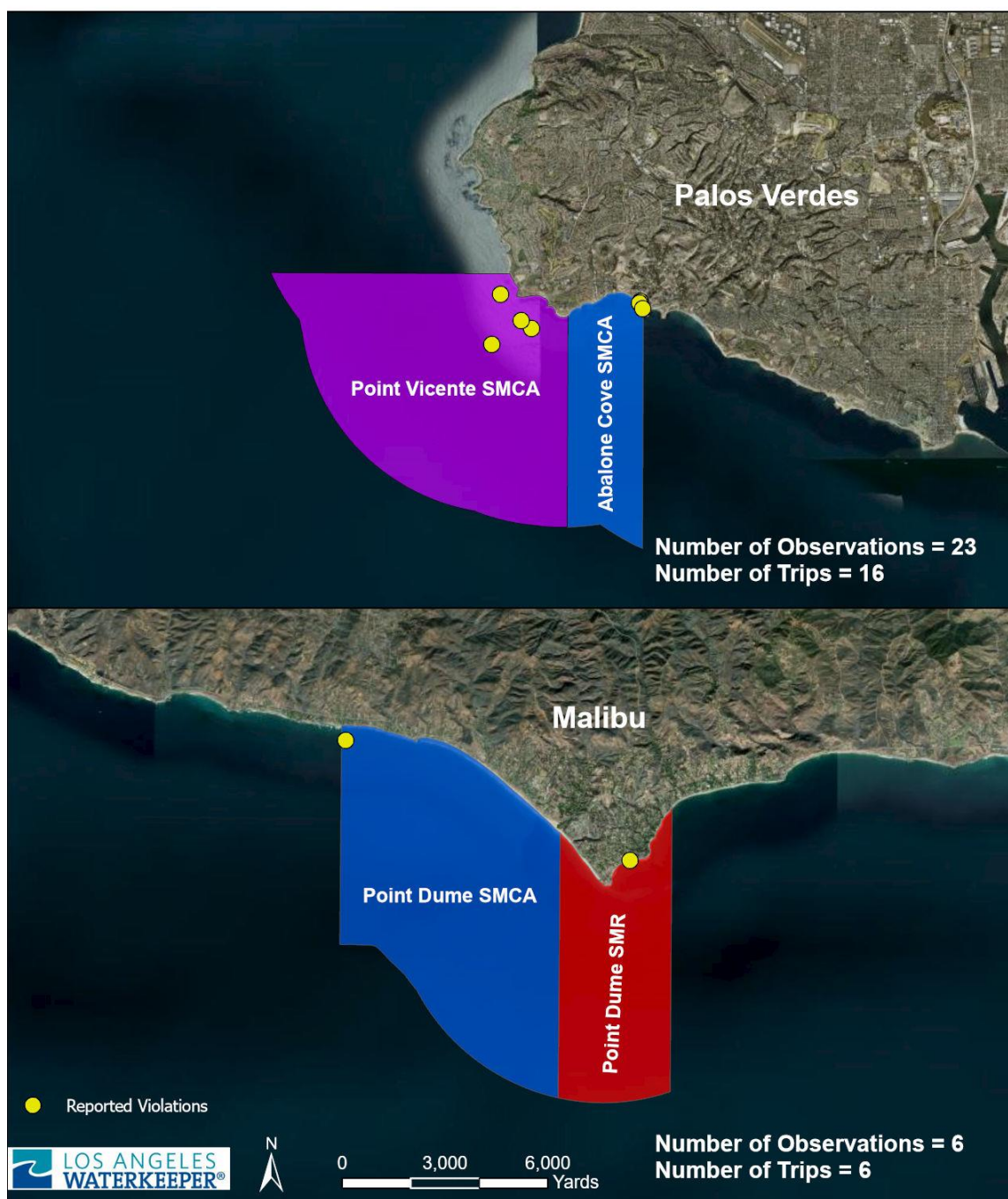
July - Dec 2020 Commercial Fishing Activity Palos Verdes and Malibu



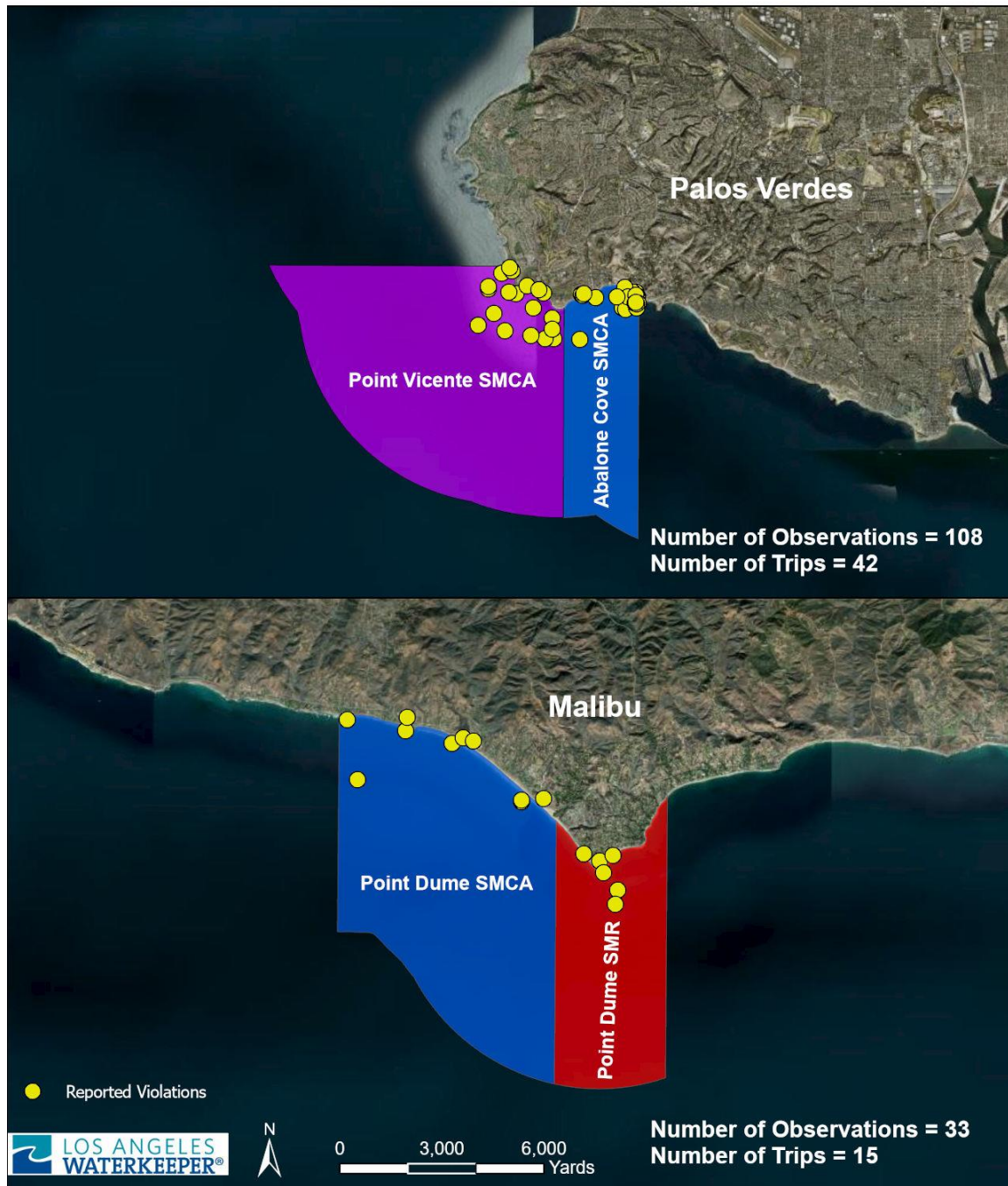
July - Dec 2020 Onshore Fishing Activity Palos Verdes and Malibu



Jan - June 2020 Reported Violations Palos Verdes and Malibu



July - Dec 2020 Reported Violations Palos Verdes and Malibu





Marine Protected Area (MPA) Watch 2020 Regional Report

RECORD OF 170 POTENTIAL MPA VIOLATIONS REPORTED BY LAW IN 2020

63 CalTip Calls & 10 Re-Calls – 16 Calls or Texts to PV Park Ranger

MPA	Date	Time	Latitude	Longitude	Vessel Type	Vessel	Activity	Quantity	Reporting Notes
Point Vicente SMCA	2/8/20	12:31	33.73870316	-118.4161257	Recreational	Sport Fishing Boat	Fishing	1	CalTip Called, Made Contact- MPA Guides
Point Dume SMCA	2/15/20	13:26	34.03475443	-118.8830688	Recreational	On Shore - Rocky	Fishing	4	CalTip Called
Abalone Cove SMCA	5/26/20	11:47	33.73795145	-118.3758908	Recreational	On Shore - Sandy	Fishing	2	CalTip Called
Point Dume SMR	5/26/20	13:28	34.0189146	-118.8182945	Recreational	On Shore - Sandy	Fishing	2	CalTip Called
Point Vicente SMCA	6/12/20	12:37	33.72970268	-118.4204208	Recreational	Sport Fishing Boat	Fishing	1	CalTip Called, Made Contact - MPA Guides
Point Vicente SMCA	6/12/20	12:44	33.71066219	-118.4326704	Recreational	Jet Ski	Fishing	2	CalTip Called, Made Contact - MPA Guides
Point Vicente SMCA	6/24/20	12:05	33.73785751	-118.4102221	Recreational	Power Boat	Fishing	1	CalTip Called, Made Contact - MPA Guides
Abalone Cove SMCA	6/26/20	11:39	33.7377533	-118.3760338	Recreational	On Shore - Rocky	Fishing	3	CalTip Called. & RPV Ranger contacted
Abalone Cove SMCA	6/26/20	11:40	33.73519441	-118.3773263	Recreational	On Shore - Rocky	Fishing	20	CalTip Called R& PV Ranger contacted call/text
Point Vicente SMCA	7/2/20	12:47	33.74158035	-118.415318	Recreational	Power Boat	Fishing	1	CalTip Called, Made Contact - MPA Guides
Abalone Cove SMCA	7/10/20	09:40	33.73760887	-118.3779315	Recreational	On Shore - Rocky	Fishing	3	CalTip & Ranger called - Tide pool take
Point Vicente SMCA	7/24/20	11:41	33.7498108	-118.4135795	Recreational	Power Boat	Fishing	1	CalTip - Jennifer -dispatch-made contact maps
Point Dume SMCA	8/1/20	11:02	34.02880679	-118.8504813	Recreational	On Shore - Rocky	Fishing	5	CalTip Called, Made Contact - MPA Guides
Point Dume SMCA	8/1/20	11:35	34.0335926	-118.8640646	Recreational	Kayak	Fishing	2	CalTip Called, Made Contact - MPA Guides
Point Dume SMCA	8/1/20	11:49	34.03541024	-118.8809423	Recreational	Power Boat	Fishing	1	CalTip Called, Made Contact - MPA Guides
Point Dume SMR	8/8/20	11:09	33.99356278	-118.8073783	Recreational	Power Boat	Fishing	1	CalTip Called, Made Contact - MPA Guides

Point Dume SMCA	8/8/20	11:49	34.05037081	-118.8241143	Recreational	Kayak	Fishing	1	CalTip Called, Made Contact - MPA Guides
Point Dume SMCA	8/15/20	11:31	34.03444261	-118.8614591	Recreational	On Shore - Rocky	Fishing	18	CalTip Called, - Hand Take Groups
Point Dume SMCA	8/15/20	15:15	34.01754407	-118.8310626	Recreational	Kayak	Fishing	1	CalTip Called, Made Contact - MPA Guides
Point Dume SMCA	8/22/20	13:48	34.03573195	-118.8633156	Recreational	On Shore-Sandy	Fishing	3	CalTip Called
Point Vicente SMCA	8/23/20	12:00	33.71505113	-118.4152542	Recreational	Power Boat	Fishing	1	CalTip Called, Made Contact - MPA Guides
Point Vicente SMCA	8/23/20	12:06	33.73901894	-118.4177405	Recreational	Sport Fishing Boat	Fishing	1	CalTip Called, Made Contact - MPA Guides
Point Vicente SMCA	8/23/20	12:08	33.74031902	-118.4170853	Recreational	Power Boat	Fishing	1	CalTip Called, Made Contact - MPA Guides
Abalone Cove SMCA	8/23/20	12:10	33.72901709	-118.3952812	Recreational	Sport Fishing Boat	Fishing	1	CalTip Called, Made Contact - MPA Guides
Point Vicente SMCA	8/23/20	12:23	33.70543448	-118.4091309	Recreational	On Shore - Rocky	Fishing	3	CalTip Called
Point Vicente SMCA	8/23/20	12:31	33.73419371	-118.4022169	Recreational	Power Boat	Fishing	1	CalTip Called, Made Contact - MPA Guides
Abalone Cove SMCA	8/23/20	12:54	33.73595178	-118.3778074	Recreational	Power Boat	Fishing	1	CalTip Called, Made Contact - MPA Guides
Abalone Cove SMCA	8/30/20	11:23	33.73912435	-118.375539	Recreational	On Shore - Rocky	Fishing	2	CalTip Called
Abalone Cove SMCA	8/30/20	12:03	33.73715134	-118.3929526	Recreational	On Shore - Rocky	Fishing	4	CalTip called & Rangers texted/called
Abalone Cove SMCA	8/30/20	12:16	33.70293144	-118.3909285	Recreational	Power Boat	Fishing	1	CalTip Called, Made Contact - MPA Guides
Abalone Cove SMCA	9/5/20	11:33	33.73839033	-118.382593	Recreational	Kayak	Fishing	1	CalTip – Response from by DFW Doug
Abalone Cove SMCA	9/5/20	11:36	33.74008977	-118.3909339	Recreational	Power Boat	Fishing	1	CalTip – Response from DFW Doug
Point Dume SMR	9/6/20	12:11	33.96307442	-118.7991972	Recreational	Power Boat	Fishing	1	CalTip Called
Point Vicente SMCA	9/12/20	12:43	33.74122527	-118.4212001	Recreational	Sport Fishing Boat	Fishing	1	CalTip Called
Point Vicente SMCA	9/12/20	12:55	33.73670064	-118.4085355	Recreational	Sport Fishing Boat	Fishing	1	CalTip Called
Abalone Cove SMCA	9/12/20	13:47	33.73981051	-118.3915822	Recreational	on Shore - Rocky	Fishing	3	CalTip Called & Ranger Texted
Point Vicente SMCA	9/20/20	11:22	33.7339845	-118.4034923	Recreational	Sport Fishing Boat	Fishing	1	CalTip Called
Point Vicente SMCA	9/20/20	11:28	33.74467458	-118.4192904	Recreational	Sport Fishing Boat	Diving	1	CalTip Called – Diver with lobster
Point Vicente SMCA	9/20/20	11:32	33.70480672	-118.4136199	Recreational	Power Boat	Fishing	1	CalTip Called
Point Vicente SMCA	9/20/20	11:44	33.73915773	-118.4115101	Recreational	On Shore - Rocky	Fishing	3	CalTip Called

Abalone Cove SMCA	9/20/20	12:11	33.73968179	-118.38915	Recreational	Power Boat	Fishing	1	CalTip Called
Point Vicente SMCA	9/27/20	12:06	33.73915773	-118.4115101	Recreational	On Shore - Rocky	Fishing	6	CalTip & Ranger called – Norma Text
Abalone Cove SMCA	9/27/20	12:14	33.73493016	-118.3766975	Recreational	Power Boat	Fishing	1	CalTip Called & Ranger Called
Abalone Cove SMCA	10/2/20	11:19	33.73926231	-118.3957298	Recreational	Power Boat	Fishing	1	CalTip Called & Ranger – Norma Text
Point Vicente SMCA	10/3/20	12:30	33.71298489	-118.402185	Recreational	On Shore - Rocky	Fishing	6	CalTip Called & Ranger Called
Point Dume SMR	10/10/20	11:56	34.0020601	-118.80434	Recreational	On Shore - Rocky	Fishing	2	CalTip Called
Point Dume SMR	10/10/21	13:09	34.02968749	-118.8487693	Recreational	Power Boat	Fishing	1	CalTip Called - Made contact
Point Vicente SMCA	10/11/20	10:12	33.70212176	-118.4248794	Recreational	Power Boat	Fishing	1	CalTip Called at 10:10.
Point Vicente SMCA	10/11/20	10:24	33.67166402	-118.4248277	Recreational	On Shore - Rocky	Fishing	2	CalTip Called & Ranger Palos Verdes Call.
Abalone Cove SMCA	10/11/20	10:47	33.73985963	-118.3765283	Recreational	On Shore - Rocky	Fishing	14	CalTip Called & Ranger Palos Verdes Call.
Point Vicente SMCA	10/23/20	13:07	33.66698649	-118.4685061	Recreational	Power Boat	Fishing	1	CalTip Called - Contact Made - Maps
Point Dume SMR	10/25/20	9:44	34.02620429	-118.8088133	Recreational	On Shore - Sandy	Fishing	1	Ranger Called - Kory & CalTip Called
Abalone Cove SMCA	10/30/20	12:59	33.73963635	-118.3912443	Recreational	On Shore - Rocky	Fishing	2	CalTip Called
Abalone Cove SMCA	11/15/20	14:46	33.73503627	-118.3829397	Recreational	On Shore - Rocky	Fishing	4	CalTip Called & Ranger – Norma Texted
Abalone Cove SMCA	11/22/20	12:29	33.7393512	-118.380911	Recreational	Sailboat	Fishing	1	CalTip Called - Fog -Contact- Maps- MPA coloring books
Point Dume SMR	12/5/20	12:45	33.9977122	-118.8062453	Recreational	On Shore - Sandy	Fishing	3	CalTip
Point Dume SMCA	12/5/20	12:54	34.01462392	-118.8301356	Recreational	On Shore - Sandy	Fishing	1	CalTip - Warden Bagdamarian Called Back
Point Dume SMR	12/13/20	9:33	33.9743824	-118.8036958	Recreational	On Shore - Rocky	Fishing	4	CalTip - Bagdamarian - contact onshore - cell
Point Dume SMCA	12/13/20	9:48	34.03006739	-118.8442087	Recreational	On Shore - Rocky	Fishing	2	CalTip, Called -Warden Bagdamarian called
Point Vicente SMCA	12/20/20	14:46	33.70001257	-118.4039916	Recreational	On Shore - Rocky	Fishing	3	CalTip Called & Ranger Palos Verdes call.
Point Vicente SMCA	12/26/20	11:31	33.72226578	-118.4301453	Recreational	Power Boat	Fishing	1	CalTip Called - Made Contact -Maps etc.
Abalone Cove SMCA	12/26/20	11:47	33.73755188	-118.3756071	Recreational	On Shore - Rocky	Fishing	8	CalTip Called & Ranger Palos Verdes Texted
Point Vicente SMCA	12/30/20	11:35	33.7449754	-118.4186185	Recreational	Power Boat	Fishing	1	CalTip Called - Made Contact
								170	TOTAL VIOLATIONS OBSERVED & REPORTED



Marine Protected Area (MPA) Watch 2020 Regional Report

LAW'S MPA WATCH BOAT BASED SURVEYS



MPA Watch Boat Based Surveys conducted from the LA Waterkeeper vessel focus on boating and fishing activity in and around the Point Dume and Point Vicente/Abalone Cove, Los Angeles County Mainland MPAs at this time. Google Earth and GIS Mappings are produced. Collected information helps inform CA DFW staff and future scientific studies on MPA activities. Waterkeeper conducts 60-70 surveys a year, split between the two mainland MPAs.

MPA Watch Boat Crew Positions - 5 Volunteer Spots Available Each Trip

1. Boat Operator – Quill - LAW Staff
2. Spotter – Binoculars – (not shown)
3. Distance Finder Operator
4. Photographer
5. Data Scribe
6. IPAD - GPS Unit Operator

Transect Start and End Points

Surveys begin and end two miles past either side of the MPA boundaries.

Boat speed during transect

Transects are run at a speed of approximately 10 knots and roughly a half-mile from shore, topping to observe activity on the water or onshore as needed.

Data Collection

All boating activity and all onshore fishing observed, inside or outside the MPAs, while traveling a transect are documented.

Waterkeeper stays at a safe, unobtrusive distance from the observed vessels, moving to position the observed on a heading of directly North, South, East, or West from the Waterkeeper.

For Each Vessel or Onshore Fishers:

1. The time of sighting is documented.
2. Waterkeeper's GPS position is documented.
3. The compass heading from the Waterkeeper is documented.
4. The distance from the Waterkeeper is documented
5. Vessel type or onshore fishing method is documented.
6. Quantity of observed vessels or fishers onshore is documented.
7. Two Photos are taken of the vessel or fishers.
8. Any additional notes and comments are documented.

If fishers are violating MPA Regulations from a vessel or onshore, DFW is called and a report is filed. That action is also documented.

On The Water Outreach and Education

LA Waterkeeper views fisher's fishing from vessels positioned on the MPA boundary, and within MPA boundaries, as potential on the water outreach opportunities. After collecting data from a safe distance, and on a case-by-case basis, Waterkeeper may approach violating fishers in vessels slowly and safely. As part of our good neighbor outreach and education approach, Waterkeeper informs violators of the MPA regulations, and provides information on where fishing is permitted. After making contact and getting permission from the boaters/fishers, Waterkeeper will safely approach, inform boaters, fishermen, and other fellow watermen about MPA boundaries and MPA regulations. DFW Guides and MPA maps are also distributed if desired, and if it can be done so safely.

If boaters are open to conversation and possess a VHF radio that may be used to communicate, if boater to boater conversing is hampered.

Join Us on the Waterkeeper Boat for a MPA Watch Trip!



What is a MPA?

A Marine Protected Area (MPA) is an area of the ocean where consumptive human activities such as fishing are limited or restricted in order to protect or conserve marine life or habitats.

On land, we have National Parks, National Forests, Reserves, etc. Marine Protected Areas provide similar protection to small areas in the ocean.

The main purpose of MPA Watch is to conduct outreach to local fisherman, boaters, and watersports enthusiasts about the new boundaries and restrictions and to gather data on the trends of boating and fishing in and around the Los Angeles County Marine Protected Areas.

Waterkeeper's MPA Watch Trips run about 4-5 hours. We travel from Marina Del Rey to the Point Vicente and Abalone Cove MPAs in Palos Verdes or to the Point Dume MPAs in Malibu.

MPA Watch Boat Trips are scheduled on our Calendar at www.LAWaterkeeper.org/mpa-watch.



Contact Michael Quill: mquill@lawaterkeeper.org (310) 394-6162, ext. 113 – If you'd like to join our MPA Watch Crew.



Join Los Angeles Waterkeeper's MPA Watch Boat - Based Surveys!!



Thank you to LAW volunteer crew members who get it done!



LAW Supplies Fuel Docks and Fisher Shops With MPA Outreach Materials



LAW Supplies on The Water MPA Outreach and Education



As soon as the COVID-19 pandemic subsides, we'll be crewing up the Waterkeeper again with volunteers!



To Join Our Crew Contact:
Michael Quill, LAW Marine Programs Director
mquill@lawaterkeeper.org

Additional Information

For additional information on MPA Watch, including survey sites, participating organizations, protocols and datasheets, media kit, and how to get involved, please visit mpawatch.org.
Connect with MPA Watch on social media @MPAWatchOrg