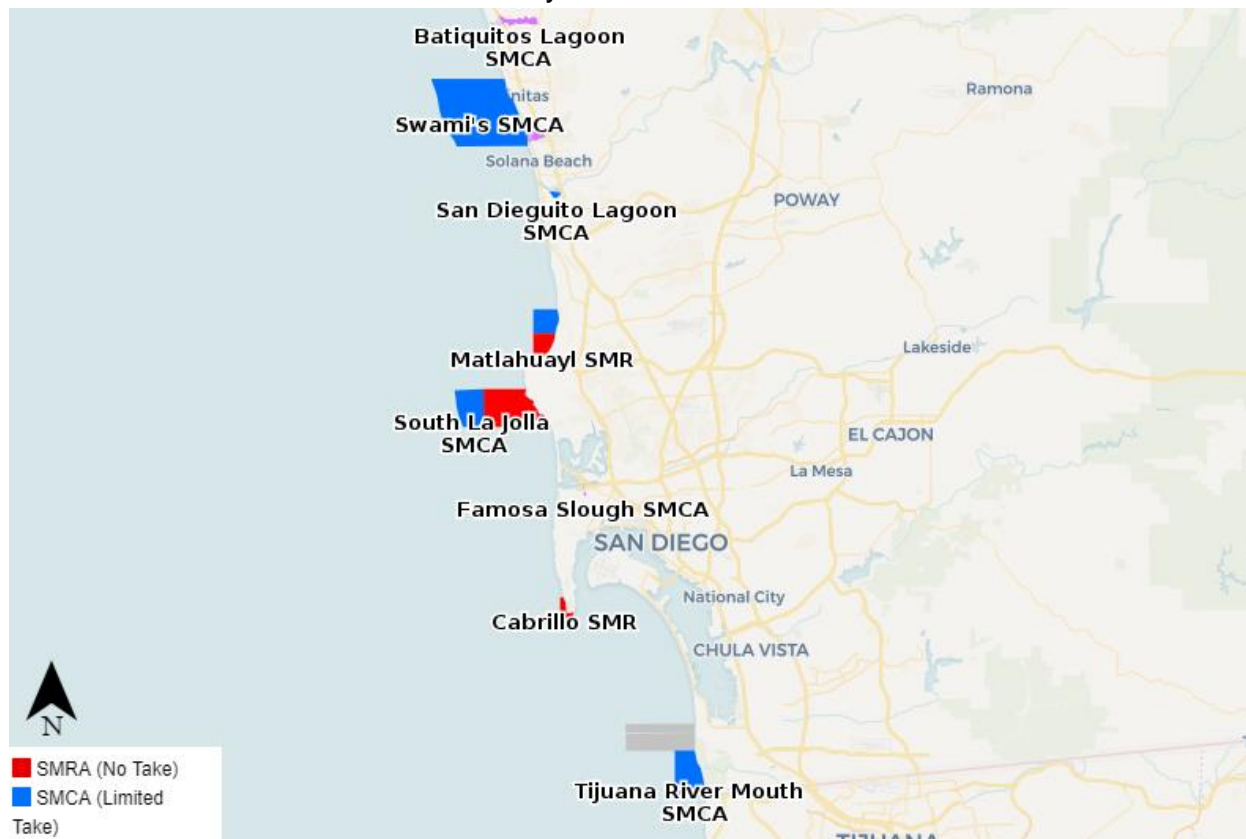


Marine Protected Area (MPA) Watch Regional Report

San Diego County (Shore- Based)

January 2023 - June 2023



MPA Watch is a statewide collaborative effort to collect critical human use data to enhance the management and conservation of marine protected areas (MPAs). MPA Watch data informs the management, enforcement, and science of California's MPAs and allows us insight on how human uses are changing as a result of MPA implementation. By involving local communities in this important work, MPA Watch programs inspire and empower stewardship, and educate California communities about ocean ecosystems. MPA Watch trains volunteers to observe and collect unbiased data on coastal and marine resource use. The San Diego Marine Protected Area Watch Program, organized by WILDCOAST, engages community scientists in five MPAs in San Diego County, including Swami's SMCA, San Diego- Scripps Coastal SMCA, Matlahuayl SMR, South La Jolla SMR, and the Tijuana River Mouth SMCA.

Executive Summary

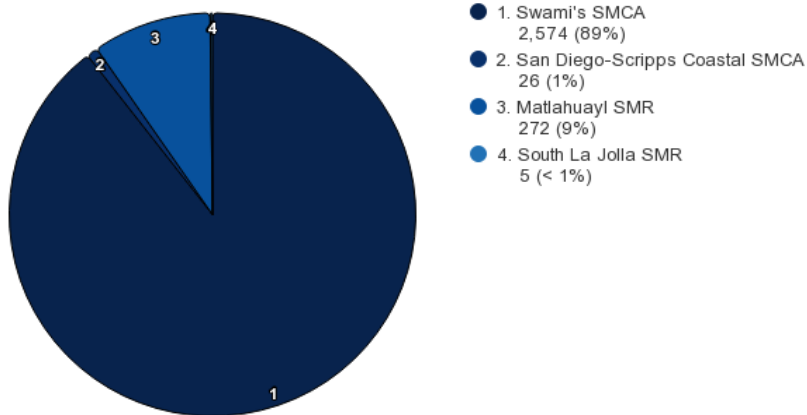
- From January to June of 2023 in San Diego County, 49 surveys were conducted by 5 volunteers with 3 potential violations observed,
- While all potential violations occurred in the Swami's SMCA for shore-based surveys, the majority of potential violations for boat-based surveys occurred in South La Jolla SMR.

HUMAN USE OF MPAS JANUARY - JUNE 2023

OVERVIEW

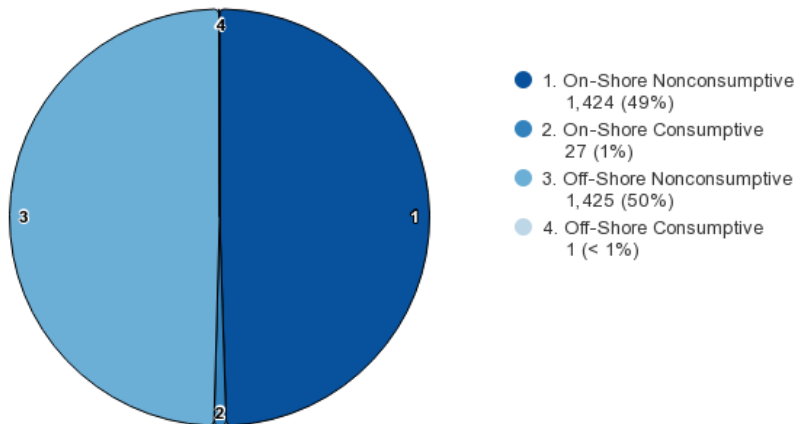
Top 4 MPAs by All Activity

January 1, 2023 - June 30, 2023
2,877 total activity events



All MPAs Combined

January 1, 2023 - June 30, 2023
2,877 activity events



ACTIVITY CLASSIFICATIONS

On-Shore - Activities that take place on a sandy or rocky beach. Excludes bluffs, trails, sea walls, parking lots, or other man-made structures. Includes recreation, tidepooling, shore-based fishing, etc.

Off-Shore - Activities that take place offshore, typically in knee-deep water or deeper. Includes surfing, SCUBA diving, kayaking, boat fishing, etc.

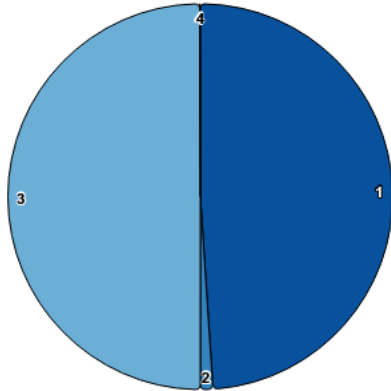
Consumptive - An activity in which a natural resource (i.e. fish, kelp, shells) is being collected.

Non-Consumptive - An activity in which a natural resource is not collected.

ACTIVITY BY MPA

Swami's SMCA

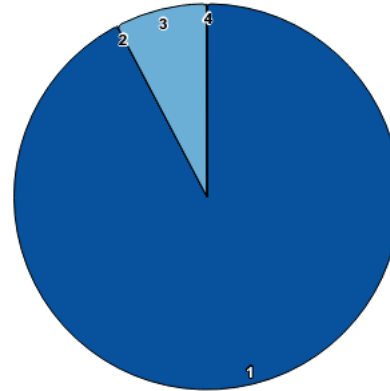
January 1, 2023 - June 30, 2023
2,574 activity events



- 1. On-Shore Nonconsumptive
1,260 (49%)
- 2. On-Shore Consumptive
27 (1%)
- 3. Off-Shore Nonconsumptive
1,286 (50%)
- 4. Off-Shore Consumptive
1 (< 1%)

San Diego-Scripps Coastal SMCA

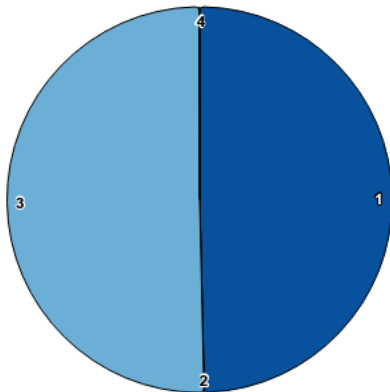
January 1, 2023 - June 30, 2023
26 activity events



- 1. On-Shore Nonconsumptive
24 (92%)
- 2. On-Shore Consumptive
0 (< 1%)
- 3. Off-Shore Nonconsumptive
2 (8%)
- 4. Off-Shore Consumptive
0 (< 1%)

Matlahuayl SMR

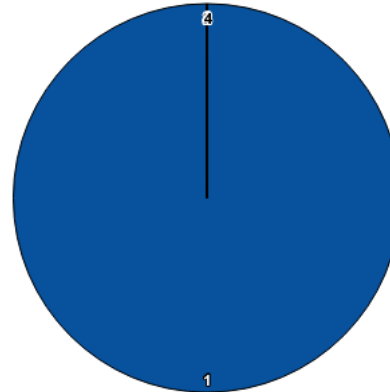
January 1, 2023 - June 30, 2023
272 activity events



- 1. On-Shore Nonconsumptive
135 (50%)
- 2. On-Shore Consumptive
0 (< 1%)
- 3. Off-Shore Nonconsumptive
137 (50%)
- 4. Off-Shore Consumptive
0 (< 1%)

South La Jolla SMR

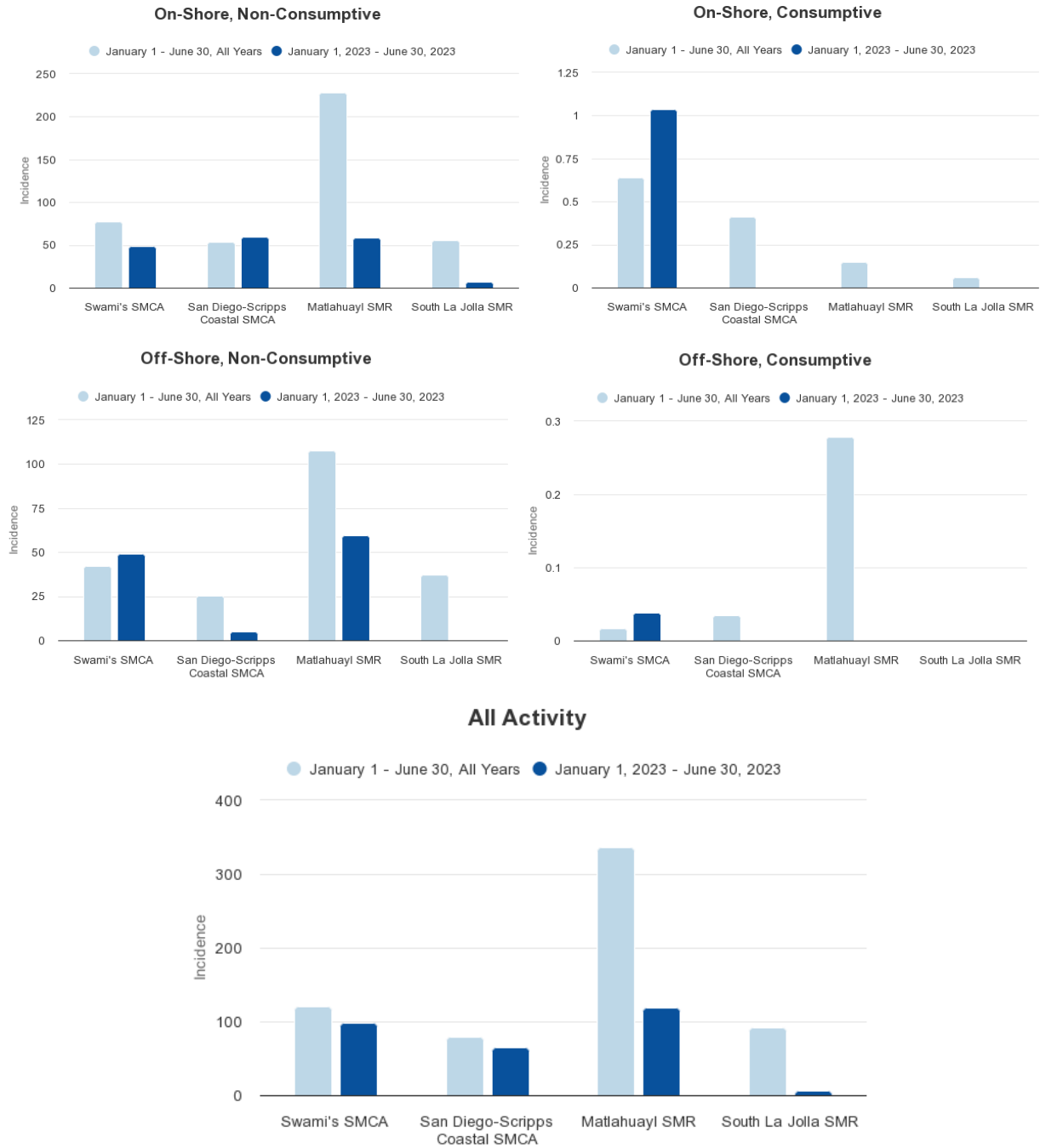
January 1, 2023 - June 30, 2023
5 activity events



- 1. On-Shore Nonconsumptive
5 (100%)
- 2. On-Shore Consumptive
0 (< 1%)
- 3. Off-Shore Nonconsumptive
0 (< 1%)
- 4. Off-Shore Consumptive
0 (< 1%)



ACTIVITY INCIDENCE BY MPA



The above charts show incidence values for each MPA monitored by MPA Watch in San Diego County. **Incidence is calculated as number of activities recorded divided by total survey-miles.**

ACTIVITY INCIDENCE BY MPA

MPA	On-Shore			
	Non-Consumptive		Consumptive	
	January 1 June 30 All Years	January 1, 2023 through June 30, 2023	January 1 June 30 All Years	January 1, 2023 through June 30, 2023
	Swami's SMCA	77.7	48.3	0.6
San Diego-Scripps Coastal SMCA	53.9	60.0	0.4	0.0
Matlahuayl SMR	228.5	58.7	0.2	0.0
South La Jolla SMR	55.3	7.1	0.1	0.0
All MPAs Combined	67.2	48.3	1.1	0.9

MPA	Off-Shore			
	Non-Consumptive		Consumptive	
	January 1 June 30 All Years	January 1, 2023 through June 30, 2023	January 1 June 30 All Years	January 1, 2023 through June 30, 2023
	Swami's SMCA	41.9	49.3	0.0
San Diego-Scripps Coastal SMCA	25.1	5.0	0.0	0.0
Matlahuayl SMR	107.5	59.6	0.3	0.0
South La Jolla SMR	37.0	0.0	0.0	0.0
All MPAs Combined	30.6	48.3	0.2	0.0

MPA	Total Combined	
	January 1 June 30 All Years	January 1, 2023 through June 30, 2023
	Swami's SMCA	120.3
San Diego-Scripps Coastal SMCA	79.4	65.0
Matlahuayl SMR	336.4	118.3
South La Jolla SMR	92.3	7.1
All MPAs Combined	99.1	97.5

NOTES ON CALCULATING INCIDENCE

The baseline rate for the reporting period was calculated by summing the total use count for each category during the same period from each previous year and dividing this value by the transect miles surveyed at each site. The miles surveyed were calculated by first identifying the length of each transect for all the MPAs in question and multiplying the length of the transect by the number of surveys that had been taken along that transect during the same time period. For MPAs with multiple transects, the total distance traveled for each transect within the MPA were summed together to get the total miles surveyed within that MPA.

BREAKDOWN BY MPA

Swami's State Marine Conservation Area

Between the months of January and June 2023, San Diego MPA Watch data shows a rate of 98.6 total use count per total miles surveyed in the Swami's SMCA.

People observed in the MPA were primarily taking part in non-consumptive activities both on and off-shore, including beach recreation, surfing, paddleboarding, tidepooling, and animals on leash. These accounted for over 99% of the activities logged in MPA Watch surveys. The remaining 1% of human use consisted of on-shore and off-shore consumptive activities. According to volunteers, there were recurring issues with potentially illegal hook and line fishing from shore and hand collection of biota on shore.

San Diego-Scripps Coastal State Marine Conservation Area

Between the months of January and December 2022, San Diego MPA Watch data shows a rate of 65 total use count per total miles surveyed in the San Diego-Scripps Coastal SMCA.

People observed in the MPA were only recorded taking part in non-consumptive activities both on and off-shore, including beach recreation and surfing.

Matlahuayl State Marine Reserve

Between the months of January and December 2022, San Diego MPA Watch data shows a rate of 118.3 total use count per total miles surveyed in the Matlahuayl SMR.

People observed in the MPA were only recorded taking part in non-consumptive activities both on and off-shore, including beach recreation, surfing, kayaking, and scuba diving.

South La Jolla State Marine Reserve

Between the months of January and December 2022, San Diego MPA Watch data shows a rate of 7.1 total use count per total miles surveyed in the South La Jolla SMR.

People observed in the MPA were only recorded taking part in non-consumptive activities on-shore.

South La Jolla State Marine Conservation Area

Between the months of January and December 2022, there were no land-based surveys conducted by San Diego MPA Watch in the South La Jolla SMCA.

Tijuana River Mouth State Marine Conservation Area

Between the months of January and December 2022, there were no land-based surveys conducted by San Diego MPA Watch in the Tijuana River Mouth SMCA. There have been recurring issues with beach closures at the Tijuana River Mouth SMCA due to poor water quality resulting from sewage contamination.

POTENTIAL VIOLATIONS

From shore-based surveys, only 3 potential violations were observed, all of which occurred in Swami's SMCA. These 3 potential violations were all the hand collection of biota. 23 were seen fishing by hook and line from the beach, 1 from rocky intertidal zone, however they were likely in compliance.

NEXT STEPS

In San Diego County, WILD Coast is working to increase outreach for MPA Watch and increase the number of volunteers we have collecting human use data within our local MPAs, specifically through the help of interns.

WILD Coast has been conducting public outreach to spread awareness surrounding tide pools that fall under MPA protections. These efforts are focused primarily on the tide pools located within MPA boundaries located at San Diego-Scripps SMCA and Swami's SMCA.

MPA Watch intends to continue to collaborate with the California Department of Fish and Wildlife (CDFW) to distribute MPA Watch reports to regional managers in order to improve the management and enforcement of MPAs. MPA Watch is also looking to expand its network of partner organizations to enhance the scale and scope of MPA monitoring across California. MPA Watch will be making our human use data available on our website to make it accessible to partners, resource agencies, municipalities, and other interested parties. One of the hopes of MPA Watch is that volunteers and community members help spread knowledge and awareness of MPAs to the communities that surround them, inspiring marine stewardship in our populations.

ADDITIONAL INFORMATION

For additional information on MPA Watch, including survey sites, participating organizations, protocols and datasheets, media kit, and how to get involved, please visit mpawatch.org. Connect with MPA Watch on social media @MPAWatchOrg.

For additional information regarding MPAs and regulations specific to the various classifications of MPAs please visit wildlife.ca.gov/MPAs. If you see an activity that violates MPA regulations, please call CalTip to report the violation at (888) 334-2258.

For more information about the work WILD Coast does to conserve California's MPAs and other conservation projects please visit wildcoast.org.