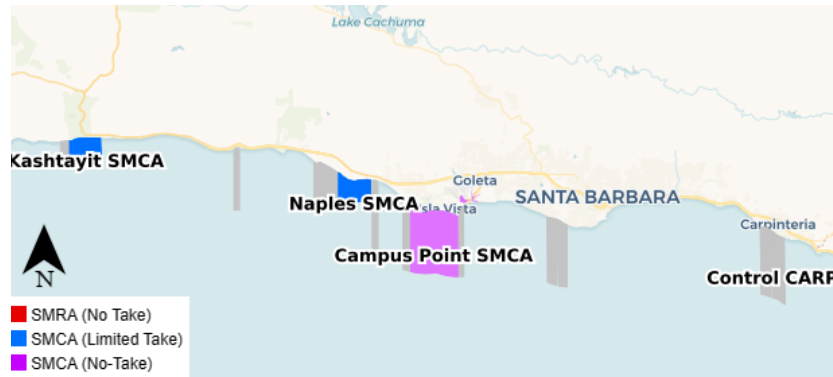




**Marine Protected Area (MPA) Watch
Regional Report**
Santa Barbara County – Chumash Lands
January 1, 2024 - June 30, 2024



MPA Watch is a statewide collaborative effort to collect critical human use data to enhance the management and conservation of marine protected areas (MPAs). MPA Watch data informs the management, enforcement, and science of California's MPAs and allows us insight on how human uses are changing as a result of MPA implementation. By involving local communities in this important work, MPA Watch programs inspire and empower stewardship, and educate California communities about ocean ecosystems. MPA Watch trains volunteers to observe and collect unbiased data on coastal and marine resource use. The Santa Barbara Marine Protected Area (MPA) Watch Program, organized by Santa Barbara Channelkeeper, engages community scientists in conducting surveys in three MPAs in southern Santa Barbara County—Campus Point State Marine Conservation Area, Naples State Marine Conservation Area, and Kashtayit State Marine Conservation Area. Additional MPA Watch surveys are also conducted by California State Parks staff at Kashtayit State Marine Conservation Area (Gaviota State Beach).

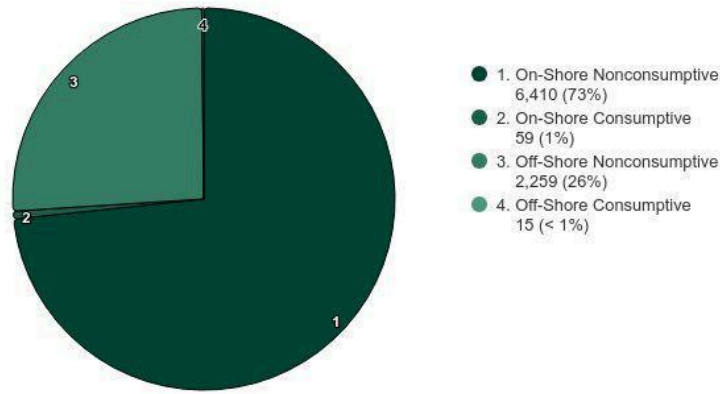
Executive Summary

- Non-consumptive activities (onshore and offshore) account for 99.15% of observations in the Campus Point, Naples, and Kashtayit MPAs.
- While most of the reported activities were non-consumptive, volunteers report potential poaching is still a problem, especially shore-based hook and line fishing in the western portion of Campus Point SMCA near the Ellwood Bluffs.
- Channelkeeper trained 34 community members about MPAs and MPA Watch during the January to June 2024 period.

HUMAN USE OF MPAS January 1, 2024 - June 30, 2024

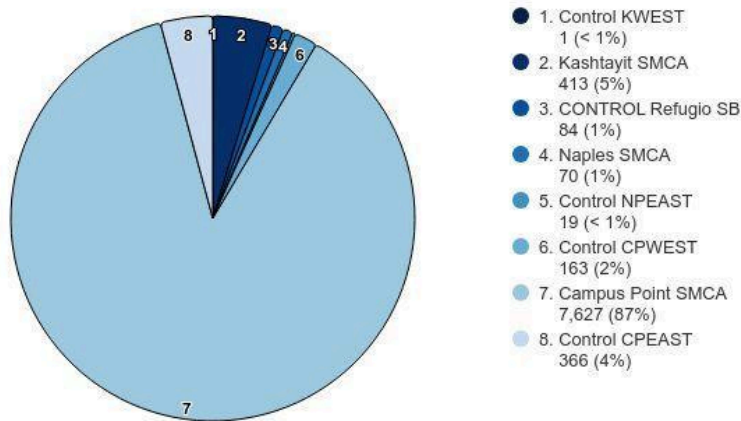
All MPAs Combined

January 1, 2024 - June 30, 2024
8,743 activity events



Top 8 MPAs by All Activity

January 1, 2024 - June 30, 2024
8,743 total activity events



ACTIVITY CLASSIFICATIONS

On-Shore - Activities that take place on a sandy or rocky beach. Excludes bluffs, trails, sea walls, parking lots, or other man-made structures. Includes recreation, tidepooling, shore-based fishing, etc.

Off-Shore - Activities that take place offshore, typically in knee-deep water or deeper. Includes surfing, SCUBA diving, kayaking, boat fishing, etc.

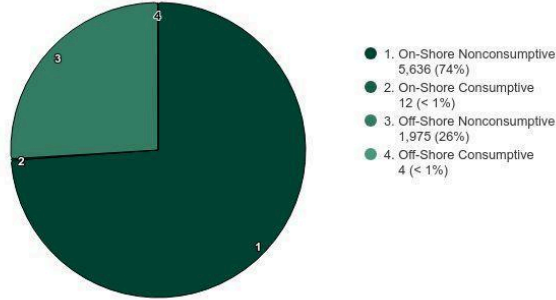
Consumptive - An activity in which a natural resource (i.e. fish, kelp, shells) is being collected.

Non-Consumptive - An activity in which a natural resource is not collected.

ACTIVITY BY MPA

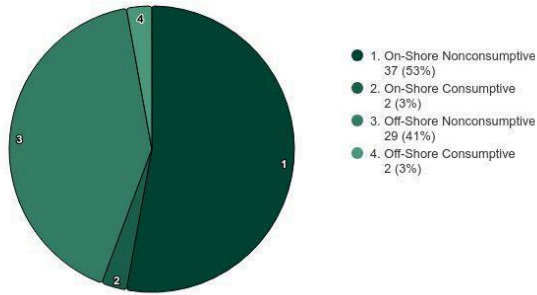
Campus Point SMCA

January 1, 2024 - June 30, 2024
7,627 activity events



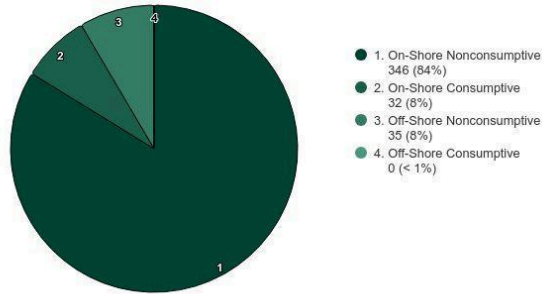
Naples SMCA

January 1, 2024 - June 30, 2024
70 activity events

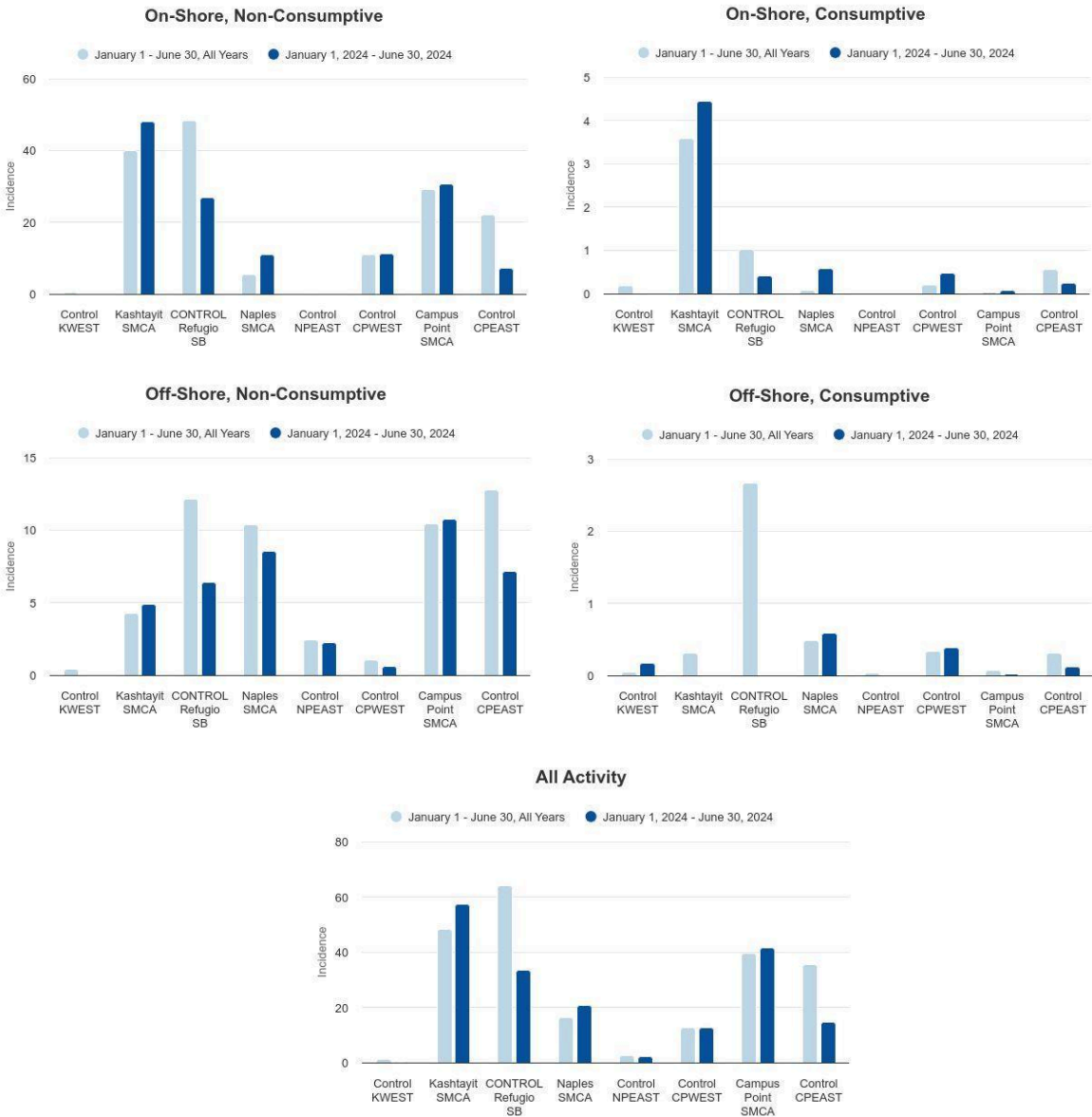


Kashtayit SMCA

January 1, 2024 - June 30, 2024
413 activity events



ACTIVITY INCIDENCE BY MPA



The above charts show incidence values for each MPA monitored by MPA Watch in Santa Barbara County.

Incidence is calculated as number of activities recorded divided by total survey-miles.

ACTIVITY INCIDENCE BY MPA

MPA	On-Shore			
	Non-Consumptive		Consumptive	
	January 1 June 30 All Years	January 1, 2024 through June 30, 2024	January 1 June 30 All Years	January 1, 2024 through June 30, 2024
Control KWEST	0.4	0.0	0.2	0.0
Kashtayit SMCA	40.1	48.1	3.6	4.4
CONTROL Refugio SB	48.4	26.8	1.0	0.4
Naples SMCA	5.4	10.9	0.1	0.6
Control NPEAST	0.1	0.0	0.0	0.0
Control CPWEST	11.0	11.3	0.2	0.5
Campus Point SMCA	29.1	30.6	0.0	0.1
Control CPEAST	22.0	7.3	0.6	0.2
All MPAs Combined	29.3	25.7	0.3	0.2

MPA	Off-Shore			
	Non-Consumptive		Consumptive	
	January 1 June 30 All Years	January 1, 2024 through June 30, 2024	January 1 June 30 All Years	January 1, 2024 through June 30, 2024
Control KWEST	0.4	0.0	0.0	0.2
Kashtayit SMCA	4.3	4.9	0.3	0.0
CONTROL Refugio SB	12.1	6.4	2.7	0.0
Naples SMCA	10.4	8.5	0.5	0.6
Control NPEAST	2.4	2.3	0.0	0.0
Control CPWEST	1.1	0.6	0.3	0.4
Campus Point SMCA	10.4	10.7	0.1	0.0
Control CPEAST	12.7	7.1	0.3	0.1
All MPAs Combined	9.4	9.1	0.2	0.1

MPA	Total Combined	
	January 1 June 30 All Years	January 1, 2024 through June 30, 2024
	Control KWEST	1.1
Kashtayit SMCA	48.3	57.4
CONTROL Refugio SB	64.2	33.6
Naples SMCA	16.3	20.6
Control NPEAST	2.5	2.3
Control CPWEST	12.7	12.7
Campus Point SMCA	39.7	41.5
Control CPEAST	35.6	14.8
All MPAs Combined	39.2	35.1

NOTES ON CALCULATING INCIDENCE

The baseline rate for the reporting period was calculated by summing the total use count for each category during the same period from each previous year and dividing this value by the transect miles surveyed at each site. The miles surveyed were calculated by first identifying the length of each transect for all the MPAs in question and multiplying the length of the transect by the number of surveys that had been taken along that transect during the same time period. For MPAs with multiple transects, the total distance traveled for each transect within the MPA were summed together to get the total miles surveyed within that MPA.

BREAKDOWN BY MPA

Campus Point SMCA

In January-June 2024, Santa Barbara Channelkeeper Marine Protected Area (SB MPA) Watch volunteers conducted 293 land-based surveys within the Campus Point State Marine Conservation Area (SMCA) and 63 surveys outside of the MPA on the eastern and western borders.

Between January and June 2024, Santa Barbara MPA Watch data shows a rate of 41.5 total use count per total miles surveyed in the Campus Point SMCA. This rate of total use is slightly higher than the average over all years (average 39.7 total users per miles surveyed). Nonconsumptive onshore activities (primarily beach recreation on sandy substrate) accounted for 74% of all observations in the first six months of 2024. Offshore nonconsumptive activities accounted for 26% of all observations with surfing at 22% of all observations. There were also 282 observations of tidepooling (4% of all observations). Potential violations observed include 2 counts of hand collection of biota throughout the MPA and 10 observations of shore-based recreational hook and line fishing in the MPA.

Naples SMCA

In January- June 2024, Santa Barbara Channelkeeper Marine Protected Area (SB MPA) Watch volunteers conducted 34 surveys within the Naples State Marine Conservation Area (SMCA) and 21 surveys outside of the MPA on the eastern border.

During the first half of 2024, the total use count per mile for this time period was 20.6, which is slightly higher than the average over all years but is still down from peak total use count of 38.2 that was observed in 2022. Part of this decrease in observed activity could also be due to the winter storms, which limited access to the beach at Naples MPA. There were 4 observations of potential violations at the Naples MPA including 2 counts of shore-based recreational hook and line fishing and 2 counts of off-shore boats line fishing.

Kashtayit SMCA

During the January- June 2024 time period, Santa Barbara Channelkeeper Marine Protected Area (SB MPA) Watch volunteers and State Park volunteers conducted 36 surveys within the SMCA. In the first part of the year, there were limited surveys of the Kashtayit MPA as the Gaviota State Park beach, which one of the surveys falls into, was closed due to damage from winter storms. The road that accesses the western portion of the MPA was also closed for a period of time due to storm damage.

Overall, the total use rate at Kashtayit SMCA was 57.4 for the first six months of 2024, which is slightly higher than the average of previous years (48.3). Sandy beach recreation accounted for 83% of all observations, followed by onshore hook and line fishing at 8% of observations, and offshore recreation at 7% of observations. Kashtayit SMCA allows for the recreational take of most species except for mussels and scallops.

State Parks shared this update from their staff and volunteers conducting surveys at Kashtayit: Gaviota State Park where Kashtayit MPA is located was closed this past winter and early spring due to damage from winter storms. The Park and MPA Watch transect were largely inaccessible between February and April 2024, thus making it difficult for Park staff and volunteers to survey

the site. Despite the park closure individuals were still accessing Kashtayit SMCA by walking into the park. Although not captured in the MPA Watch surveys completed during January – June 2024, one main user group is kayakers who are engaging in hook and line fishing. These individuals are typically fishing for halibut as observed when they have landed on shore. External reports of MPA violations have been reported; although, no MPA violations have been observed during this time period. Fishing the line is a frequent observation. Historically, the main violations are dogs off leash from day-use recreationists and from the campground. With the park closure, this issue has been mitigated. Park staff will train the new camp hosts to conduct MPA Watch Surveys at Kashtayit SMCA.

Santa Barbara County MPAs Boat-based Surveys **January – June 2024**

In addition to the shore-based MPA Watch surveys, Santa Barbara Channelkeeper staff conducts offshore surveys from the Research Vessel *Channelkeeper* of Campus Point and Naples MPAs. Surveys are also conducted at control sites for two miles on the eastern and western areas adjacent to the Campus Point and Naples MPAs. Channelkeeper has conducted boat-based surveys of these two coastal MPAs since 2013.

As conditions permit, surveys are also conducted at the northern Channel Islands including Anacapa, Santa Cruz, and Santa Rosa Islands in the following MPAs: Anacapa SMCA, Anacapa SMR, Painted Cave SMCA, Carrington Point SMR, Skunk Point SMR, Gull Island SMR, Footprint SMR, and Scorpion SMR. Control surveys are conducted for two miles on either side of the MPAs at the Channel Islands as well. Channelkeeper began conducting surveys at the Northern Channel Islands in 2019.

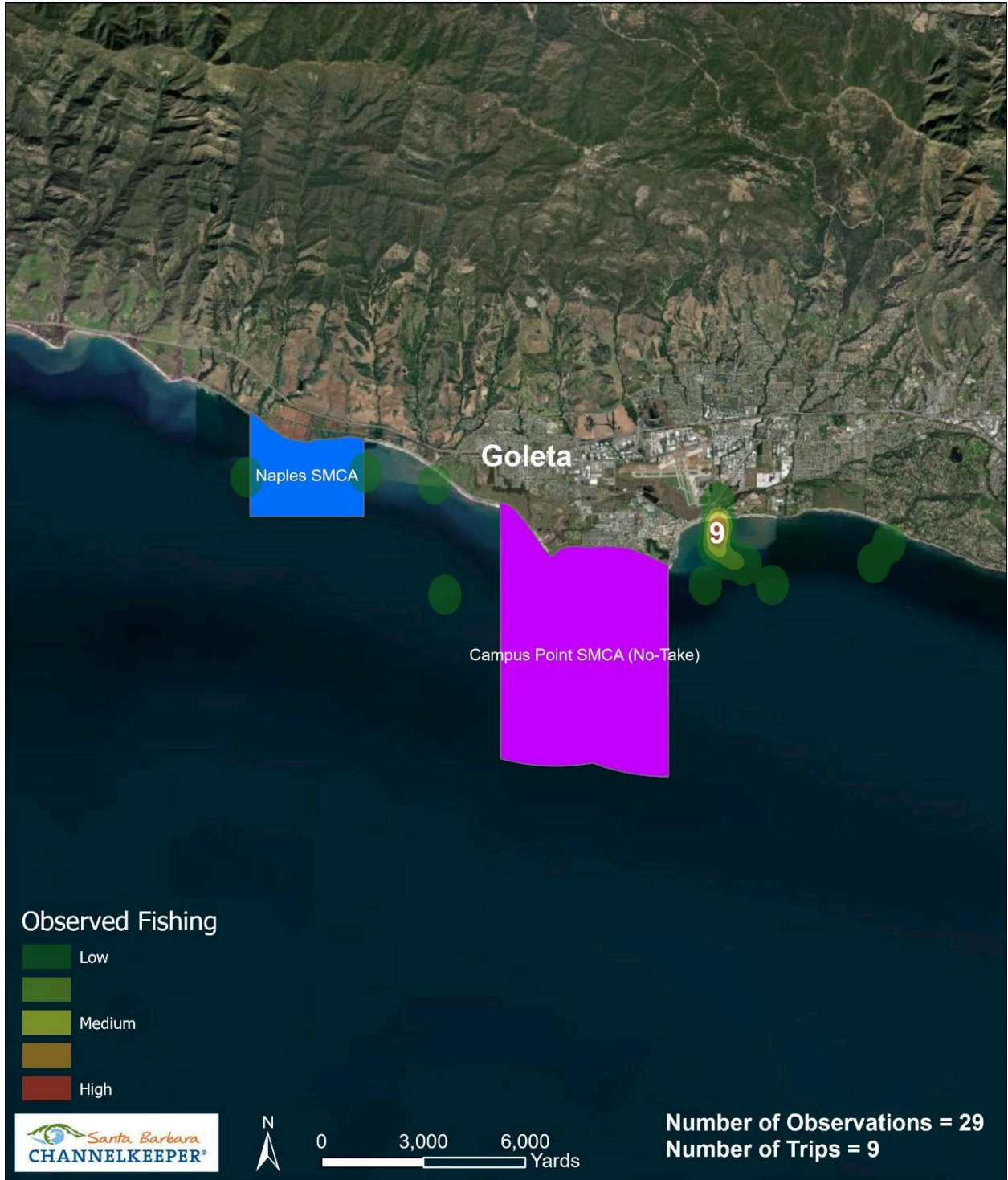
During boat MPA Watch surveys SBCK documents all consumptive and non-consumptive boating activity, as well as all fishing and other consumptive activities observed taking place on or in the water, as well as all onshore fishing and any other consumptive activity occurring in and around the MPA's, including control areas. Channelkeeper staff are present and conduct all surveys.

Due to regular boat maintenance that had the vessel out of the water for a period in the winter, as well as winter storms and typical windy and foggy conditions in the spring that resulted in numerous small craft advisories and gale warnings, fewer boat surveys were conducted than planned for during this time period. Channelkeeper completed 9 coastal boat MPA Watch surveys of Campus Point and Naples SMCAs.

There were no potential violation was observed during the coastal boat-based surveys conducted during January to June 2024 time period.

For the coastal boat-based surveys of Campus Point and Naples MPAs, recreational hook and line fishing from the Goleta Pier and in the area to the south and east of the pier in the control survey is the most observed activity. The following heat map reflects fishing activity observed during coastal boat-based surveys for January to June 2024.

Jan - Jun 2024 All Fishing Activity Santa Barbara



POTENTIAL VIOLATIONS

Rate of consumptive activities observed in Kashtayit, Naples, and Campus Point MPAs remains relatively low accounting for less than 0.85% of all observations recorded by shore-based surveys. In the Campus Point (No-Take) SMCA, shore-based MPA Watch volunteers observed ten potential violations of shore-based hook and line fishing activity in the MPA, with many of the observations occurring in the western portion of the MPA by Ellwood Mesa. This is an increase from past years. There were also 2 observations of hand collection of biota, which is less than previously observed. In the Naples SMCA, shore-based volunteers observed two counts of hook and line fishing from shore and two counts of boat fishing by line. Both of these activities are prohibited in this MPA.

State Parks staff reported that take of mussels and rock scallops are observed regularly at different locations within the Kashtayit MPA. Take of these species is prohibited at Kashtayit. These potential violations are not documented in MPA Watch surveys but do regularly occur at varying access points. The locations have been questionable as they are “on the line” of the MPA. Individuals use Kashtayit SMCA as an access point for fishing further up the coast towards Point Conception. Dogs off-leash and on the beach are another violation (of State Beach regulations) at Kashtayit and occur frequently.

Even if the noncompliance rate is low, it is important to note that any illegal take from MPAs jeopardizes the success of the MPA and health of the ecosystems which they protect.

NEXT STEPS

Channelkeeper will continue to educate and train new MPA Watch volunteers to conduct shore-based surveys at the three coastal MPAs in southern Santa Barbara County. As conditions and weather permits, we will also conduct boat-based surveys of the coastal MPAs at Campus Point and Naples SMCAs and at MPAs in the Northern Channel Islands (Footprint SMR, Anacapa Island SMR and SMCA, and Scorpion SMR).

State Parks plans to continue to train hosts (who are interested) to conduct MPA Watch surveys at the Kashtayit SMCA. Hosts change regularly (3-4 months), so they will continue to support on-going efforts to collect more data. In addition, State Parks plans to incorporate MPA Watch into more of their field trip programs to allow students to help collect data (one survey is collected). They are also currently working on a curriculum that incorporates more community science data and looks toward involving students in the data collection.



ADDITIONAL INFORMATION

For additional information on MPA Watch, including survey sites, participating organizations, protocols and datasheets, media kit, and how to get involved, please visit mpawatch.org. Connect with MPA Watch on social media @MPAWatchOrg.

For additional information regarding MPAs and regulations specific to the various classifications of MPAs please visit wildlife.ca.gov/MPAs. If you see an activity that violates MPA regulations, please call CalTIP to report the violation at (888) 334-2258.

For more information about the work Santa Barbara Channelkeeper does to protect and restore the Santa Barbara Channel and its watersheds, including to monitor and build support for local MPAs, please visit sbck.org.

