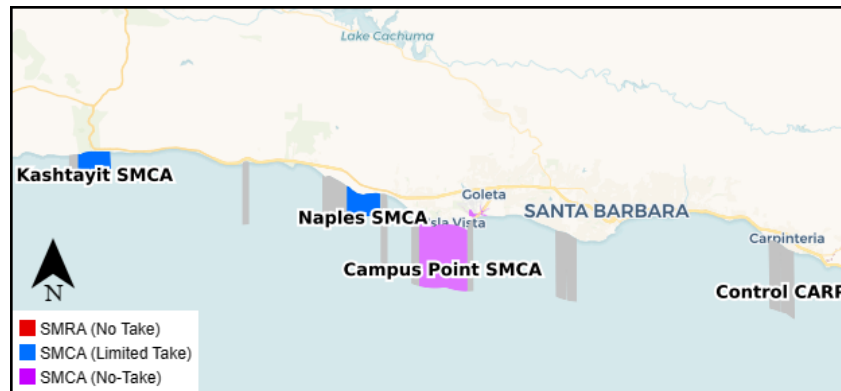




# Marine Protected Area (MPA) Watch Regional Report

Santa Barbara County - Chumash Lands  
January 1, 2024 – December 31, 2024



MPA Watch is a statewide collaborative effort to collect critical human use data to enhance the management and conservation of marine protected areas (MPAs). MPA Watch data informs the management, enforcement, and science of California's MPAs and allows us insight on how human uses are changing as a result of MPA implementation. By involving local communities in this important work, MPA Watch programs inspire and empower stewardship, and educate California communities about ocean ecosystems. MPA Watch trains volunteers to observe and collect unbiased data on coastal and marine resource use. The Santa Barbara Marine Protected Area (MPA) Watch Program, organized by Santa Barbara Channelkeeper, engages community scientists in conducting surveys in three MPAs in southern Santa Barbara County—Campus Point State Marine Conservation Area, Naples State Marine Conservation Area, and Kashtayit State Marine Conservation Area. Additional MPA Watch surveys are also conducted by California State Parks staff at Kashtayit State Marine Conservation Area (Gaviota State Beach).

## Executive Summary

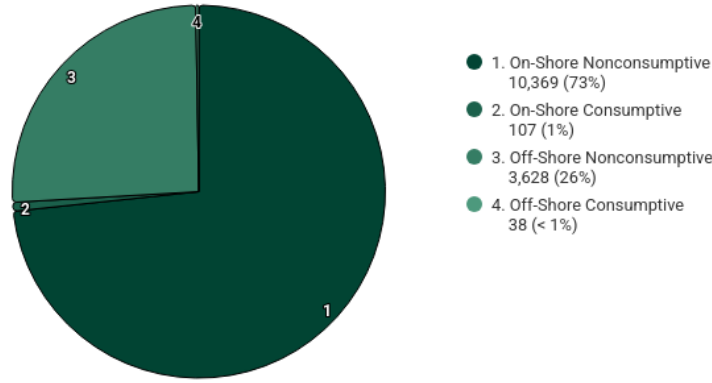
- In 2024, non-consumptive activities (onshore and offshore) accounted for 98.97% of observations in the Campus Point, Naples, and Kashtayit MPAs.
- Shore-based hook and line fishing in the western portion of Campus Point SMCA (No-Take), near the Ellwood Bluffs, continues to be observed by MPA Watch volunteers. There were 10 observations of shore-based fishing in the MPA in 2024.
- Channelkeeper trained 61 community members about MPAs and MPA Watch during the January to December 2024 period.



## HUMAN USE OF MPAS January 1, 2024 – December 31, 2024

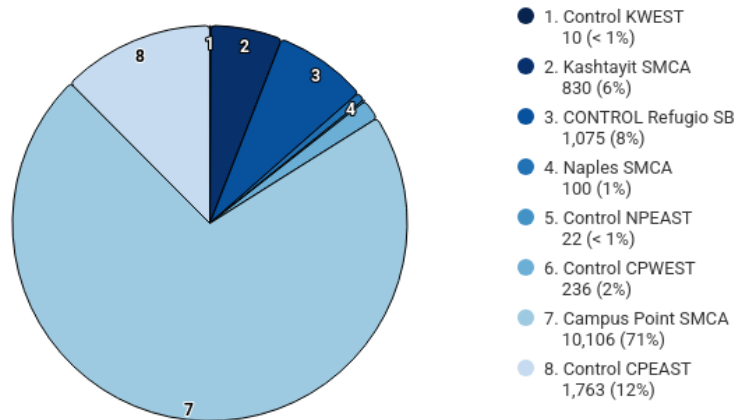
### All MPAs Combined

January 1, 2024 - December 31, 2024  
14,142 activity events



### Top 8 MPAs by All Activity

January 1, 2024 - December 31, 2024  
14,142 total activity events



### ACTIVITY CLASSIFICATIONS

**On-Shore** - Activities that take place on a sandy or rocky beach. Excludes bluffs, trails, sea walls, parking lots, or other man-made structures. Includes recreation, tidepooling, shore-based fishing, etc.

**Off-Shore** - Activities that take place offshore, typically in knee-deep water or deeper. Includes surfing, SCUBA diving, kayaking, boat fishing, etc.

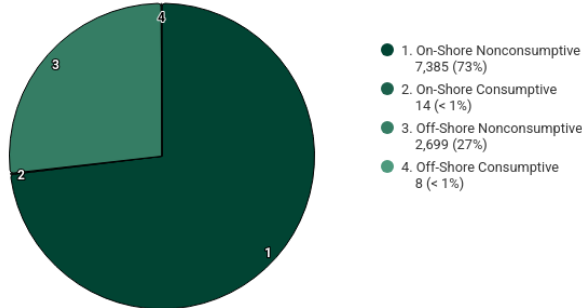
**Consumptive** - An activity in which a natural resource (i.e. fish, kelp, shells) is being collected.

**Non-Consumptive** - An activity in which a natural resource is not collected.

## ACTIVITY BY MPA

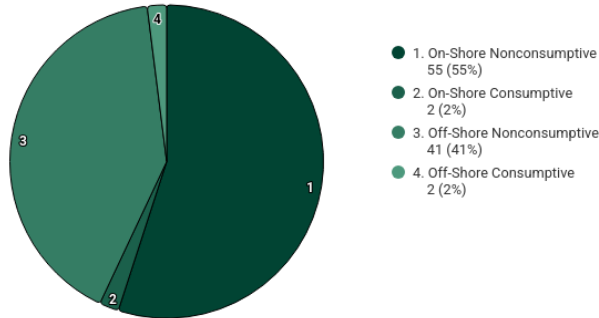
### Campus Point SMCA

January 1, 2024 - December 31, 2024  
10,106 activity events



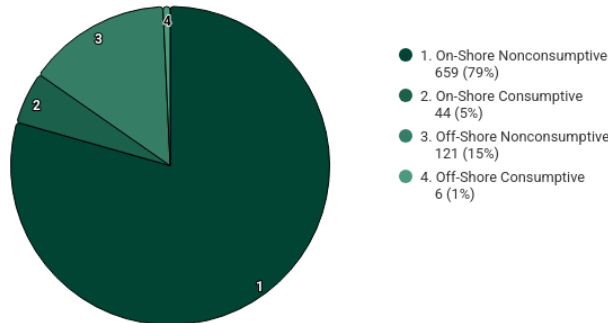
### Naples SMCA

January 1, 2024 - December 31, 2024  
100 activity events

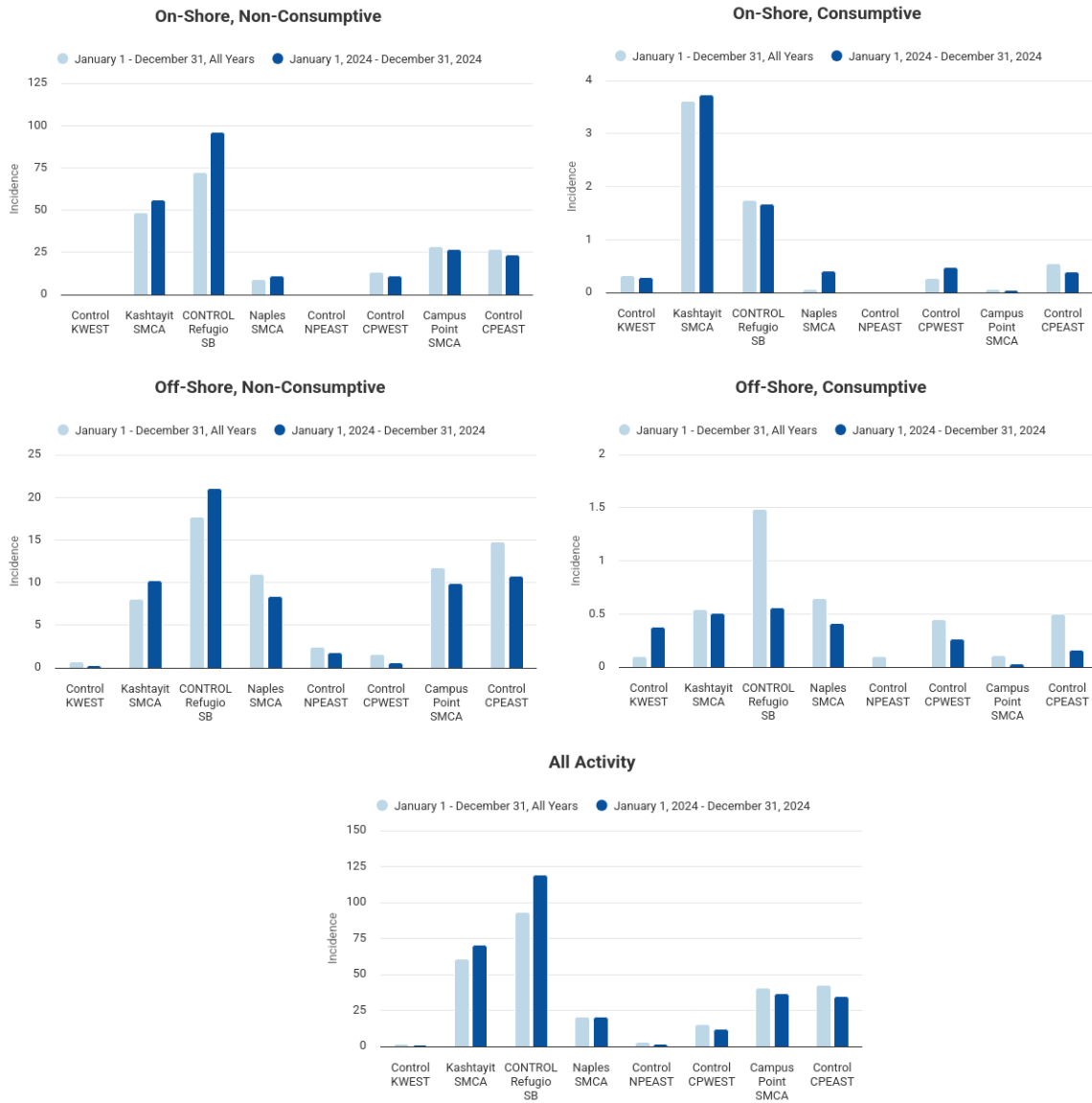


### Kashtayit SMCA

January 1, 2024 - December 31, 2024  
830 activity events



## ACTIVITY INCIDENCE BY MPA



The above charts show incidence values for each MPA monitored by MPA Watch in Santa Barbara County.

**Incidence is calculated as number of activities recorded divided by total survey-miles.**

## ACTIVITY INCIDENCE BY MPA

MPA	On-Shore			
	Non-Consumptive		Consumptive	
	January 1 December 31 All Years	January 1, 2024 through December 31, 2024	January 1 December 31 All Years	January 1, 2024 through December 31, 2024
Control KWEST	0.5	0.0	0.3	0.3
Kashtayit SMCA	48.3	55.8	3.6	3.7
CONTROL Refugio SB	72.3	96.2	1.7	1.7
Naples SMCA	8.8	11.2	0.1	0.4
Control NPEAST	0.2	0.0	0.0	0.0
Control CPWEST	13.0	11.0	0.3	0.5
Campus Point SMCA	28.4	27.0	0.1	0.1
Control CPEAST	26.7	23.7	0.5	0.4
All MPAs Combined	30.6	26.5	0.4	0.3

MPA	Off-Shore			
	Non-Consumptive		Consumptive	
	January 1 December 31 All Years	January 1, 2024 through December 31, 2024	January 1 December 31 All Years	January 1, 2024 through December 31, 2024
Control KWEST	0.7	0.3	0.1	0.4
Kashtayit SMCA	8.0	10.3	0.5	0.5
CONTROL Refugio SB	17.7	21.0	1.5	0.6
Naples SMCA	10.9	8.4	0.6	0.4
Control NPEAST	2.4	1.8	0.1	0.0
Control CPWEST	1.5	0.6	0.4	0.3
Campus Point SMCA	11.8	9.9	0.1	0.0
Control CPEAST	14.8	10.8	0.5	0.2
All MPAs Combined	10.9	9.3	0.2	0.1

MPA	Total Combined	
	January 1 December 31 All Years	January 1, 2024 through December 31, 2024
Control KWEST	1.6	1.0
Kashtayit SMCA	60.5	70.3
CONTROL Refugio SB	93.2	119.4
Naples SMCA	20.4	20.4
Control NPEAST	2.8	1.8
Control CPWEST	15.3	12.3
Campus Point SMCA	40.3	36.9
Control CPEAST	42.5	35.0
All MPAs Combined	42.1	36.1

### NOTES ON CALCULATING INCIDENCE

The baseline rate for the reporting period was calculated by summing the total use count for each category during the same period from each previous year and dividing this value by the transect miles surveyed at each site. The miles surveyed were calculated by first identifying the length of each transect for all the MPAs in question and multiplying the length of the transect by the number of surveys that had been taken along that transect during the same time period. For MPAs with multiple transects, the total distance traveled for each transect within the MPA were summed together to get the total miles surveyed within that MPA.

## BREAKDOWN BY MPA

### Campus Point SMCA

In January-December 2024, Santa Barbara Channelkeeper Marine Protected Area (SB MPA) Watch volunteers conducted 437 land-based surveys within the Campus Point State Marine Conservation Area (SMCA) and 111 surveys outside of the MPA on the eastern and western borders.

During this time period, Santa Barbara MPA Watch data shows a rate of 36.9 total use count per total miles surveyed in the Campus Point SMCA. This rate of total use is slightly lower than the average over all years (average 40.3 total users per miles surveyed). Nonconsumptive onshore activities (primarily beach recreation on sandy substrate) accounted for 73.08% of all observations in 2024. Offshore nonconsumptive activities accounted for 26.41% of all observations with surfing making up 22% of all observations. There were also 318 observations of tidepooling (3% of all observations). Potential violations observed include 4 counts of hand collection of biota throughout the MPA and 10 observations of shore-based recreational hook and line fishing in the MPA.

### Naples SMCA

In January- December 2024, Santa Barbara Channelkeeper Marine Protected Area (SB MPA) Watch volunteers conducted 49 surveys within the Naples State Marine Conservation Area (SMCA) and 31 surveys outside of the MPA on the eastern border.

In 2024, the total use count per mile was 20.4, which shows a return to the average total use count over all years and a decline from peak total use count of 38.2 that was observed in 2022. Part of this decrease in observed activity could also be due to the winter storms, which limited access to the beach at Naples MPA. Sandy beach recreation accounted for 44% of all observations followed by surfing, 25% of observations, and animals off leash on sandy substrate at 7% of all observations. There were 4 observations of potential violations at the Naples MPA including 2 counts of shore-based recreational hook and line fishing and 2 counts of off-shore boats line fishing.

### Kashtayit SMCA

During the January- December 2024 time period, Santa Barbara Channelkeeper Marine Protected Area (SB MPA) Watch volunteers and State Park volunteers conducted 59 surveys within the SMCA. In the first part of the year, there were limited surveys of the Kashtayit MPA as the Gaviota State Park beach, which one of the surveys falls into, was closed due to damage from winter storms. The road that accesses the beach in the western portion of the MPA was also closed for a period of time due to storm damage.

Overall, the total use rate at Kashtayit SMCA was 70.3 total use per mile surveyed for 2024, which is slightly higher than the average of previous years (60.5). Sandy beach recreation accounted for 78% of all observations, followed by offshore recreation at 8% of observations and then onshore hook and line fishing at 5% of observations. Kashtayit SMCA allows for the recreational take of most species except for mussels and scallops.

State Parks shared this update from their staff and volunteers conducting surveys at Kashtayit. The main user group identified in the MPA Watch Surveys are kayakers who are engaging in



hook and line fishing. These individuals are typically fishing for halibut as observed when they have landed on shore. Others have been in search of perch and the occasional lingcod has been reported. External reports of MPA violations have been reported (usually to CalTip); although, no MPA violations have been observed during the duration of the MPA Watch surveys. Historically, the main State Park violations observed are dogs off leash from day-use recreationists and from the campground. With the campground closed for the off-season, the park has not been as busy with user groups.

### **Santa Barbara County MPAs Boat-based Surveys** **January – December 2024**

In addition to the shore-based MPA Watch surveys, Santa Barbara Channelkeeper staff conducts offshore surveys from the Research Vessel *Channelkeeper* of Campus Point and Naples MPAs. Surveys are also conducted at control sites for two miles on the eastern and western areas adjacent to the Campus Point and Naples MPAs. Channelkeeper has conducted boat-based surveys of these two coastal MPAs since 2013.

During boat MPA Watch surveys, SBCK documents all consumptive and non-consumptive boating activity, as well as all fishing and other consumptive activities observed taking place on or in the water, as well as all onshore fishing and any other consumptive activity occurring in and around the MPA's, including control areas. Channelkeeper staff are present and conduct all surveys.

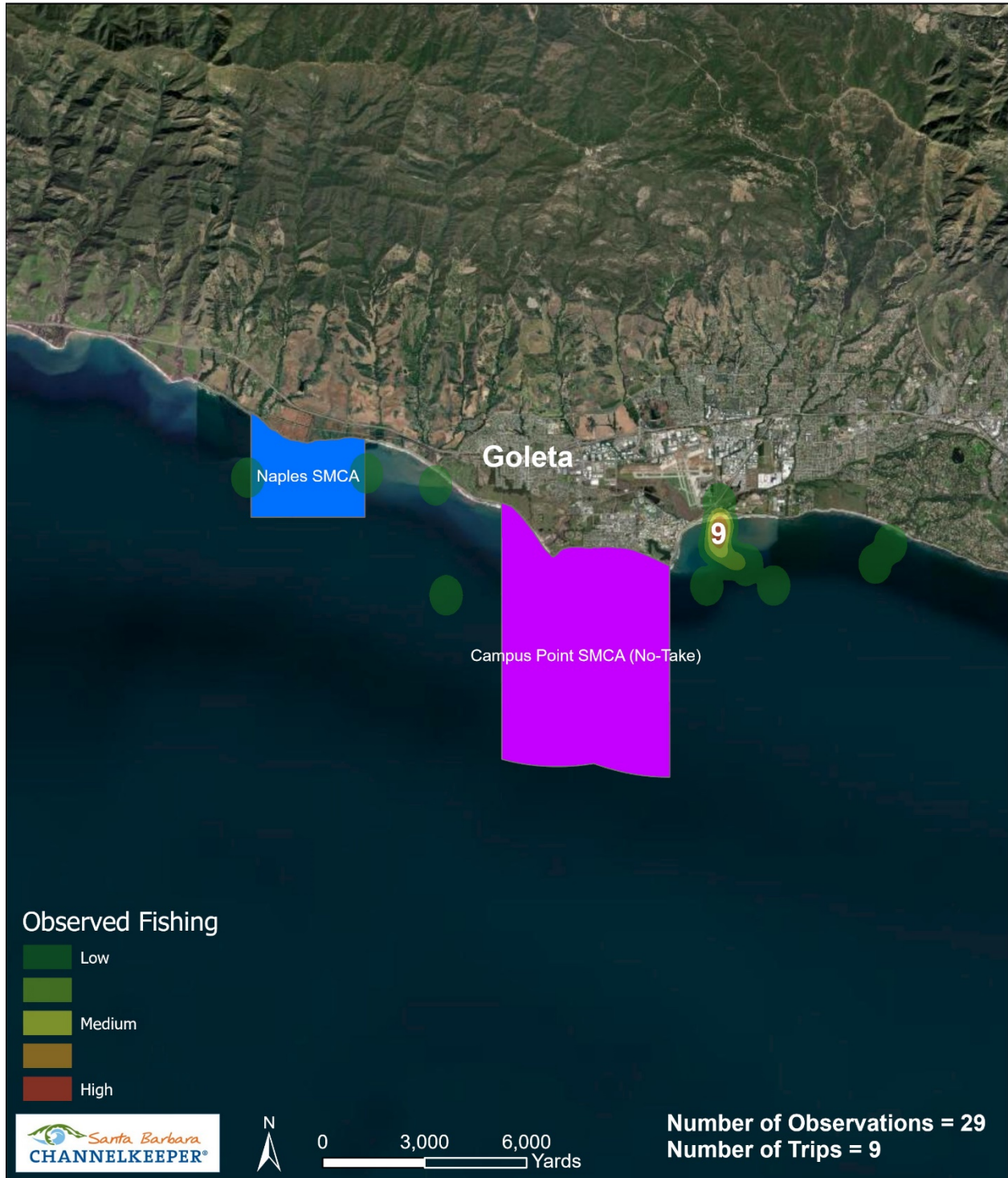
Channelkeeper completed 15 coastal boat MPA Watch surveys of Campus Point and Naples SMCAs during this past year. Due to regular boat maintenance and an engine repair that had the vessel out of the water for a period over the year, as well as winter storms and typical windy and foggy conditions in the spring and fall that resulted in numerous small craft advisories and gale warnings, fewer boat surveys were conducted than planned for during this time period.

There were no potential violations observed during the coastal boat-based surveys conducted during the January to December 2024 time period. Recreational hook and line fishing from the Goleta Pier and in the area to the south and east of the pier in the control survey is the most observed activity.

The following heat maps reflect fishing activity observed during Santa Barbara County coastal boat-based surveys for January to June and July to December 2024.



# Jan - Jun 2024 All Fishing Activity Santa Barbara





# Jul - Dec 2024 All Fishing Activity Santa Barbara



## POTENTIAL VIOLATIONS

In 2024, the rate of consumptive activities observed in Kashtayit, Naples, and Campus Point MPAs remained relatively low accounting for 0.89% of all observations recorded by shore-based surveys. In the Campus Point (No-Take) SMCA, shore-based MPA Watch volunteers observed ten potential violations of shore-based hook and line fishing activity in the MPA. Many of the observations of hook and line fishing from shore occurred in the western portion of the MPA by Ellwood Mesa. There were also 4 observations of hand collection of biota, which is similar to past years. In the Naples SMCA, shore-based volunteers observed two counts of hook and line fishing from shore and two counts of boat fishing by line. Both of these activities are prohibited in the Naples MPA.

Even if the noncompliance rate is low, it is important to note that any illegal take from MPAs jeopardizes the success of the MPA and health of the ecosystems which they protect.

## NEXT STEPS

Channelkeeper will continue to educate and train new MPA Watch volunteers to conduct shore-based surveys at the three coastal MPAs in southern Santa Barbara County. As conditions and weather permits, we will also conduct boat-based surveys of the coastal MPAs at Campus Point and Naples SMCAs and at MPAs in the Northern Channel Islands (Footprint SMR, Anacapa Island SMR and SMCA, and Scorpion SMR).

State Parks plans to continue to train hosts (who are interested) to conduct MPA Watch surveys at the Kashtayit SMCA.

## ADDITIONAL INFORMATION

For additional information on MPA Watch, including survey sites, participating organizations, protocols and datasheets, media kit, and how to get involved, please visit [mpawatch.org](https://mpawatch.org). Connect with MPA Watch on social media @MPAWatchOrg.

For additional information regarding MPAs and regulations specific to the various classifications of MPAs please visit [wildlife.ca.gov/MPAs](https://wildlife.ca.gov/MPAs). If you see an activity that violates MPA regulations, please call CalTIP to report the violation at (888) 334-2258.

For more information about the work Santa Barbara Channelkeeper does to protect and restore the Santa Barbara Channel and its watersheds, including to monitor and build support for local MPAs, please visit [sbck.org](https://sbck.org).